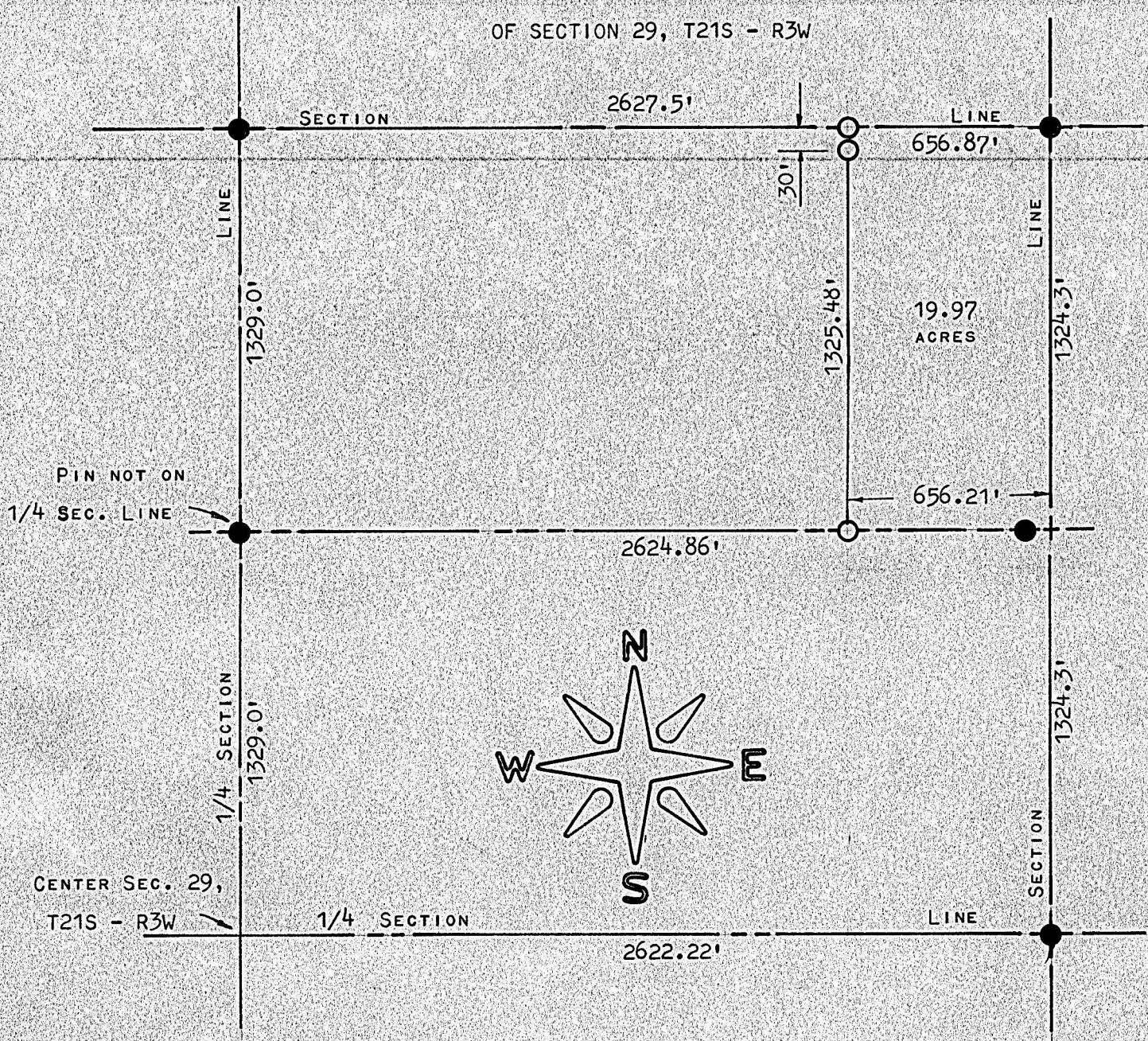


A SURVEY OF THE E1/2 OF THE NE1/4, NE1/4

OF SECTION 29, T21S - R3W



● PINS FOUND THIS SURVEY

○ PINS SET THIS SURVEY

STATE OF KANSAS)
COUNTY OF McPHERSON)

I, F. R. RANKIN, COUNTY ENGINEER OF McPHERSON COUNTY, KANSAS,
DO HEREBY CERTIFY THAT UNDER MY SUPERVISION A SURVEY WAS MADE OF
THE E1/2 OF THE NE1/4, NE1/4 OF SECTION 29, T21S - R3W OF THE 6TH
P. M. THE LAND DESCRIBED CONTAINS 19.97 ACRES MORE OR LESS AND
THE ACCOMPANYING PLAT IS A TRUE EXHIBIT OF SAID SURVEY AS FAR AS
IT IS KNOWN TO ME.

SURVEY CALLED FOR BY J. E. CHISHOLM.

Robert Gutsch-Troat

SIGNED ON THIS 25 DAY OF JANUARY, 1973.

F. R. Rankin
F. R. RANKIN
COUNTY ENGINEER
McPHERSON CO., KANSAS

