

This space for sketch or additional information
(attach additional sheets if necessary)



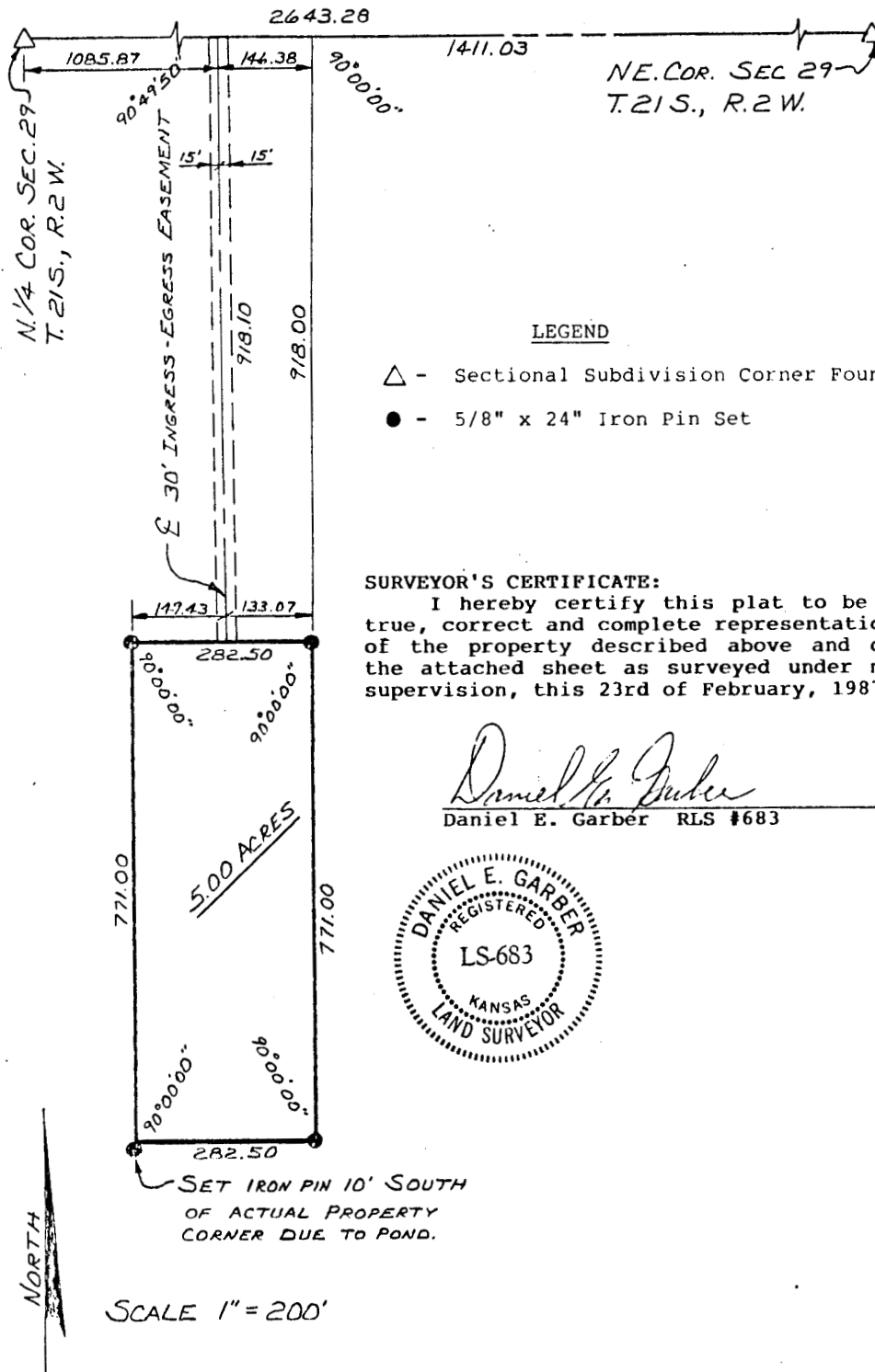
**Garber
Surveying Service, P.A.**

217 East 1st, Suite 16 Hutchinson, KS 67501

Proj. No. G87-101

SURVEY FOR: Ray Lichti

DESCRIPTION: A tract in the Northeast Quarter of Section 29, Town-
ship 21 South, Range 2 West of 6th Principal Meridian, McPherson County,
Kansas, as described on the attached sheet.



SURVEYOR'S CERTIFICATE

This is to certify that I, Daniel E. Garber, have found evidence of the corner hereon described and that the statements contained hereon correctly represent the evidence, corner, monuments and accessories for the corner.

Signed Daniel E. Garber

Date 3-18-87 Registration Number RLS #683

Return completed form and filing fee to:

JACK H. BRIER, Secretary of State, Second Floor, State Capitol, Topeka, KS 66612

