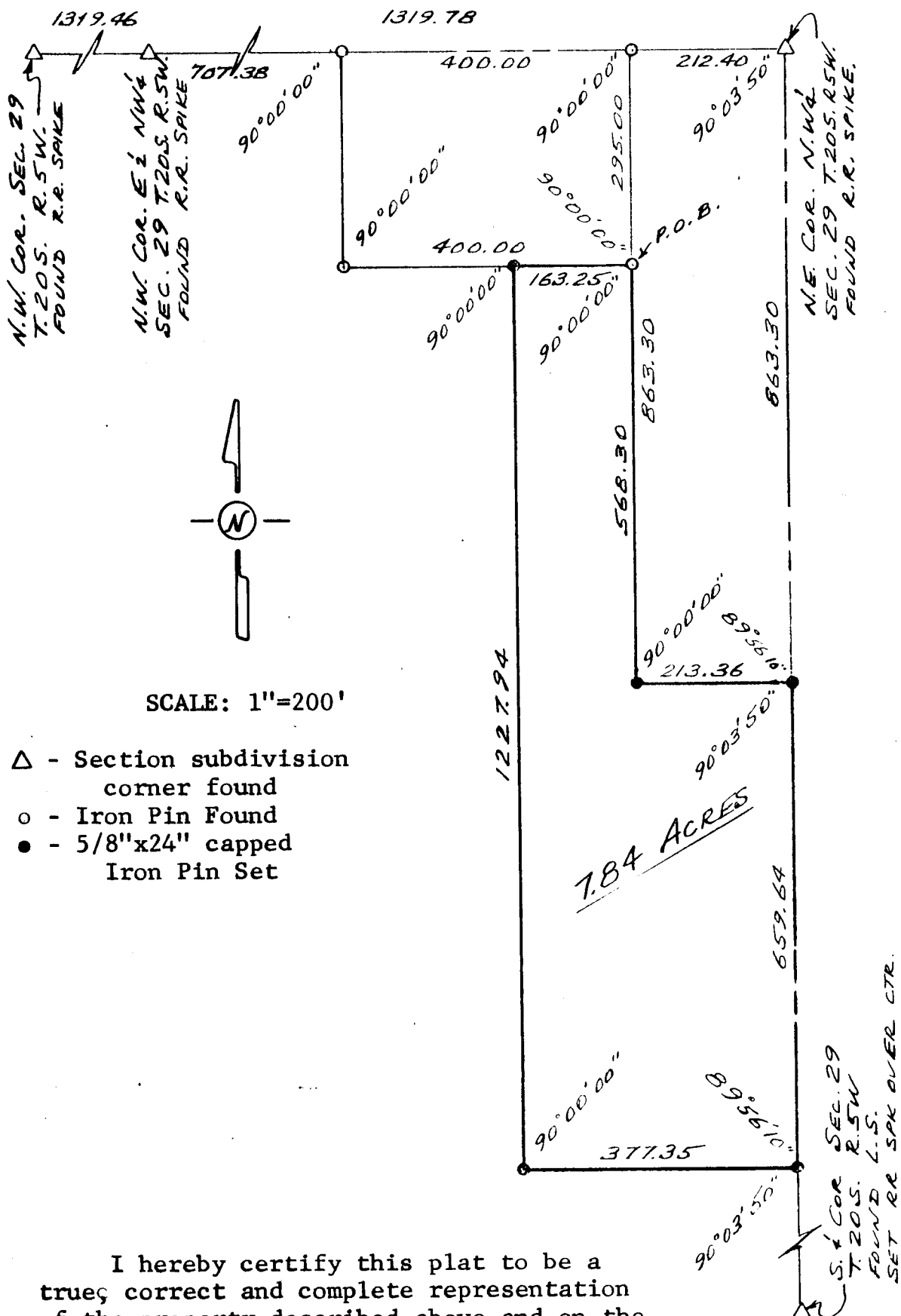


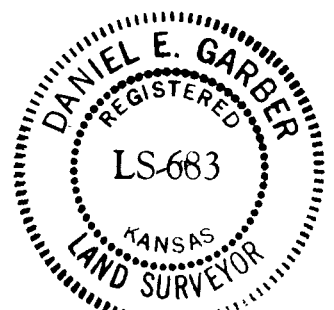
Survey for: Americana Realty Co.
 By: Garber Surveying Service, P.A.
 217 East First Avenue, Suite 9
 Hutchinson, Kansas 67501

DESCRIPTION: A tract in the N.W. $\frac{1}{4}$ of Section 29, T.20 S., R.5 W. of the 6th P.M. in McPherson County, Kansas as more particularly described on the attached sheet.



I hereby certify this plat to be a true, correct and complete representation of the property described above and on the attached sheet, as surveyed by me, this 7th day of January, 1981.

Daniel E. Garber
 Daniel E. Garber RLS



Proj. No. G80-169