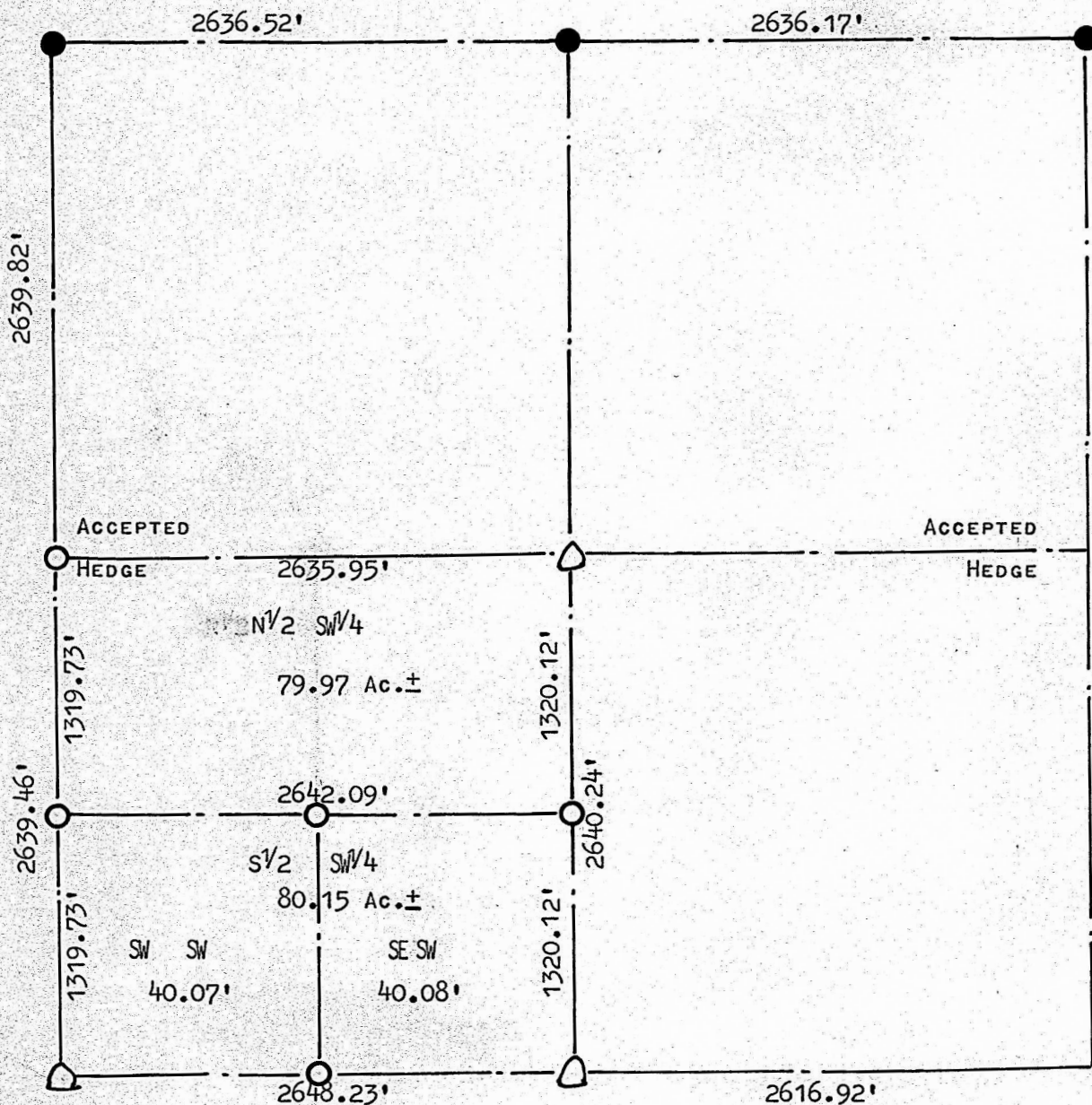


A SURVEY IN THE SW¹/₄
SECTION 29, T20S, R4W



- STONES FOUND
- PINS PREVIOUS SURVEY
- PINS SET THIS SURVEY

STATE OF KANSAS) SS
COUNTY OF McPHERSON)

I, FRANCIS D. WAGNER, COUNTY ENGINEER OF McPHERSON COUNTY, KANSAS, DO HEREBY CERTIFY THAT I DID CAUSE TO BE DONE ON THE 6TH DAY OF JULY, 1959 A SURVEY IN THE SW¹/₄ SECTION 29, T20S, R4W OF THE 6TH P.M. DESCRIBED AS FOLLOWS:

A SURVEY OF THE N¹/₂ SW¹/₄ SECTION 29, T20S, R4W CONTAINING 79.97 AC. MORE OR LESS AND A SURVEY OF THE S¹/₂ SW¹/₄ SECTION 29, T20S, R4W CONTAINING 80.15 ACRES MORE OR LESS.

MICROFILM

AND THAT THE ACCOMPANYING PLAT IS A TRUE EXHIBIT OF SAID SURVEY.

Francis D. Wagner

FRANCIS D. WAGNER
COUNTY ENGINEER
McPHERSON COUNTY

JULY 10, 1959