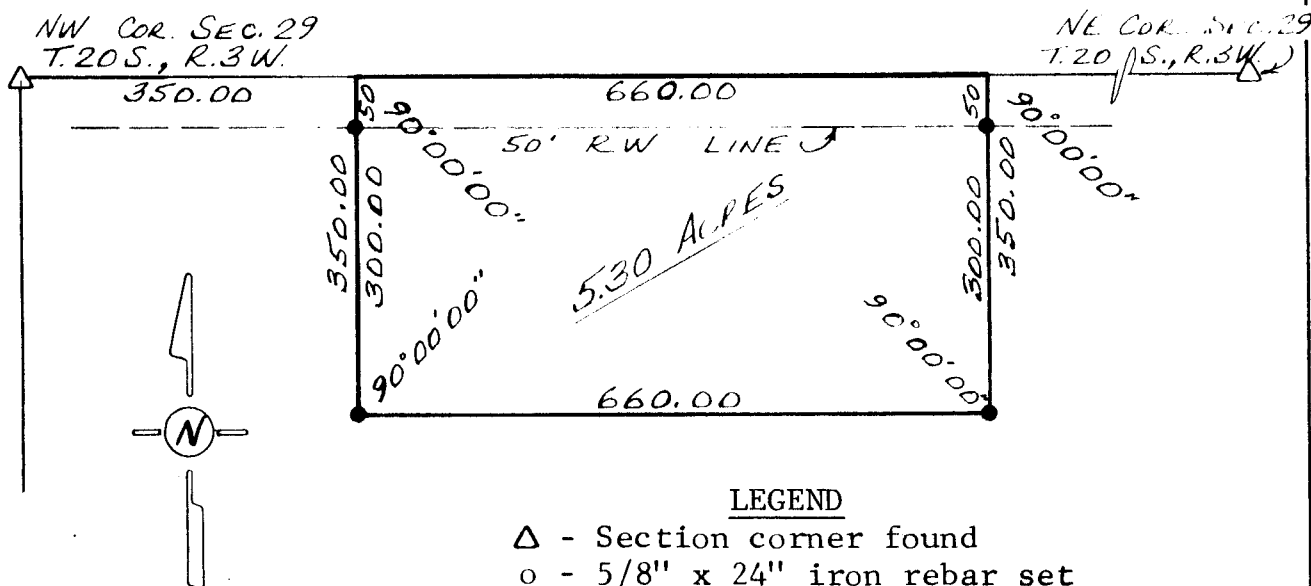


Survey for: Sunflower Realty
By: Garber Surveying Service, P.A.
217 East First Avenue, Suite 9
Hutchinson, Kansas 67501
Phone 316-665-7032



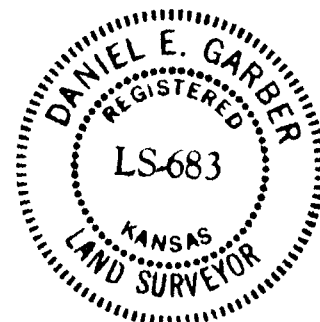
SCALE: 1"=200'

DESCRIPTION: Commencing at the Northwest corner of the NW $\frac{1}{4}$ of Section 29, T.20 S., R.3 W. of the 6th P.M.; thence East along the North line of said NW $\frac{1}{4}$ 350.00 ft. for a place of beginning; thence continuing East without deflection 660.00 ft.; thence with a deflection angle 90°00'00" right-South 350.00 ft.; thence with a deflection angle 90°00'00" right-West 660.00 ft.; thence with a deflection angle 90°00'00" right-North 350.00 ft. to the place of beginning containing 5.30 acres in McPherson County, Kansas subject to a road right-of-way easement across the North 50.00 ft. thereof and any other easements of record.

SURVEYOR'S CERTIFICATE:

I hereby certify this plat to be a true, correct and complete representation of the property described above, as surveyed by me, this 25th day of September, 1982.

Daniel E. Garber
Daniel E. Garber RLS



G82-121