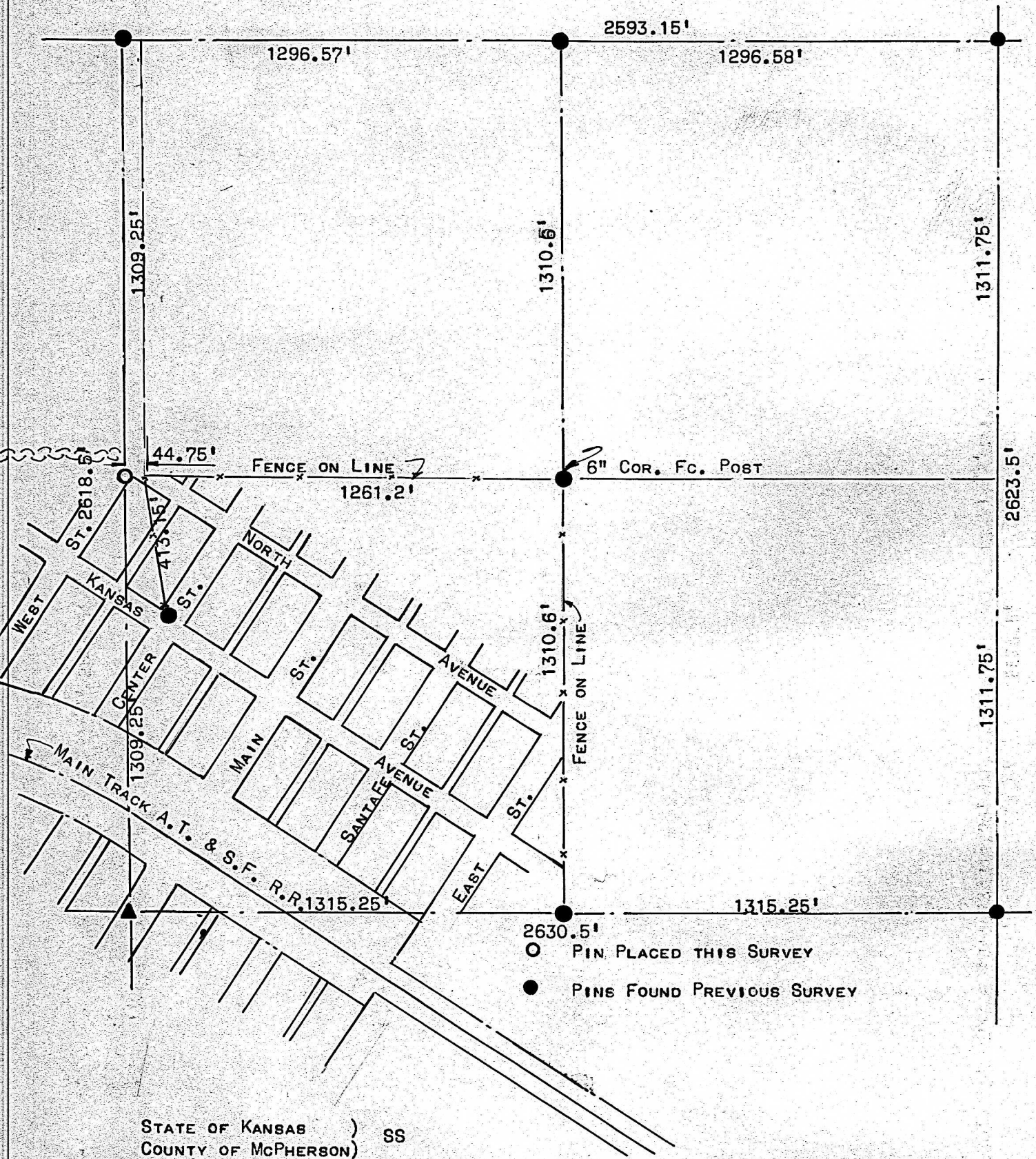


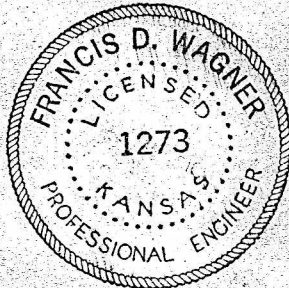
A SURVEY OF THE NW $\frac{1}{4}$ NE $\frac{1}{4}$
SECTION 29, T19S, R4W 6TH P.M.



STATE OF KANSAS)
COUNTY OF McPHERSON) SS

I FRANCIS D. WAGNER, COUNTY ENGINEER OF McPHERSON COUNTY, KANSAS DO HEREBY CERTIFY THAT I DID CAUSE TO BE DONE ON THE 31ST DAY OF MAY, 1958, A SURVEY IN THE NORTHWEST QUARTER, OF THE NORTHEAST QUARTER OF SECTION 29, TOWNSHIP 19 SOUTH, RANGE 4 WEST OF THE SIXTH PRINCIPAL MERIDIAN, AND THAT THE ACCOMPANYING PLAT IS A TRUE EXHIBIT OF SAID SURVEY.

2 JUNE, 1958



Francis D. Wagner
FRANCIS D. WAGNER
COUNTY ENGINEER
McPHERSON, COUNTY

MICROFILM