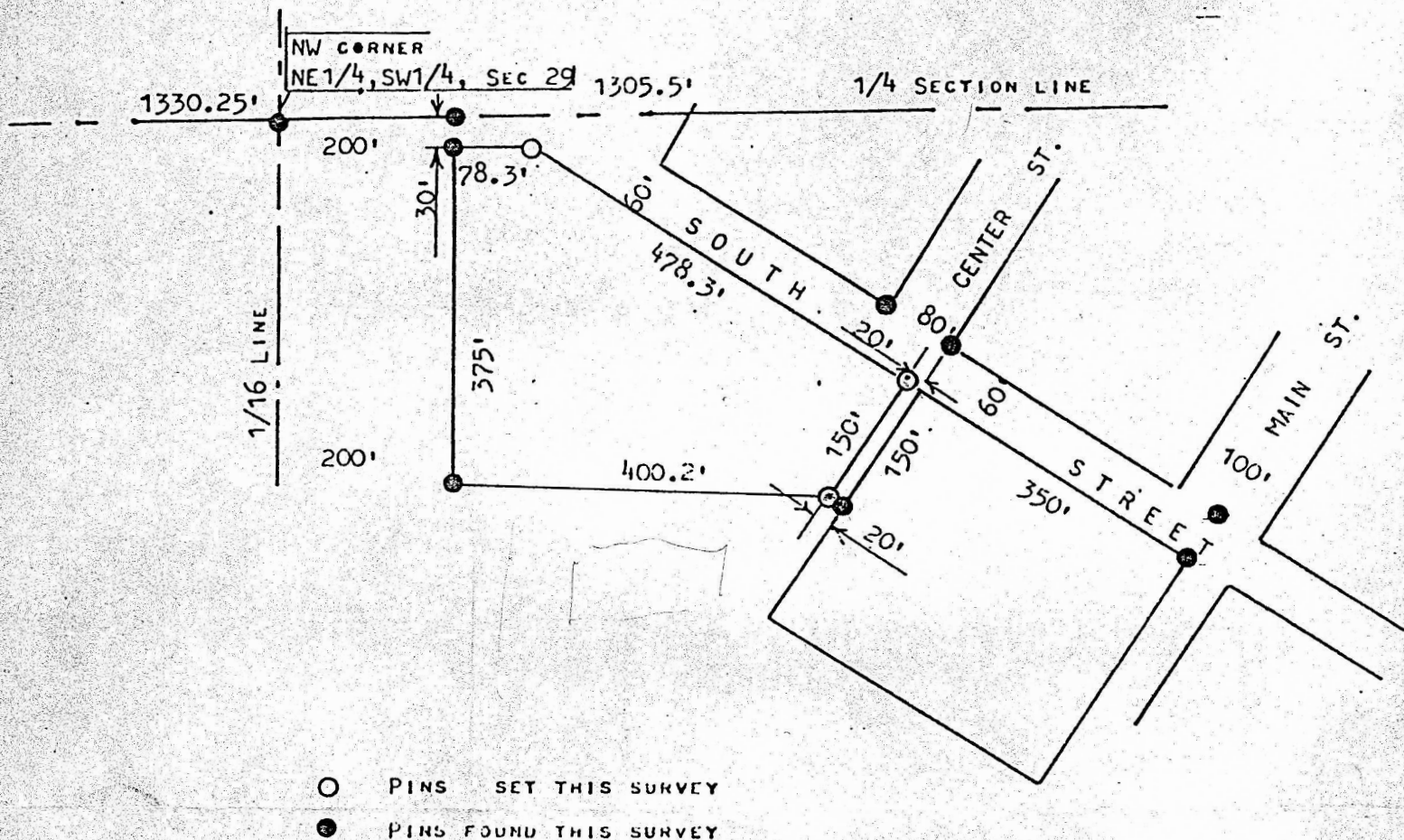


A SURVEY OF A TRACT OF LAND IN THE  
SW1/4, SECTION 29, T19S, R4W  
MCPHERSON COUNTY, KANSAS



STATE OF KANSAS )  
COUNTY OF MCPHERSON ) SS

I, MELVIN FERGUSON, PROFESSIONAL ENGINEER OF THE STATE OF KANSAS DO HEREBY CERTIFY THAT UNDER MY SUPERVISION A SURVEY WAS MADE IN THE SW1/4, SECTION 29, T19S, R4W OF THE 6TH P.M. AND DESCRIBED AS FOLLOWS;

COMMENCING AT THE NORTHWEST CORNER OF NE1/4, SW1/4 OF SAID SECTION 29, T19S, R4W; THENCE EAST 200 FEET, THENCE SOUTH 30 FEET FOR POINT OF BEGINNING, THENCE SOUTH PARALLEL WITH 1/16 LINE 375 FEET; THENCE EAST 400.2 FEET TO A POINT 20 FEET WEST OF THE WESTERLY LINE OF SCHOOL GROUNDS; THENCE NORTHEASTERLY 150 FEET PARALLEL TO AND 20 FEET FROM THE WESTERLY LINE OF SAID SCHOOL GROUNDS TO THE SOUTH LINE OF SOUTH STREET, CONWAY, KANSAS; THENCE IN A NORTHWESTERLY DIRECTION ALONG THE SOUTH SIDE OF SOUTH STREET, CONWAY KANSAS 478.3 FEET; THENCE WEST PARALLEL WITH 1/4 SECTION LINE 78.3 FEET AND TO THE PLACE OF BEGINNING, SAID TRACT OF LAND CONTAINS 2.89 ACRES MORE OR LESS AND THAT THE ABOVE PLAT IS A TRUE EXHIBIT OF SAID SURVEY AS FAR AS IT IS KNOWN TO ME.

SURVEY CALLED FOR BY GORDON E. HOPPE

SIGNED THIS 22<sup>nd</sup> DAY OF OCTOBER, 1976

Melvin Ferguson  
MELVIN FERGUSON  
PROFESSIONAL ENGINEER  
MCPHERSON, KANSAS

