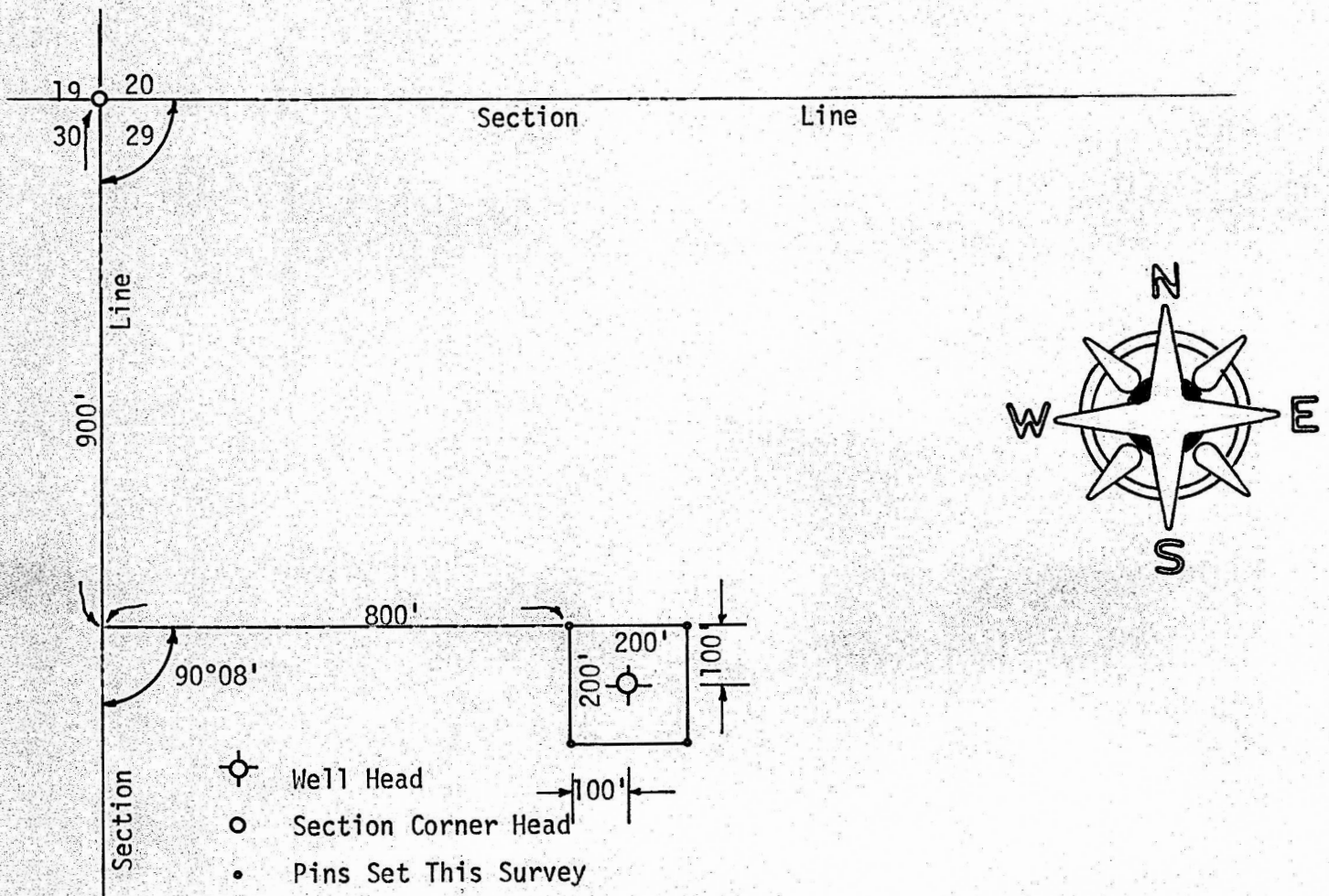


SURVEY NW 1/4 SECTION 29, T19S, R4W
MC PHERSON, KANSAS



State of Kansas)
County of McPherson) SS

I, F. R. Rankin, County Engineer of McPherson County, Kansas, do hereby certify that under my supervision a survey was made of a tract of land in the NW 1/4 Section 29, T19S, R4W of the 6th P.M. and described as follows: Commencing at the NW corner of said NW 1/4; thence South 900 feet; thence East parallel with the North line of said NW 1/4 800 feet to a point of beginning; thence South 200 feet; thence East 200 feet; thence North 200 feet; thence West 200 feet to the point of beginning. The land herein described contains 0.92 acres and the above plat is a true exhibit of said survey as far as it is known to me.

Survey requested by Francis Melland

Signed this 7 day of December, 1973

F. R. Rankin
F. R. Rankin, P. E.
Administrator of P.W. & Co. Engr.
McPherson, Kansas

