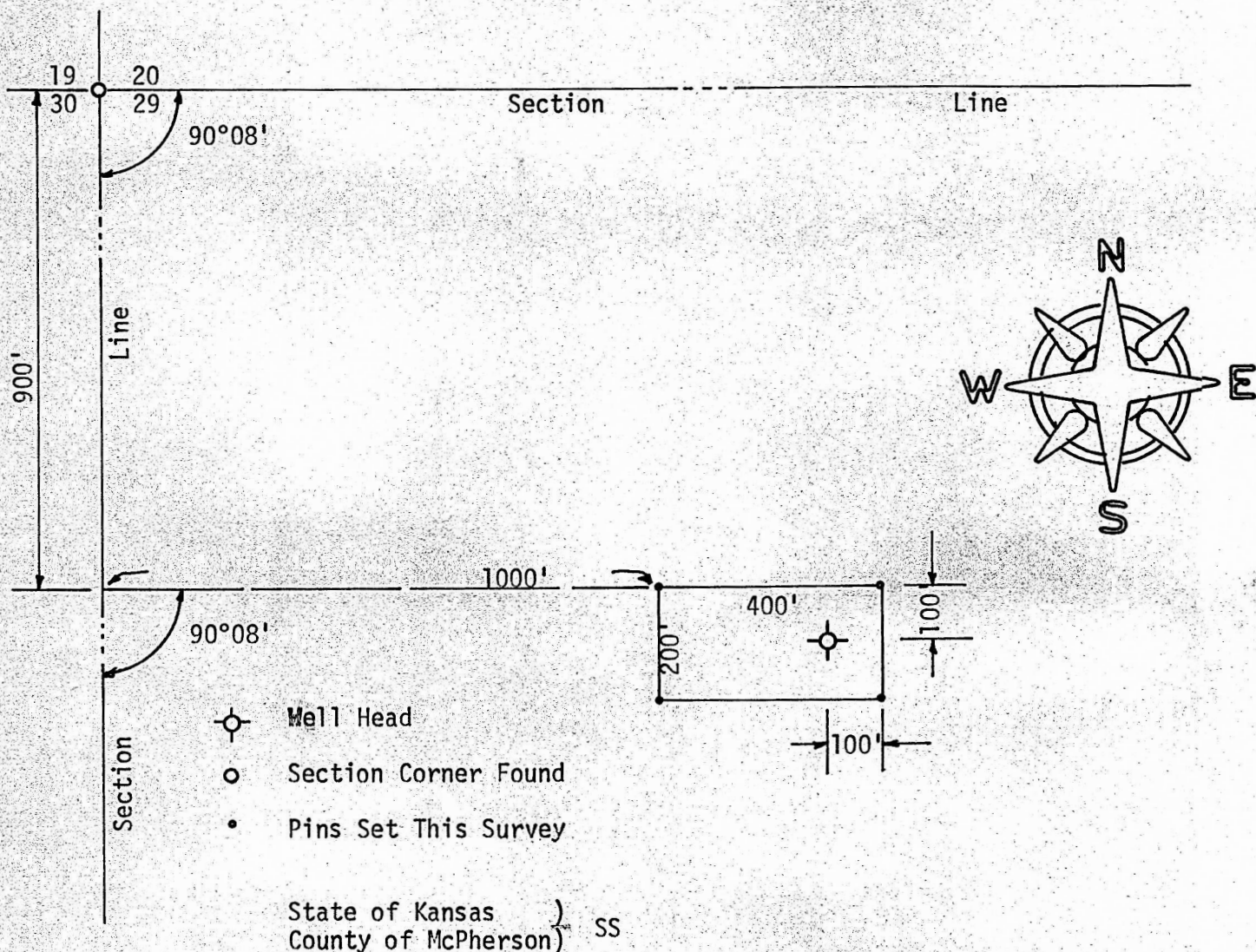


SURVEY NW 1/4 SECTION 29, T19S, R4W
MC PHERSON, KANSAS



I, F. R. Rankin, County Engineer of McPherson County, Kansas, do hereby certify that under my supervision a survey was made in the NW 1/4 Section 29, T19S, R4W of the 6th P.M. and described as follows:

Commencing at the NW corner of said NW 1/4; thence South 900 feet; thence East parallel with the North line of said NW 1/4 1000 feet to a point of beginning; thence South 200 feet; thence East 400 feet; thence North 200 feet; thence West 400 feet to the place of beginning. The land herein described contains 1.84 acres and the above plat is a true exhibit of said survey as far as it is known to me.

Survey requested by Francis Melland

Signed this 3rd day December 1973

F. R. Rankin, P. E.
Administrator of P.W. & County Engineer
McPherson, Kansas

