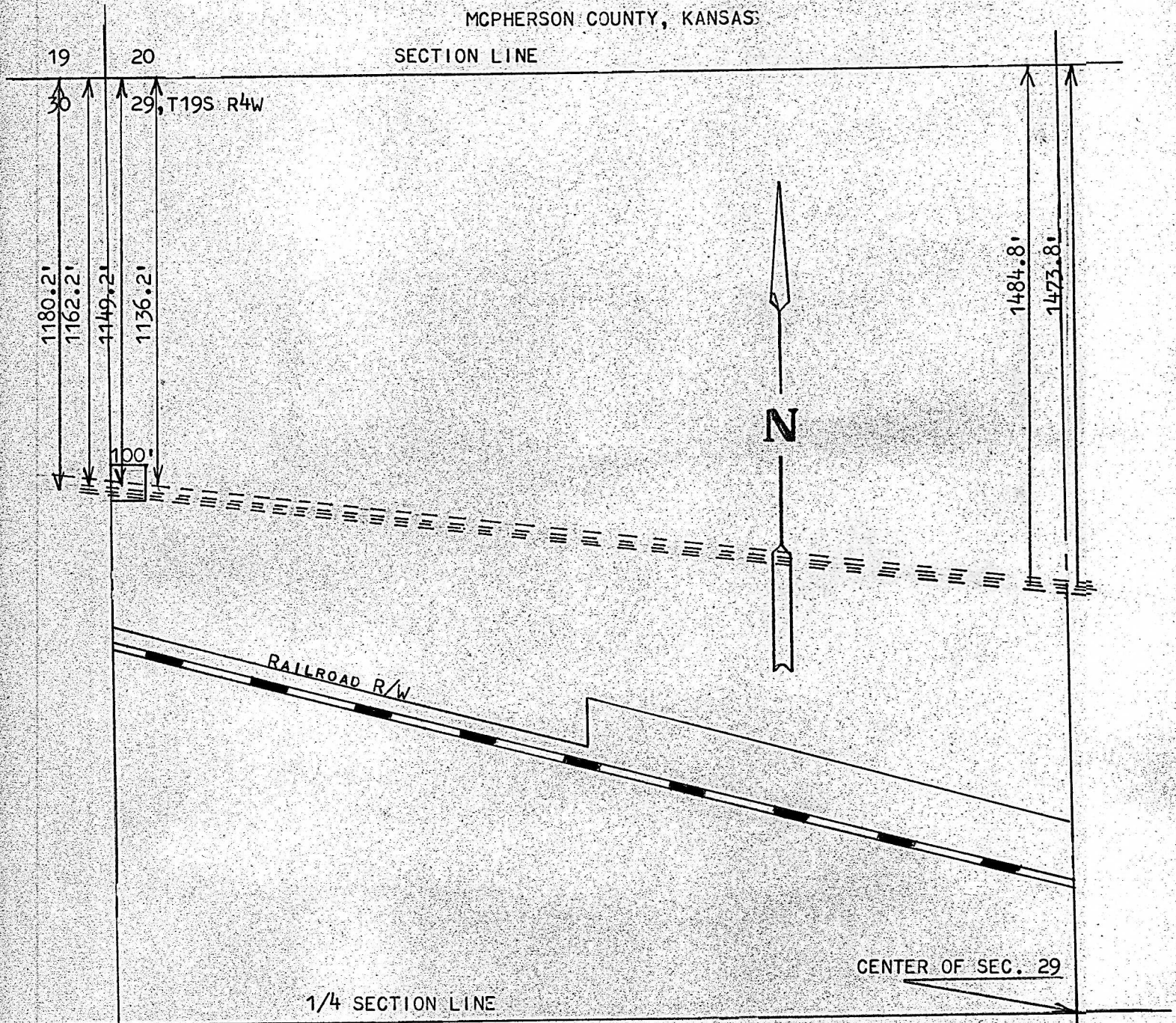


A SURVEY TO DETERMINE THE LOCATION OF
MID AMERICA PIPELINES IN THE NW1/4,
SECTION 29, T19S-R4W OF THE 6TH P.M.
MCIPHERSON COUNTY, KANSAS



MCIPHERSON COUNTY, KANSAS

FRANCIS RANKIN PROFESSIONAL ENGINEER

LOCATIONS OF PIPE LINES IN THE NW1/4,
SECTION 29, T19S-R4W

MARCH 28, 1970