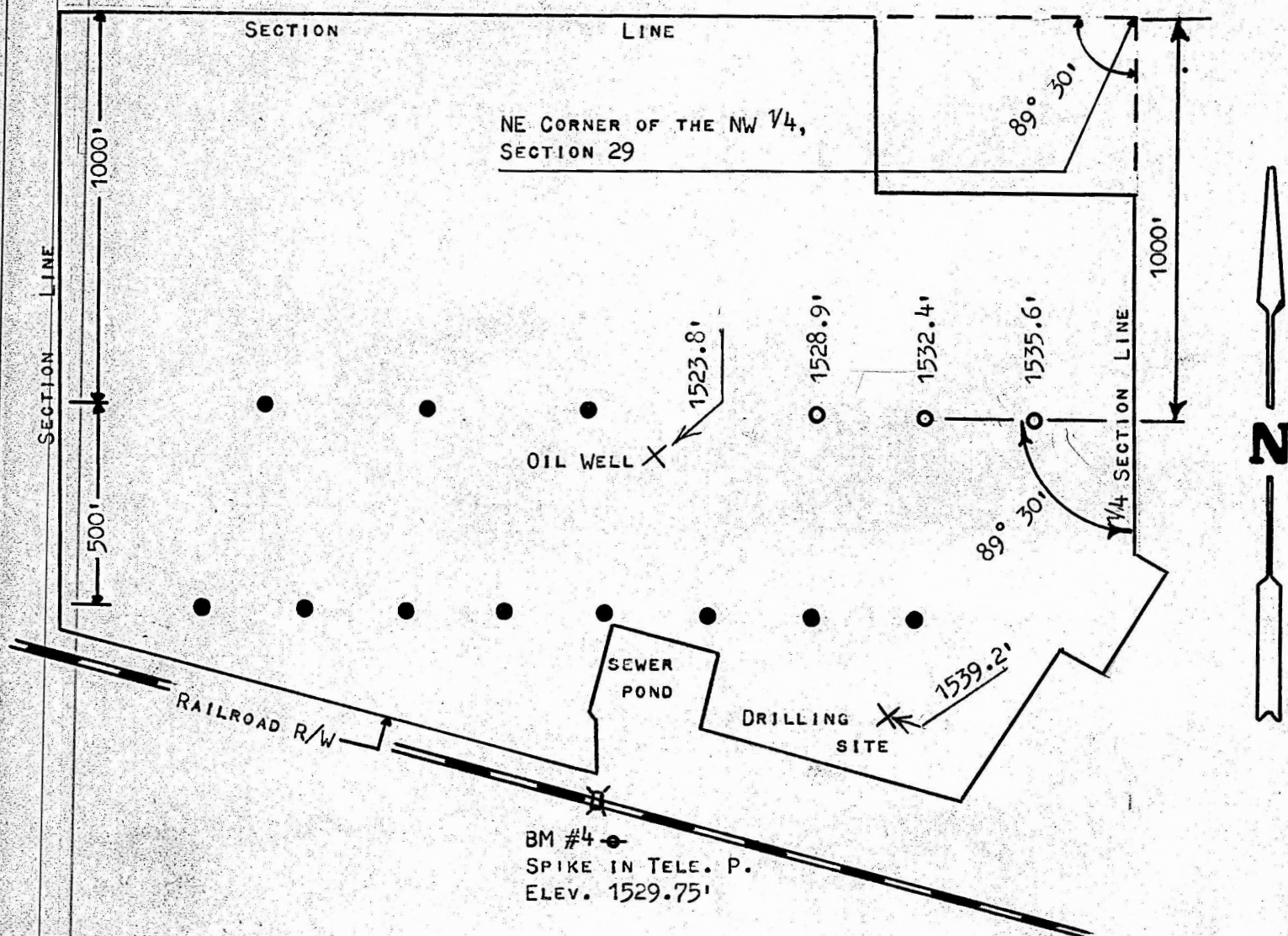


SURVEY OF STORAGE WELL LOCATIONS IN THE  
NW 1/4, SECTION 29, T19S, R4W,  
MCIPHERSON COUNTY, KANSAS



- EXISTING WELLS
- NEW WELLS

STATE OF KANSAS )  
COUNTY OF MCIPHERSON ) SS

I, FRANCIS RANKIN, COUNTY ENGINEER OF MCIPHERSON COUNTY, KANSAS, DO  
HEREBY CERTIFY THAT UNDER MY SUPERVISION A SURVEY OF WELL LOCATIONS AND  
ELEVATIONS WAS MADE IN THE NW 1/4 OF SECTION 29, T19S, R3W OF THE 6TH P.M.  
AND THAT THE ABOVE PLAT IS A TRUE EXHIBIT OF SAID SURVEY AS FAR AS IT IS  
KNOWN TO ME.

SURVEY CALLED FOR BY MELLON.

SIGNED THIS 18 DAY OF JUNE, 1973.



*F. R. Rankin P.E.*  
F. R. RANKIN  
COUNTY ENGINEER  
MCIPHERSON COUNTY, KANSAS