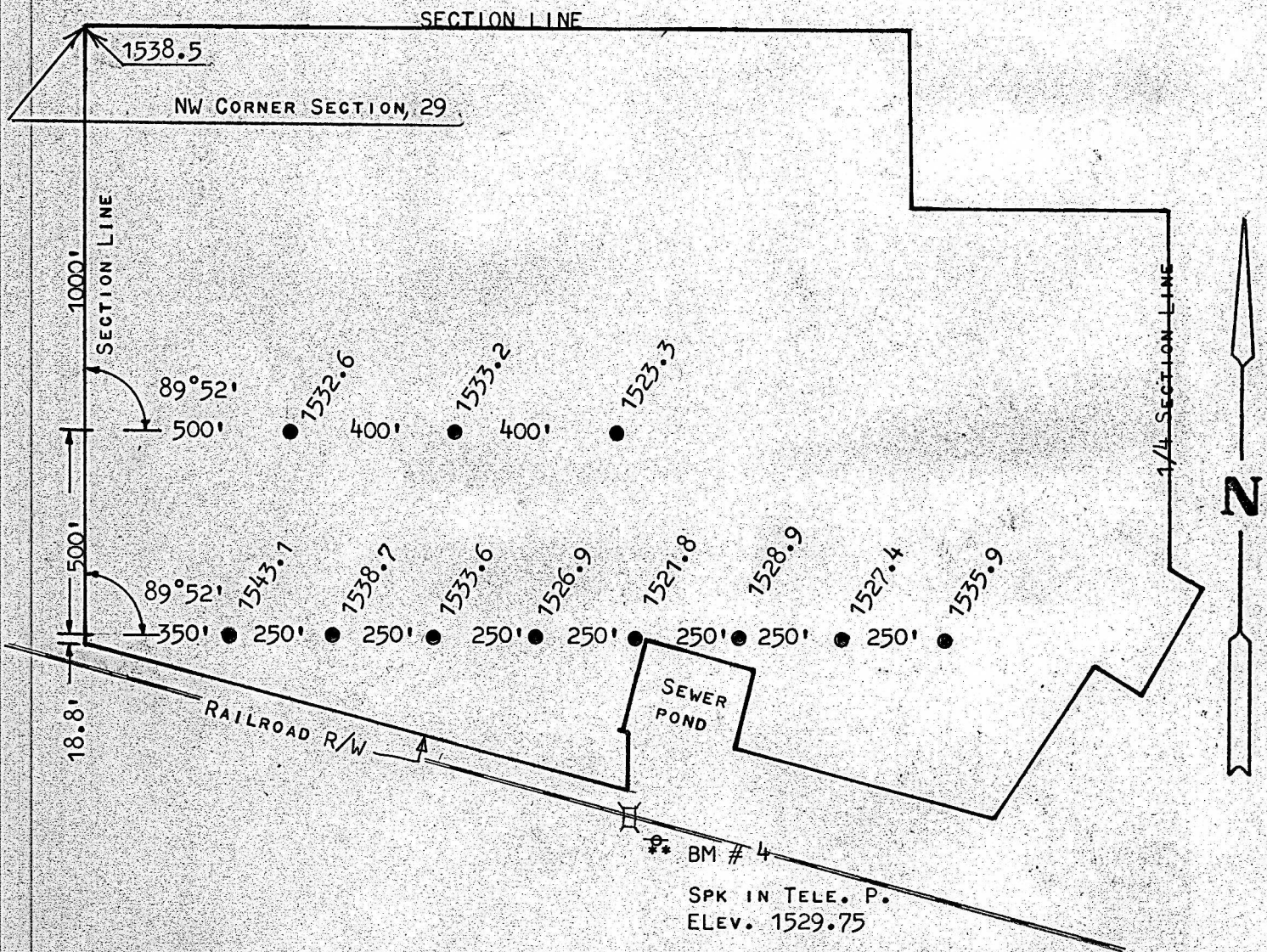


SURVEY OF STORAGE WELLS LOCATIONS IN THE
NW 1/4, SECTION 29, T19S - R4W OF THE 6TH P.M.
MCIPHERSON, KANSAS



STATE OF KANSAS)
COUNTY OF MCIPHERSON) SS

I, FRANCIS RANKIN, COUNTY ENGINEER OF MCIPHERSON COUNTY, KANSAS, DO HEREBY CERTIFY THAT UNDER MY SUPERVISION A SURVEY OF WELL LOCATIONS AND ELEVATIONS WAS MADE IN THE NW 1/4 OF SECTION 29, T19S - R4W OF THE 6TH P.M. AND THAT THE ABOVE PLAT IS A TRUE EXHIBIT OF SAID SURVEY AS FAR AS IT IS KNOWN TO ME

SURVEY CALLED FOR BY MELLON

SIGNED OF THIS 5 DAY OF FEBRUARY, 1970

Francis Rankin

FRANCIS RANKIN
COUNTY ENGINEER
MCIPHERSON, KANSAS

