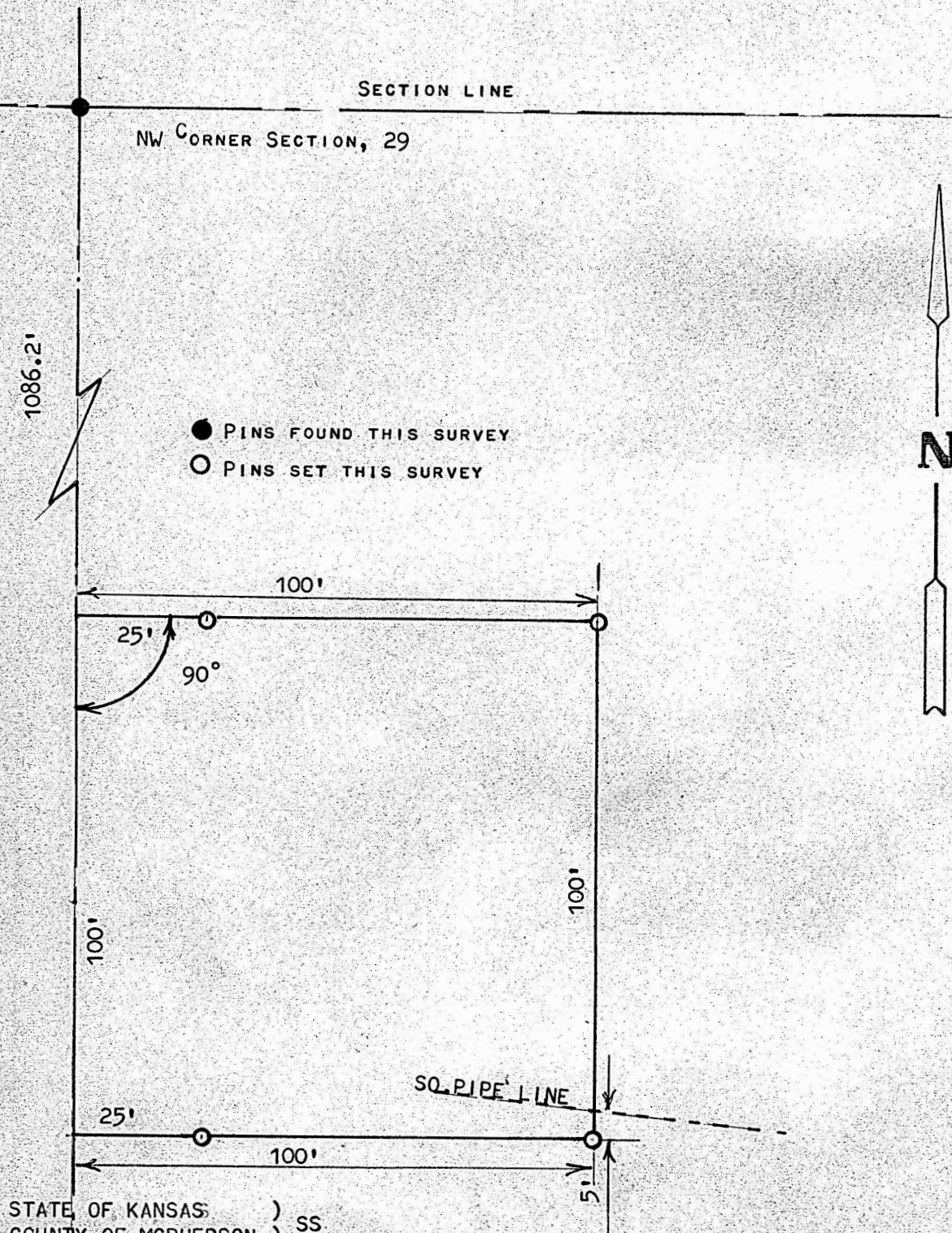


A SURVEY OF A TRACT OF LAND IN THE
NW 1/4, SECTION 29, T19S-R4W
MCPHERSON, KANSAS



STATE OF KANSAS)
COUNTY OF MCPHERSON) SS

I, FRANCIS RANKIN, PROFESSIONAL ENGINEER OF THE STATE OF KANSAS DO
HEREBY CERTIFY THAT UNDER MY SUPERVISION A SURVEY WAS MADE IN THE
NW 1/4, SECTION 29, T19S-R4W OF THE 6TH P.M. AND DESCRIBED AS FOLLOWS;

BEGINNING 1086.2 FEET SOUTH OF THE NW CORNER OF SAID SECTION 29, T19S
R4W; THENCE RIGHT ANGLE EAST 100.0 FEET; THENCE SOUTH PARALLEL WITH
SECTION LINE 100.0 FEET; THENCE WEST TO SECTION LINE 100.0 FEET;
THENCE NORTH 100.0 FEET, TO PLACE OF BEGINNING, SAID TRACT OF LAND
CONTAINS 0.25 ACRES MORE OR LESS, AND THAT THE ACCOMPANYING PLAT
IS A TRUE EXHIBIT OF SAID SURVEY AS FAR AS IT IS KNOWN TO ME.

SURVEY CALLED FOR BY MID AMERICA PIPE LINE

SIGNED THIS 24 DAY OF FEBRUARY, 1970

Francis Rankin
FRANCIS RANKIN
PROFESSIONAL ENGINEER
MCPHERSON, KANSAS

799
KANSAS
PROFESSIONAL ENGINEER

MICROFILM