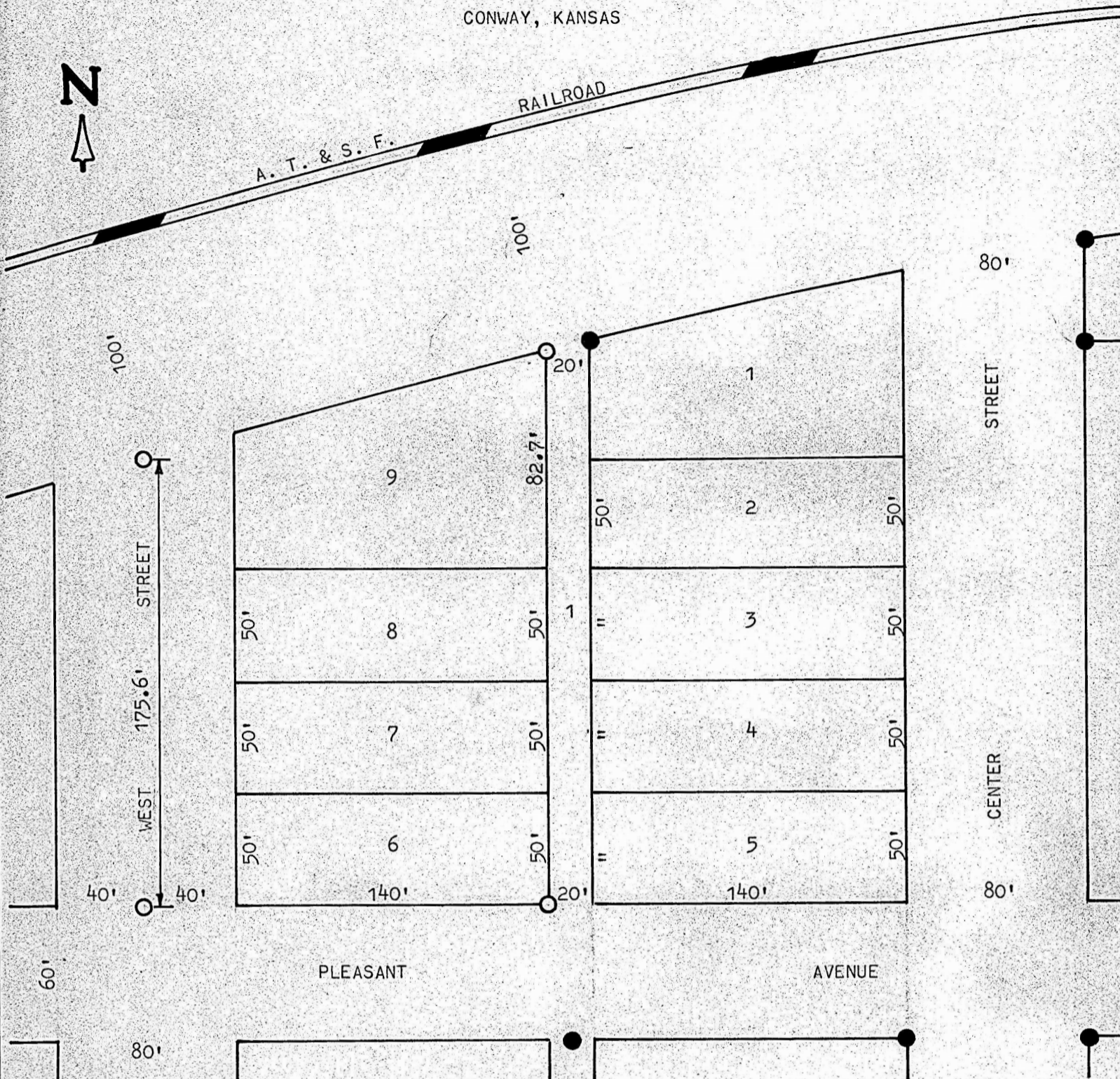


A SURVEY OF LOTS 6, 7, 8, & 9
OF BLOCK ONE
CONWAY, KANSAS



- PINS FOUND THIS SURVEY
- PINS SET THIS SURVEY

STATE OF KANSAS)
COUNTY OF McPHERSON) SS

I, FRANCIS RANKIN, COUNTY ENGINEER OF McPHERSON COUNTY, KANSAS, DO HEREBY CERTIFY THAT UNDER MY SUPERVISION A SURVEY WAS MADE OF LOTS 6, 7, 8, & 9 OF BLOCK ONE CONWAY, KANSAS, AND THAT THE ABOVE PLAT IS A TRUE EXHIBIT OF SAID SURVEY AS FAR AS IT IS KNOWN TO ME.

SURVEY CALLED FOR BY ALVIN JOHNSON

SIGNED THIS 8 DAY OF MAY, 1969.

Francis R. Rankin
FRANCIS R. RANKIN
COUNTY ENGINEER
McPHERSON, KANSAS



MICROFILM