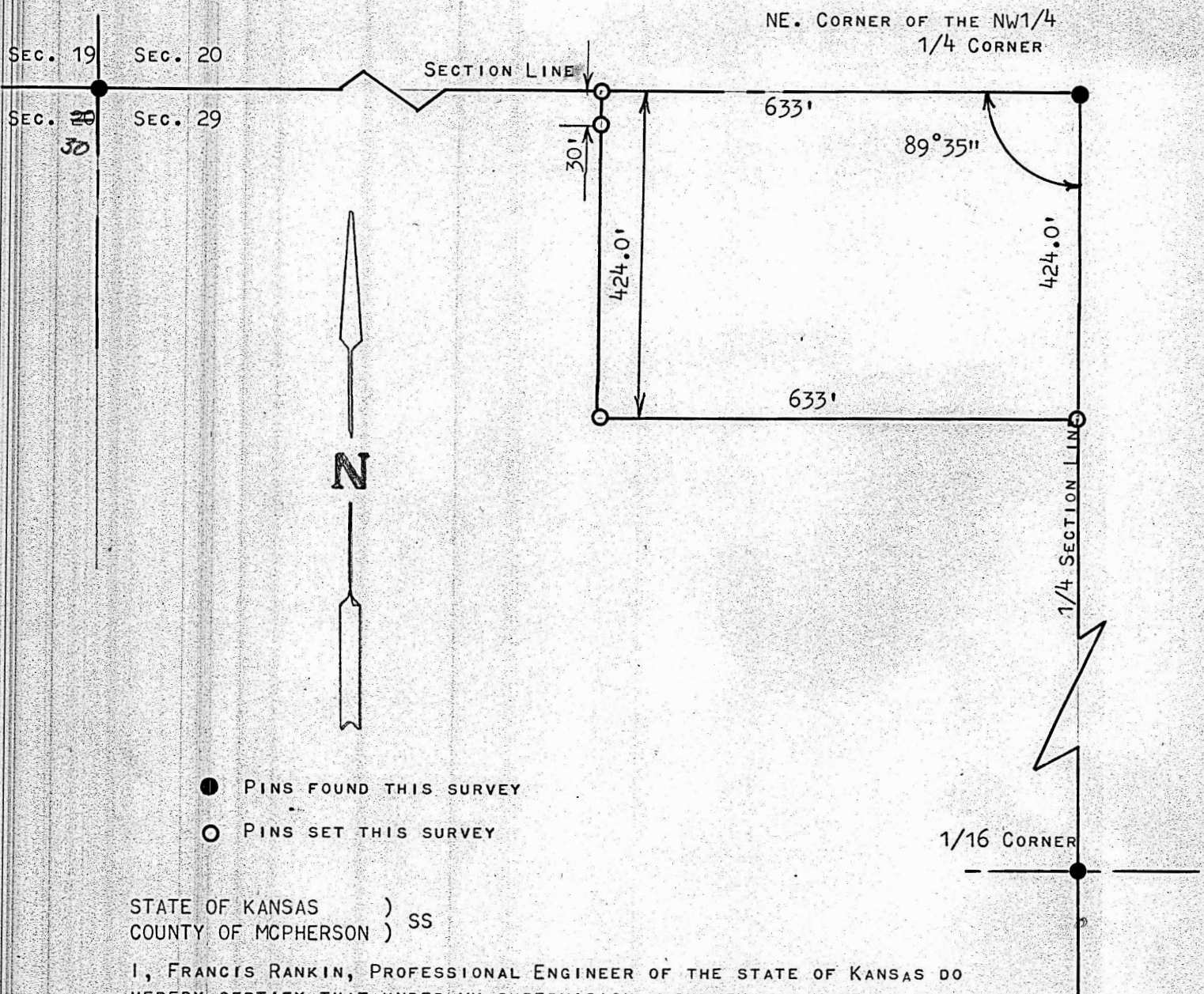


A SURVEY IN THE NW1/4, SECTION 29, T19S, R4W  
MCPHERSON COUNTY, KANSAS



STATE OF KANSAS )  
COUNTY OF MCPHERSON ) SS

I, FRANCIS RANKIN, PROFESSIONAL ENGINEER OF THE STATE OF KANSAS DO  
HEREBY CERTIFY THAT UNDER MY SUPERVISION A SURVEY WAS MADE IN THE  
NW1/4, SECTION 29, T19S-R4W OF THE 6TH. P.M. AND DESCRIBED AS FOLLOWS:

BEGINNING AT THE NE. CORNER OF THE NW1/4, OF SAID SECTION 29, T19S-R4W;  
THENCE WEST ON SECTION LINE 633.0 FEET; THENCE SOUTH PARALLEL WITH EAST  
1/4 SECTION LINE 424.0 FEET; THENCE EAST PARALLEL WITH SECTION LINE  
AND TO 1/4 SECTION LINE 633.0 FEET; THENCE NORTH ON SECTION LINE 424.0  
FEET TO PLACE OF BEGINNING, SAID TRACT OF LAND CONTAINS 6.2 ACRES MORE  
OR LESS, AND THAT THE ACCOMPANYING PLAT IS A TRUE EXHIBIT OF SAID SURVEY  
AS FAR AS IT IS KNOWN TO ME.

SURVEY CALLED FOR BY WAYNE KILLION

SIGNED THIS 14 DAY OF OCTOBER, 1968

*Francis Rankin*  
FRANCIS RANKIN  
PROFESSIONAL ENGINEER  
MCPHERSON, KANSAS

