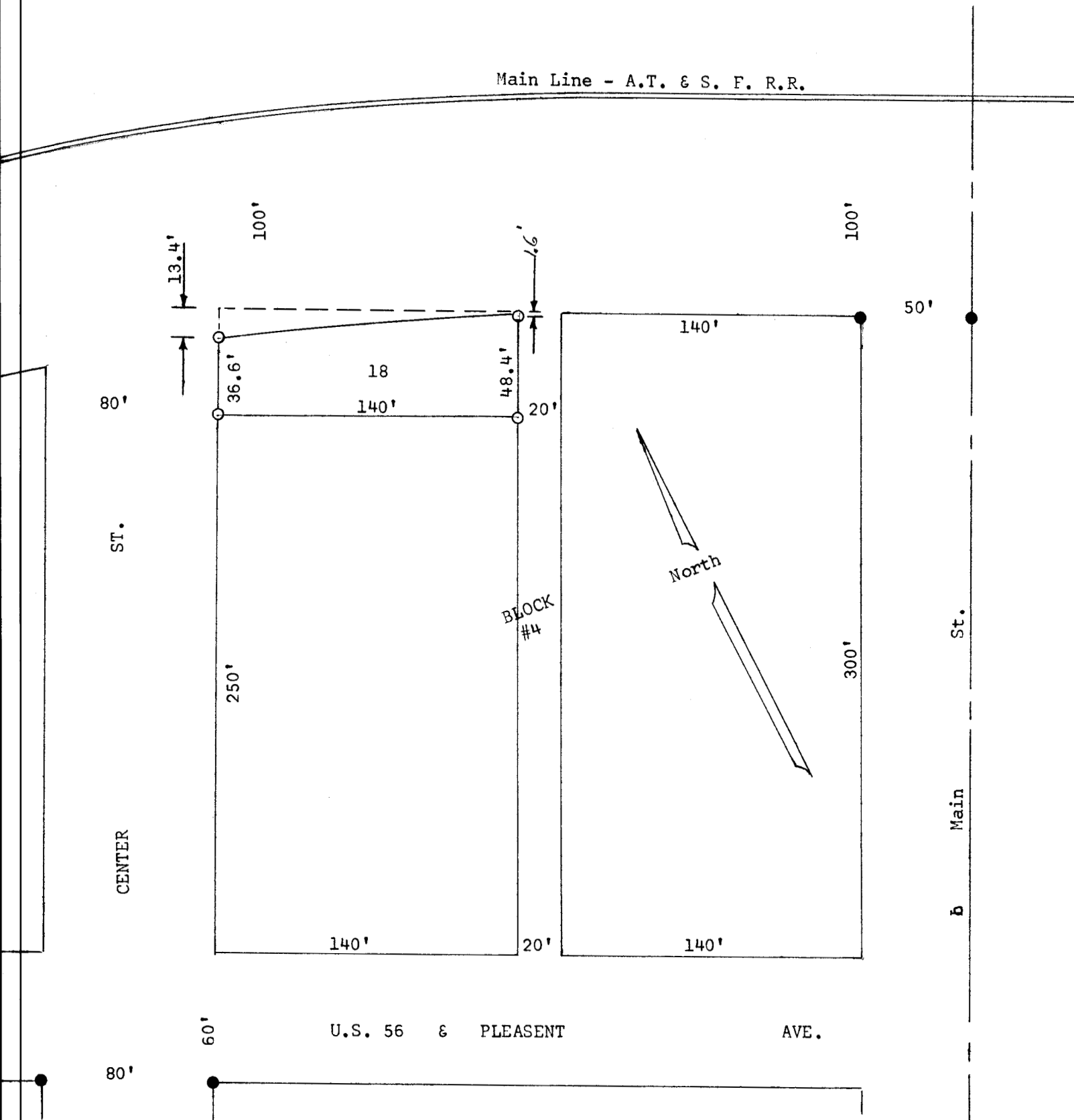


SURVEY LOT 18, BLOCK 4  
CONWAY, KANSAS



- Pins Set Previous Survey
- Pins Set This Survey

State of Kansas )  
County of McPherson) SS

I, Francis Rankin, County Engineer of McPherson, Kansas, do hereby certify that under my supervision a survey was made of Lot 18, Block 4, Conway, Kansas and the above plat is a true exhibit of said survey as far as it is known to me.  
Survey called for by Edward Geiman  
Signed this 28 day of October, 1966

F. R. Rankin  
County Engineer  
McPherson, Kansas

