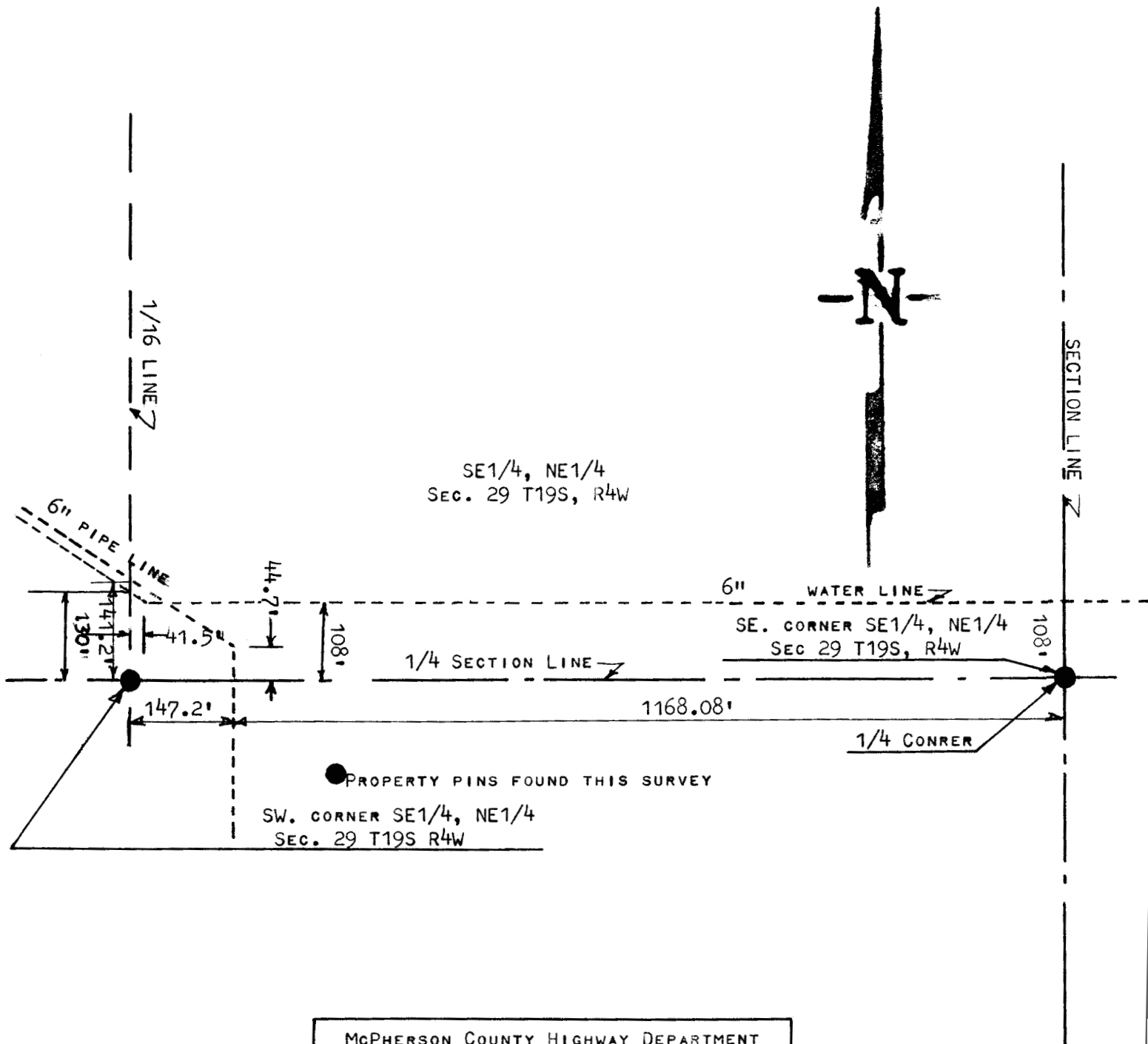


A SURVEY IN THE SE 1/4, NE1/4
SECTION 29, T19S, R4W, 6TH P.M.



MCPHERSON COUNTY HIGHWAY DEPARTMENT	
FRANCIS R. RANKIN	ENGINEER
A SURVEY OF A 6" PIPE LINE LOCATION IN SEC. 29 T19S R4W 6TH P.M.	
JUNE 8, 1963	<i>Francis Rankin</i>

