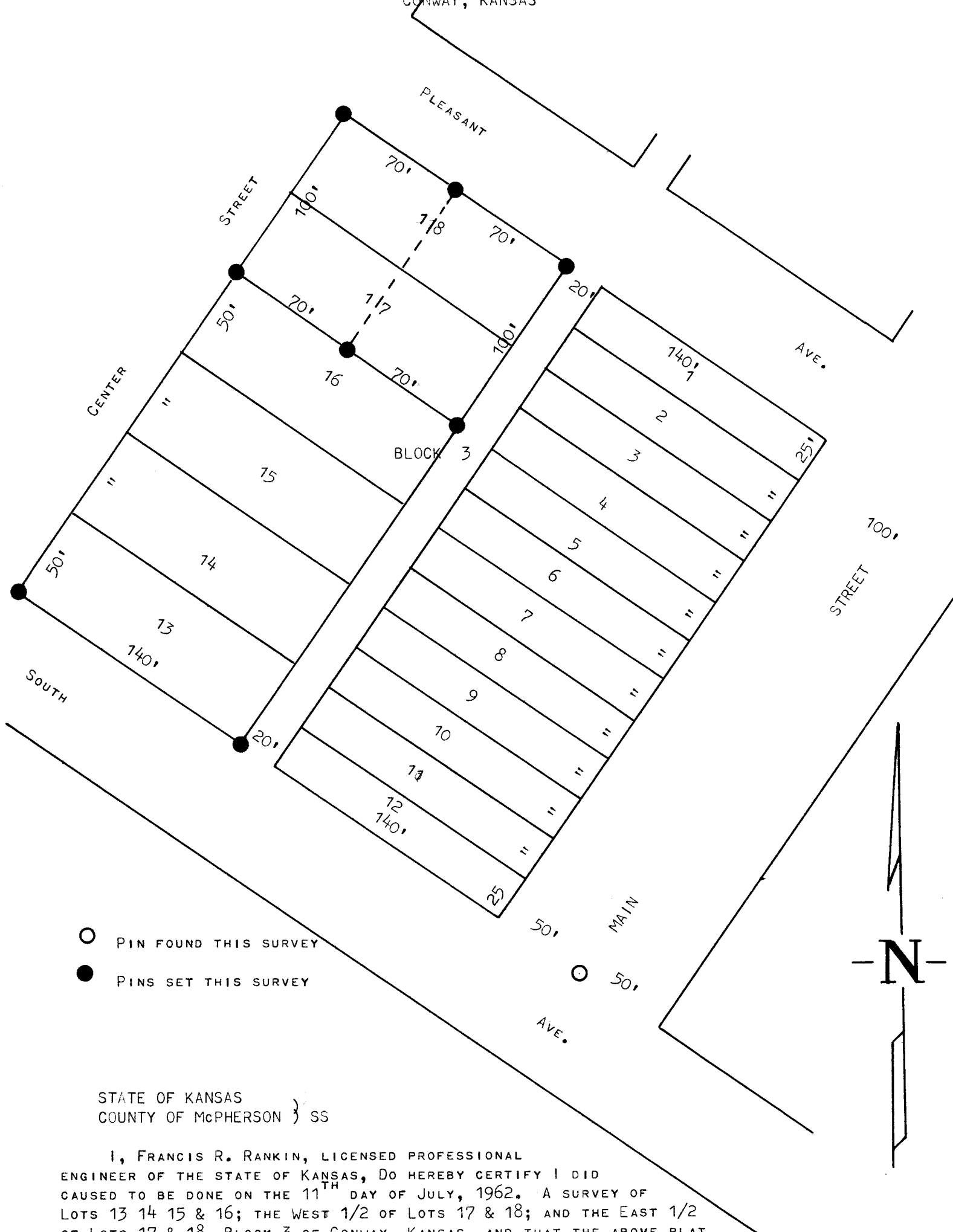


A SURVEY IN BLOCK 3
CONWAY, KANSAS



- PIN FOUND THIS SURVEY
- PINS SET THIS SURVEY

STATE OF KANSAS
COUNTY OF McPHERSON } SS

I, FRANCIS R. RANKIN, LICENSED PROFESSIONAL ENGINEER OF THE STATE OF KANSAS, DO HEREBY CERTIFY I DID CAUSED TO BE DONE ON THE 11TH DAY OF JULY, 1962. A SURVEY OF LOTS 13 14 15 & 16; THE WEST 1/2 OF LOTS 17 & 18; AND THE EAST 1/2 OF LOTS 17 & 18, BLOCK 3 OF CONWAY, KANSAS, AND THAT THE ABOVE PLAT IS A TRUE AND CORRECT SO FAR AS IT IS KNOWN TO ME.

SURVEY CALLED FOR BY R.L. PERRIN

SIGNED THIS 17 DAY OF July 1962

Francis R. Rankin
FRANCIS R. RANKIN,
ENGINEER & SURVEYOR
McPHERSON, KANSAS



WICROFILM