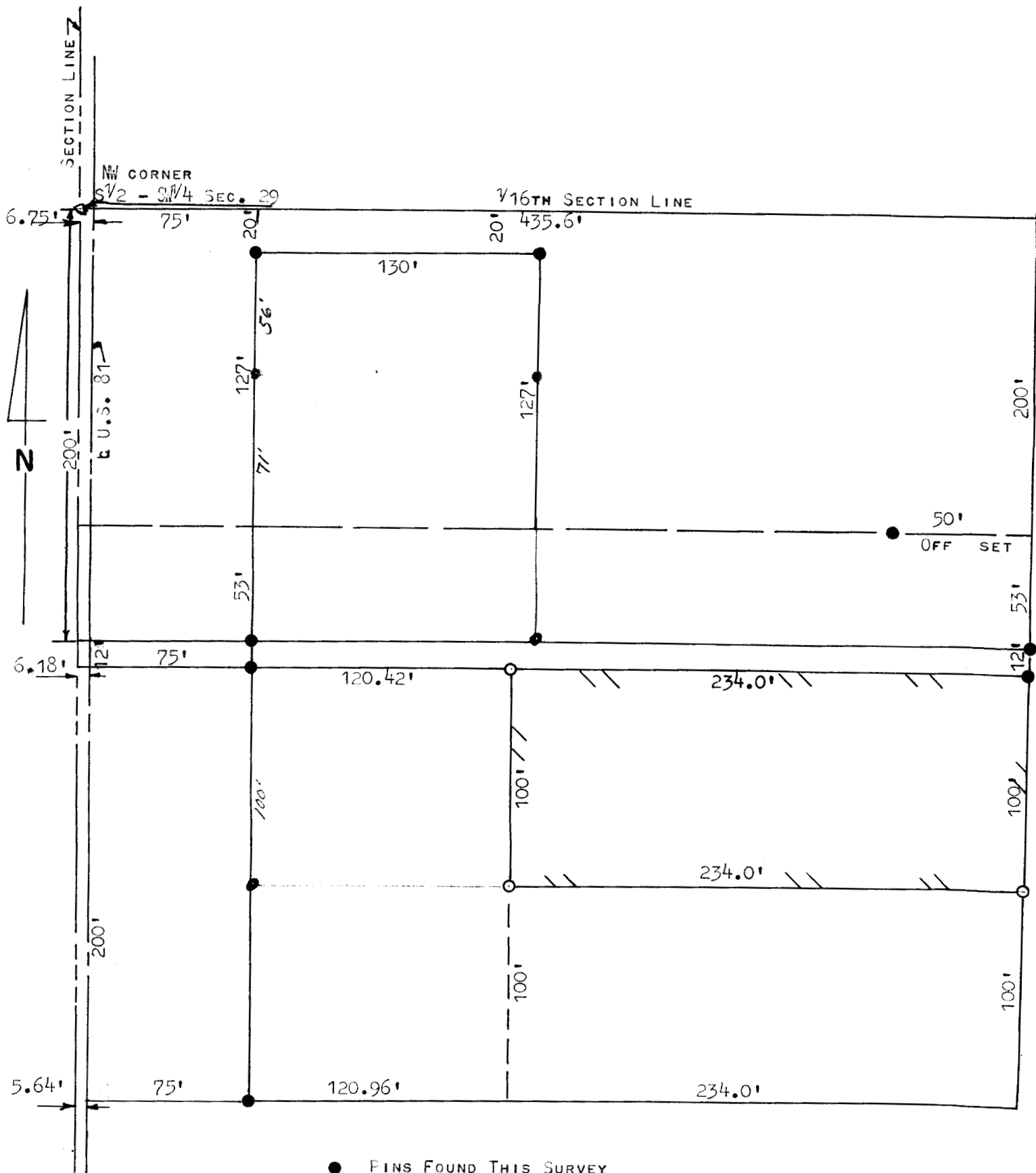


A SURVEY IN THE SOUTH HALF  
SW<sup>1</sup>/<sub>4</sub> SECTION 29, T19S, R3W  
MCIPHERSON COUNTY, KANSAS



STATE OF KANSAS ) SS  
COUNTY OF McPHERSON)

I, FRANCIS RANKIN, COUNTY ENGINEER OF McPHERSON COUNTY, KANSAS, DO HEREBY CERTIFY THAT I DID CAUSE TO BE DONE ON THE 29TH DAY OF JANUARY, 1962, A SURVEY IN THE SOUTH HALF OF SW<sup>1</sup>/<sub>4</sub> SECTION 29-T19S-R3W OF THE 6TH P.M. AND THAT SAID TRACT DESCRIBED AS FOLLOWS:

BEGINNING AT THE NW CORNER OF SW<sup>1</sup>/<sub>2</sub>, SW<sup>1</sup>/<sub>4</sub> SECTION 29-T19S-R3W; THENCE SOUTH 212 FEET SOUTH OF SAID SECTION LINE; THENCE EAST 201.60 FEET PARALLEL WITH NORTH 16 LINE OF SAID 1/4 SECTION TO A POINT OF BEGINNING; THENCE SOUTH 100 FEET PARALLEL WITH WEST SECTION LINE OF SAID SECTION; THENCE EAST 234 FEET; THENCE NORTH 100 FEET; THENCE WEST 234 FEET PARALLEL WITH THE NORTH 16 LINE TO THE PLACE OF BEGINNING,

AND THAT THE ACCOMPANYING PLAT IS A TRUE EXHIBIT OF SAID SURVEY. AS FAR AS IS KNOWN TO ME.

Francis Rankin  
FRANCIS RANKIN  
COUNTY ENGINEER  
MCIPHERSON COUNTY

MICROFILM