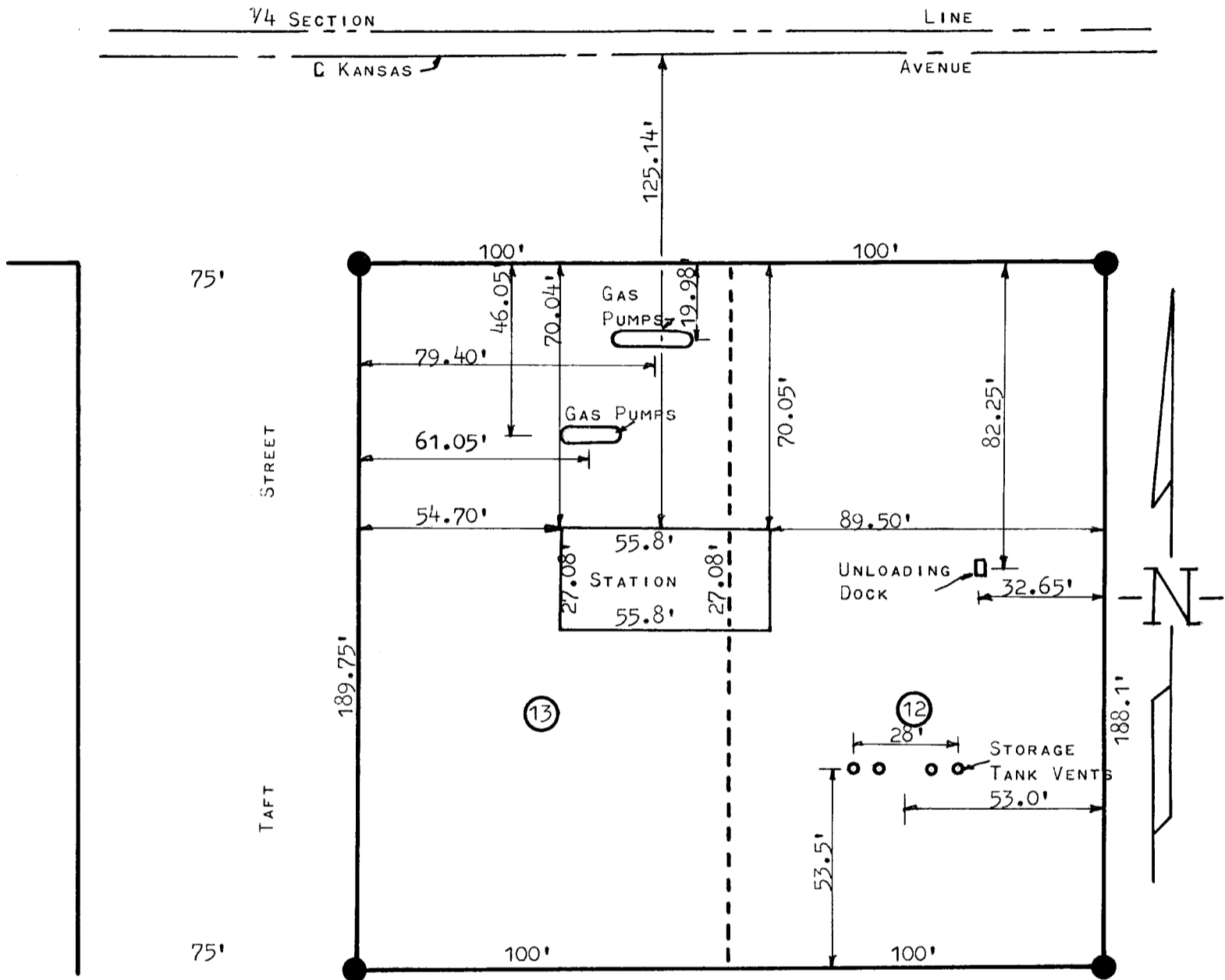


A RESURVEY OF LOTS 12 & 13  
 DELMORE ADDITION  
 PART OF THE SW<sup>1</sup>/<sub>4</sub> SEC. 29-T19S-R3W  
 MCPHERSON COUNTY, KANSAS



PINS SET ON PREVIOUS SURVEY

STATE OF KANSAS )  
 McPHERSON COUNTY, KANSAS ) SS

I, FRANCIS D. WAGNER, COUNTY ENGINEER, MCPHERSON COUNTY, KANSAS DO HEREBY CERTIFY I DID CAUSE TO BE DONE ON THE 21ST DAY OF MAY, 1960 A RESURVEY OF LOT 12 AND OF LOT 13 DELMORE ADDITION, A PART OF THE SW<sup>1</sup>/<sub>4</sub> SECTION 29-T19S-R3W AND THAT THE ACCOMPANYING PLAT IS A TRUE EXHIBIT OF SAID SURVEY.

*Francis D. Wagner*

FRANCIS D. WAGNER  
 COUNTY ENGINEER  
 MCPHERSON COUNTY

23 MAY, 1960



MICROFILM