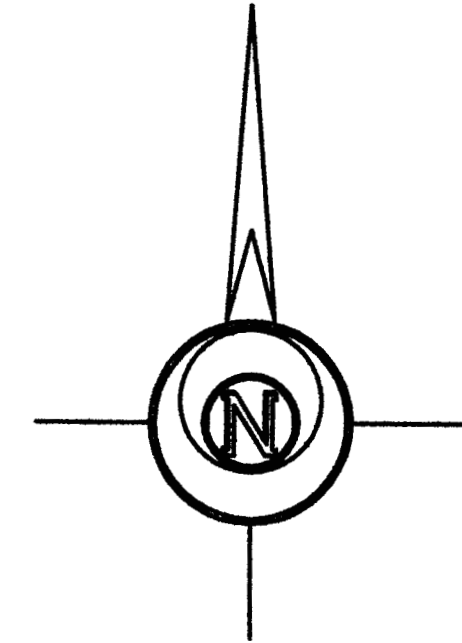
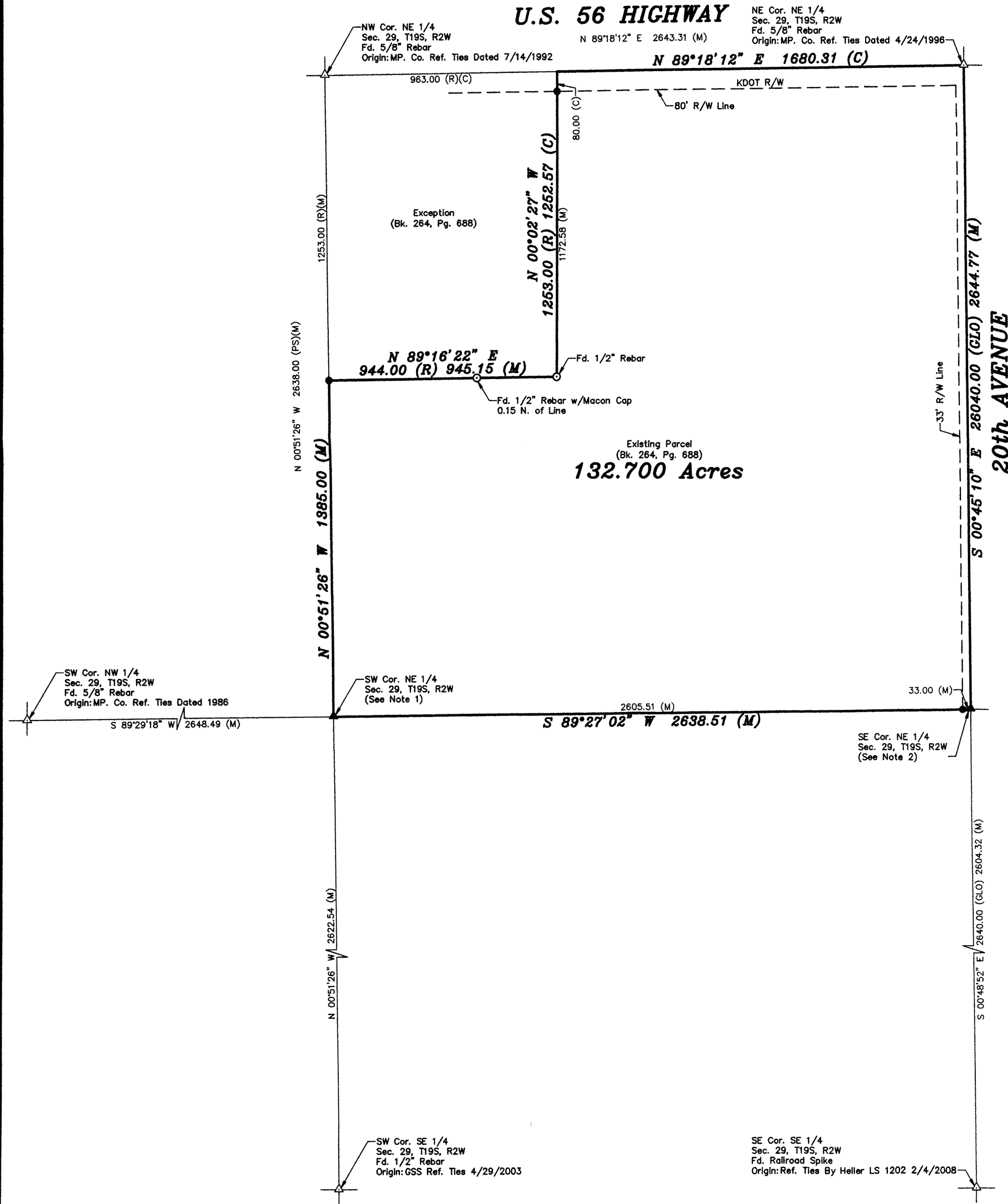


U.S. 56 HIGHWAY



BASIS OF BEARING = NAD 83 KANSAS SOUTH ZONE

LEGEND

- △ - Sectional Monument Found
- ▲ - Section Monument Set (5/8" x 24" Iron Rebar w/G.S.S. Cap)
- - Survey Monument Found
- - 5/8" x 24" Iron Rebar Set w/G.S.S. Cap
- (C) - Calculated
- (M) - Measured
- (PS) - Previous Survey By F.R. Rankin 5/29/1975
- (GLO) - General Land Office

DESCRIPTION OF RECORD:

The Northeast Quarter (NE1/4) of Section Twenty-Nine (29), Township Nineteen (19) South, Range Two (2) West of the Sixth Principal Meridian, except a tract of land containing 27.4 acres more or less: Beginning at the Northwest corner of said NE/4; thence South on the 1/4 Section Line 1253 feet; thence East 944 feet; thence North 1253 feet to the North line of said NE/4; thence West 963 feet to the place of beginning, containing 53 acres more or less, except highway right of way.

SURVEYOR'S NOTES:

- Existing monument referenced in (PS) missing. Reset in line with hedgerow North at (PS) distance per (PS).
- No reference ties for record for corner. GLO stone monument likely destroyed by crossroad culvert at apparent corner. Reset by physical evidence of hedge rows East/West and centerline North/South road in accordance with (PS) and the precedence set by the positions of the other section corner monuments in this section.

SURVEYOR'S CERTIFICATE:

I hereby certify this plat to be a true, correct and complete representation of the property described hereon, as surveyed under my supervision, this 1st day of September, 2016.



| | | | |
|---------------|-----|------------------------------------------------------------------------------------------------------------------------------------------------------------------------------------------------------------------------------------------------------------------|-----------------------------------|
| Prepared For: | | Description: | |
| UNRUH FARMS | | A PORTION OF THE NE 1/4 SECTION 29, T19S, R2W McPHERSON COUNTY, KANSAS | |
| Prepared By: | | Garber Surveying Service, P.A. | |
| GSS | | HUTCHINSON (Main Office) 2908 North Plum St. 67502 Ph. 620-665-7032 Fax 620-663-7401 McPHERSON (Branch Office) 115 East Martin 67460 Ph. 620-241-4441 Fax 620-241-4458 NEWTON (Branch Office) 511 North Poplar St. 67114 Ph. 316-283-5053 Fax 316-283-5073 | |
| Drawn By: | KLL | Scale: 1"=300' | Date of Field Work: July 14, 2016 |
| Checked By: | NDS | Date: 08/31/2016 | Sheet 1 of 1 Sheet(s) |
| | | | Job No: G2016-431 |