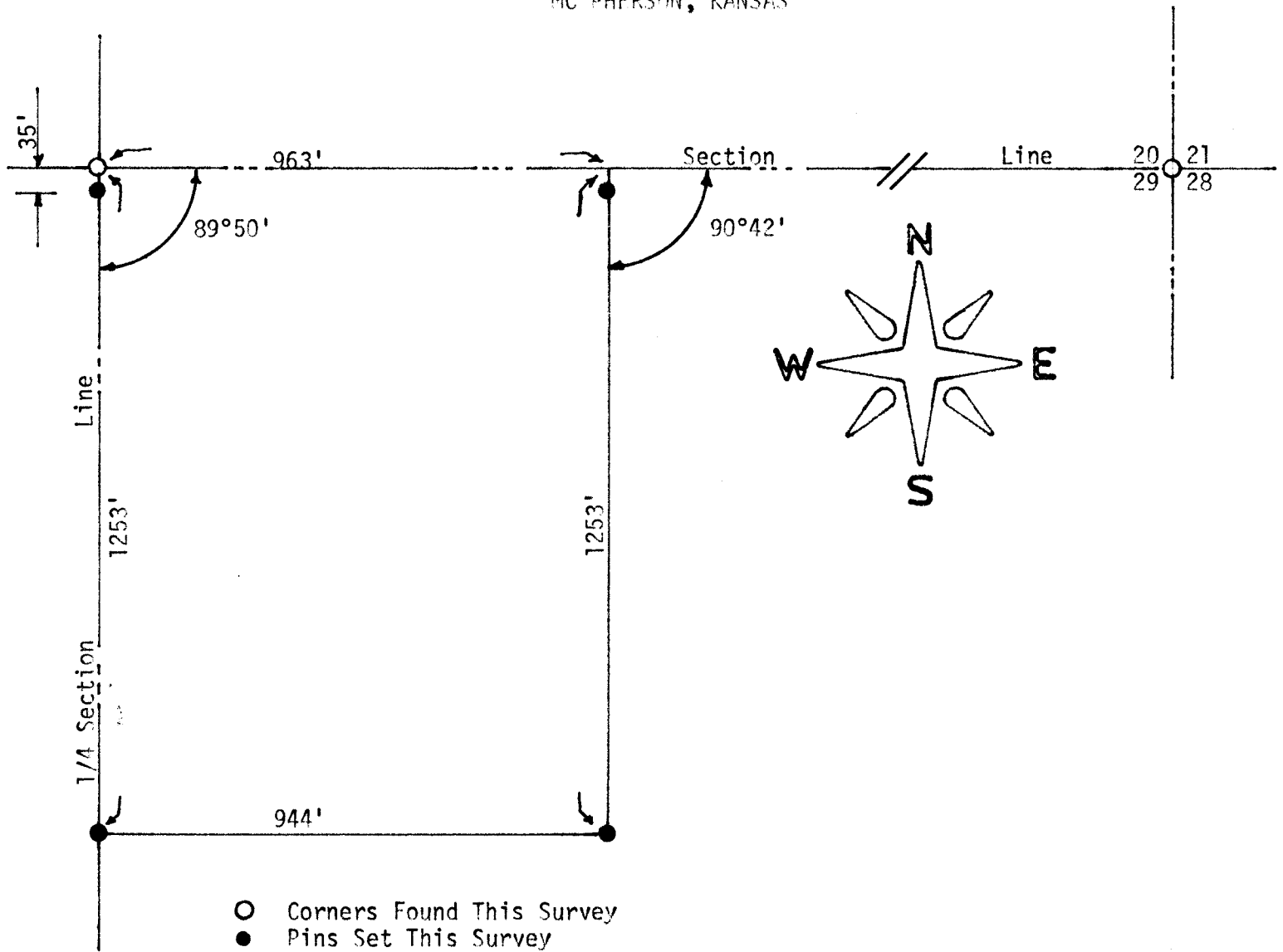


SURVEY OF A TRACT OF LAND IN THE
NE 1/4 SECTION 29, T19S, R2W
MC PHERSON, KANSAS



State of Kansas)
County of McPherson) SS

I, F. R. Rankin, County Engineer of McPherson County, Kansas, do hereby certify that under my supervision a survey was made in the NE 1/4 Section 29, T19S, R2W of the 6th P.M. and described as follows: Beginning at the NW corner of Said NE 1/4; thence South on the 1/4 Section Line 1253 feet; thence East 944 feet; thence North 1253 feet to the North line of said NE 1/4; thence West 963 feet to the place of beginning. The land herein described contains 27.4 acres more or less and the above plat is a true exhibit of said survey as far as it is known to me.

Survey requested by Eli Unruh
Signed this 25 day of September, 1972

F. R. Rankin, P. E.
County Engineer
McPherson, Kansas

