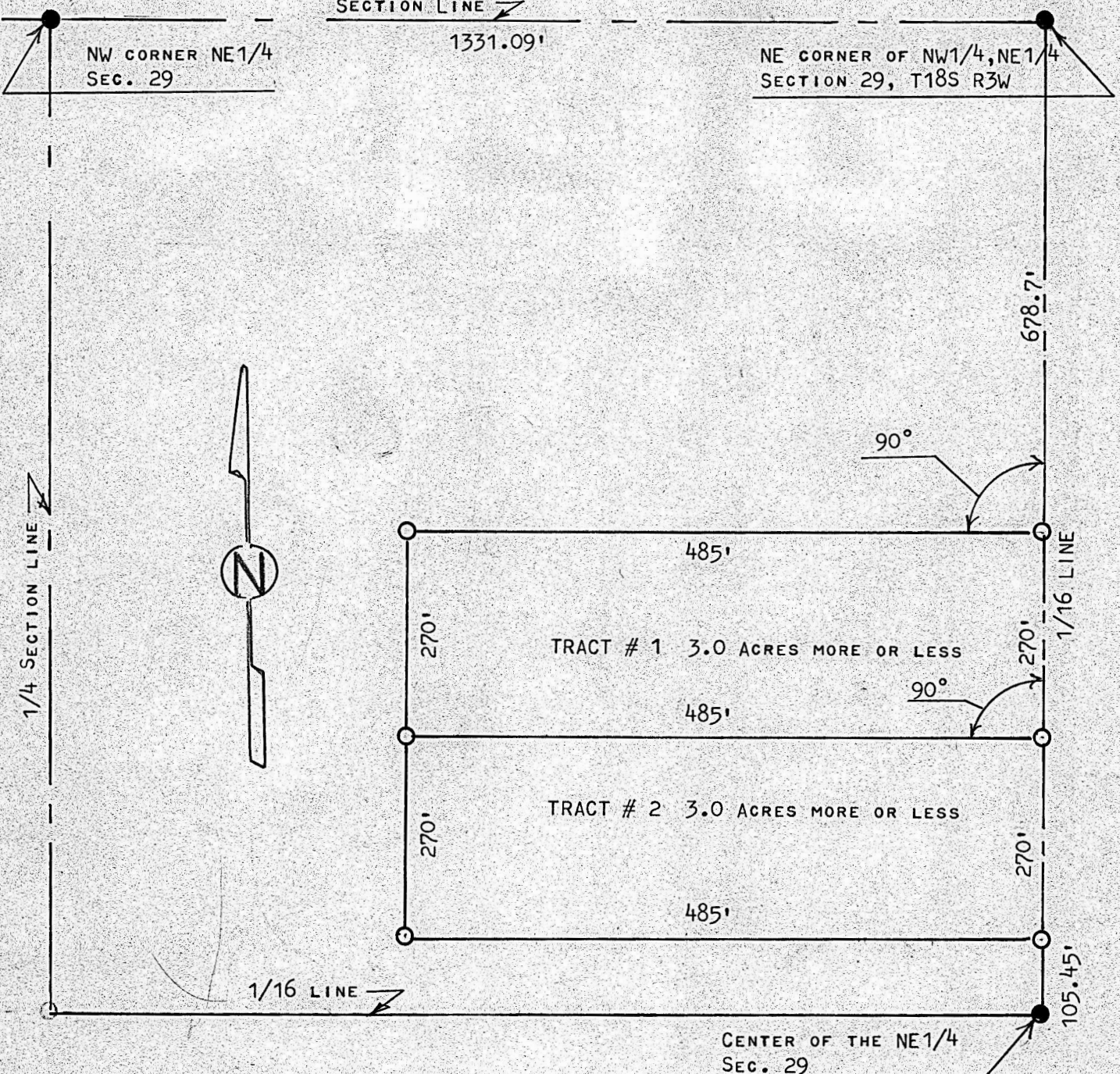


SECTION LINE ↗

1331.09'

NE CORNER OF NW1/4, NE1/4
SECTION 29, T18S R3W



PINS FOUND THIS SURVEY

STATE OF KANSAS)
COUNTY OF MCPHERSON) SS

TRACT # 1

BEGINNING 678.7 FEET SOUTH ON THE 1/16 LINE FROM THE NE CORNER OF THE NW1/4, NE1/4,
OF SAID SECTION 29, T18S, R3W; THENCE RIGHT ANGLE WEST A DISTANCE OF 485 FEET;
THENCE SOUTH PARALLEL WITH 1/16 LINE 270 FEET; THENCE EAST TO 1/16 LINE 485 FEET;
THENCE NORTH 270 FEET TO PLACE OF BEGINNING, SAID TRACT OF LAND CONTAINS 3.0 ACRES
MORE OR LESS.

TRACT # 2

BEGINNING 948.7 FEET SOUTH ON THE 1/16 LINE FROM THE NE CORNER OF THE NW1/4, NE1/4, OF SAID SECTION 29, T18S, R3W; THENCE RIGHT ANGLE WEST A DISTANCE OF 485 FEET; THENCE SOUTH PARALLEL WITH 1/16 LINE 270 FEET; THENCE EAST TO 1/16 LINE 485 FEET; THENCE NORTH 270 FEET TO PLACE OF BEGINNING, SAID TRACT OF LAND CONTAINS 3.0 ACRES MORE OR LESS, AND THAT THE ACCOMPANYING PLAT IS A TRUE EXHIBIT OF SAID SURVEY AS FAR AS IT IS KNOWN TO ME.

SURVEY CALLED FOR BY ROBERT FRESNELL

Signed on this 7th day of OCTOBER, 1980
Melvin Ferguson
 MELVIN FERGUSON
 PROFESSIONAL ENGINEER
 McPHERSON, KANSAS