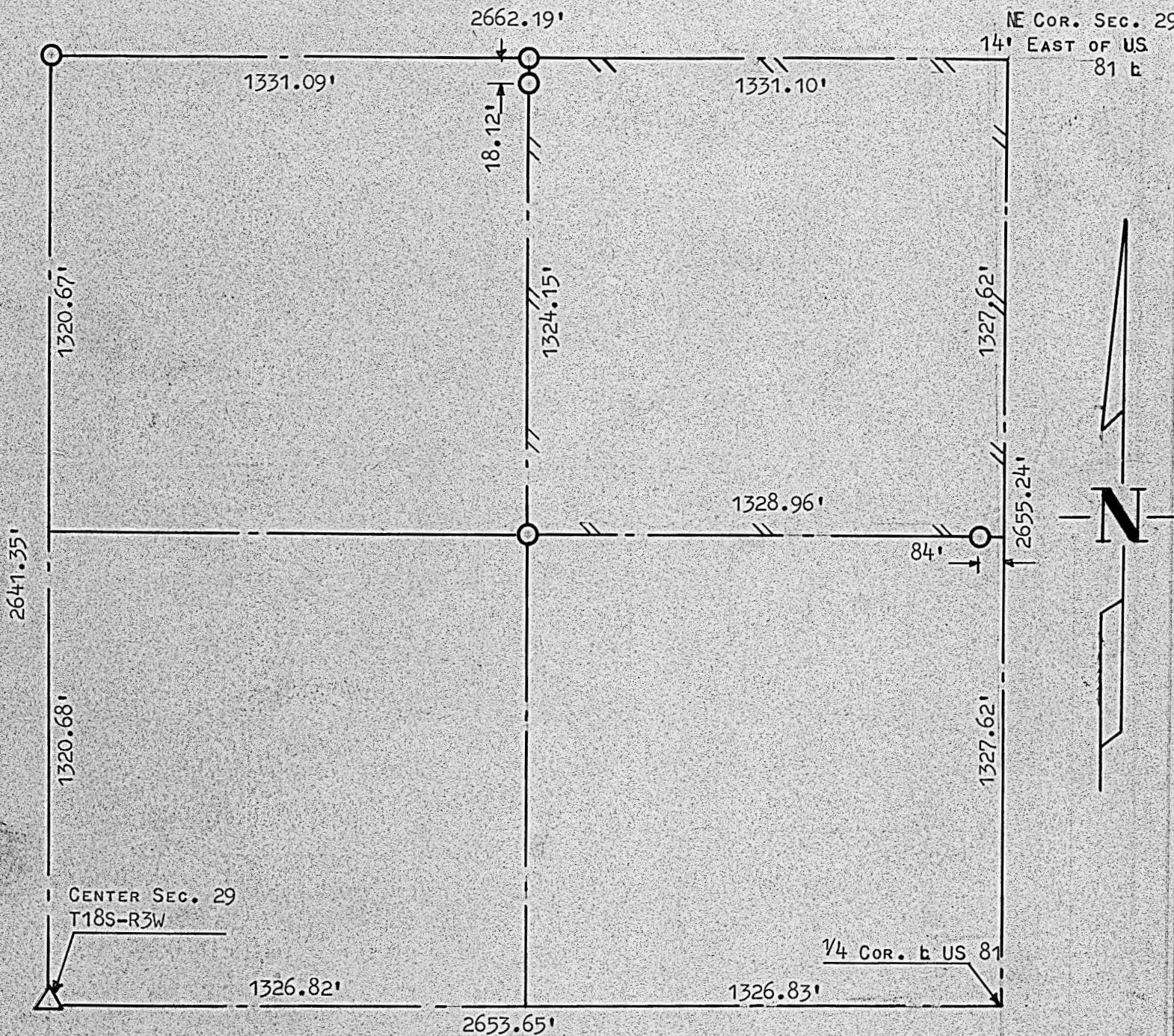


A SURVEY IN THE NE¹/₄ NE¹/₄
SECTION 29, T18S, R3W

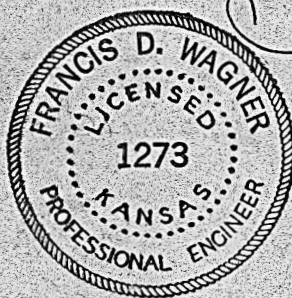


- PINS SET THIS SURVEY.
△ STONE FOUND THIS SURVEY.

STATE OF KANSAS)
COUNTY OF McPHERSON) SS

I, FRANCIS D. WAGNER, COUNTY ENGINEER OF McPHERSON COUNTY, KANSAS
DO HEREBY CERTIFY THAT I DID CAUSE TO BE DONE ON THE 9TH DAY OF
MAY, 1961 A SURVEY OF THE NE¹/₄ NE¹/₄ OF SECTION 29, T18S, R3W OF THE
6TH P.M. AND THAT THE ACCOMPANYING PLAT IS A TRUE EXHIBIT OF SAID
SURVEY.

10 MAY, 1961



Francis D. Wagner
FRANCIS D. WAGNER
COUNTY ENGINEER
McPHERSON COUNTY

MICROFILMED

Jim Conway