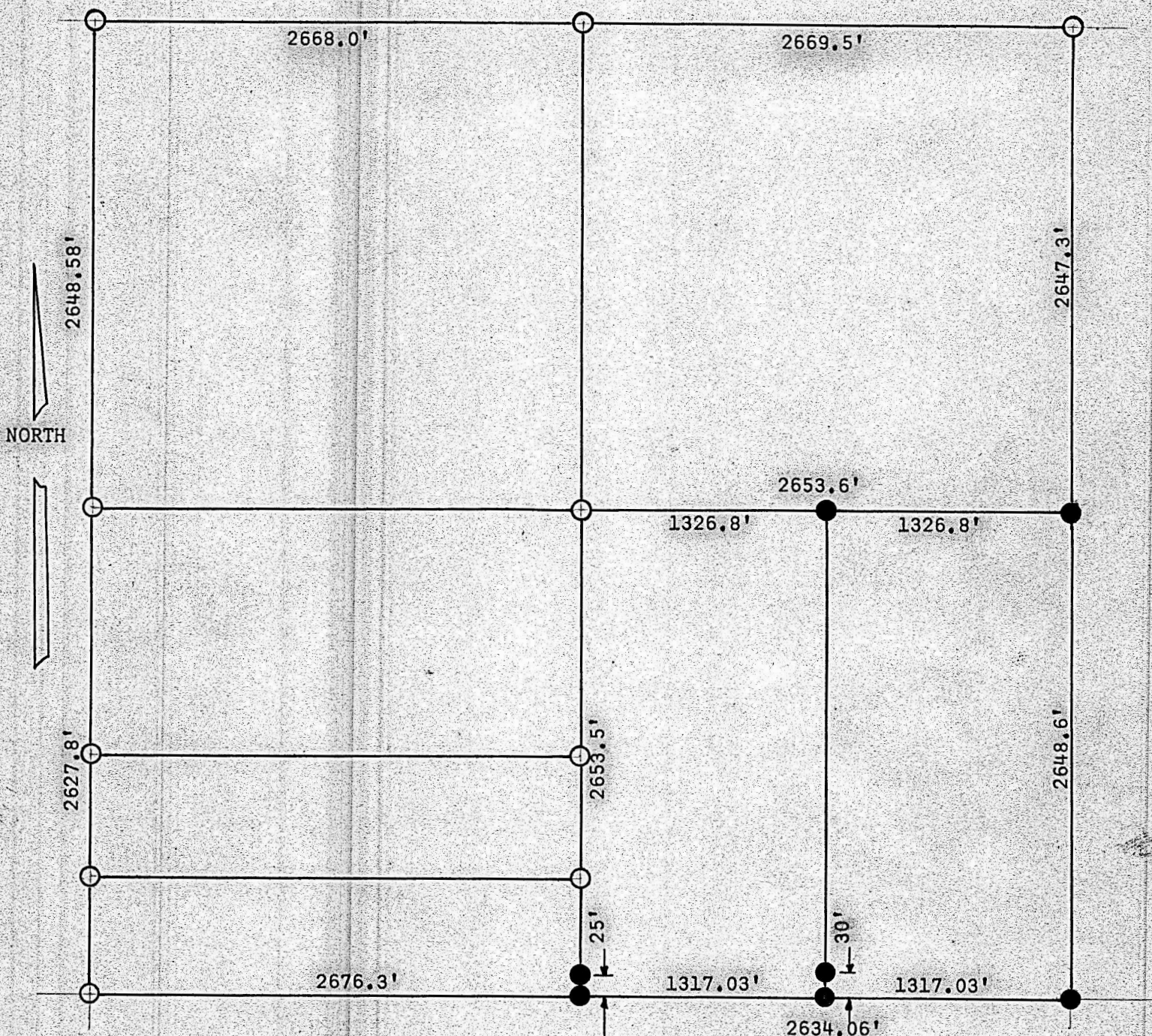


A SURVEY OF THE
W 1/2 - SE 1/4
SECTION 28, T21S, R3W
Ray Siemens - Buehler, Kansas



- Pins Found This Survey
- Pins Set This Survey

State of Kansas) SS
County of McPherson)

I, Francis R. Rankin, County Engineer of McPherson County, Kansas, do hereby certify that I did cause to be done on the 10th day of December, 1962, a survey in the SE 1/4 of Section 28, T21S, R3W of the 6th Principal Meridian, and that the accompanying plat is a true exhibit of said survey as far as it is known to me.

December 11, 1962

Francis R. Rankin
Francis R. Rankin
County Engineer
McPherson County



MICROFILM