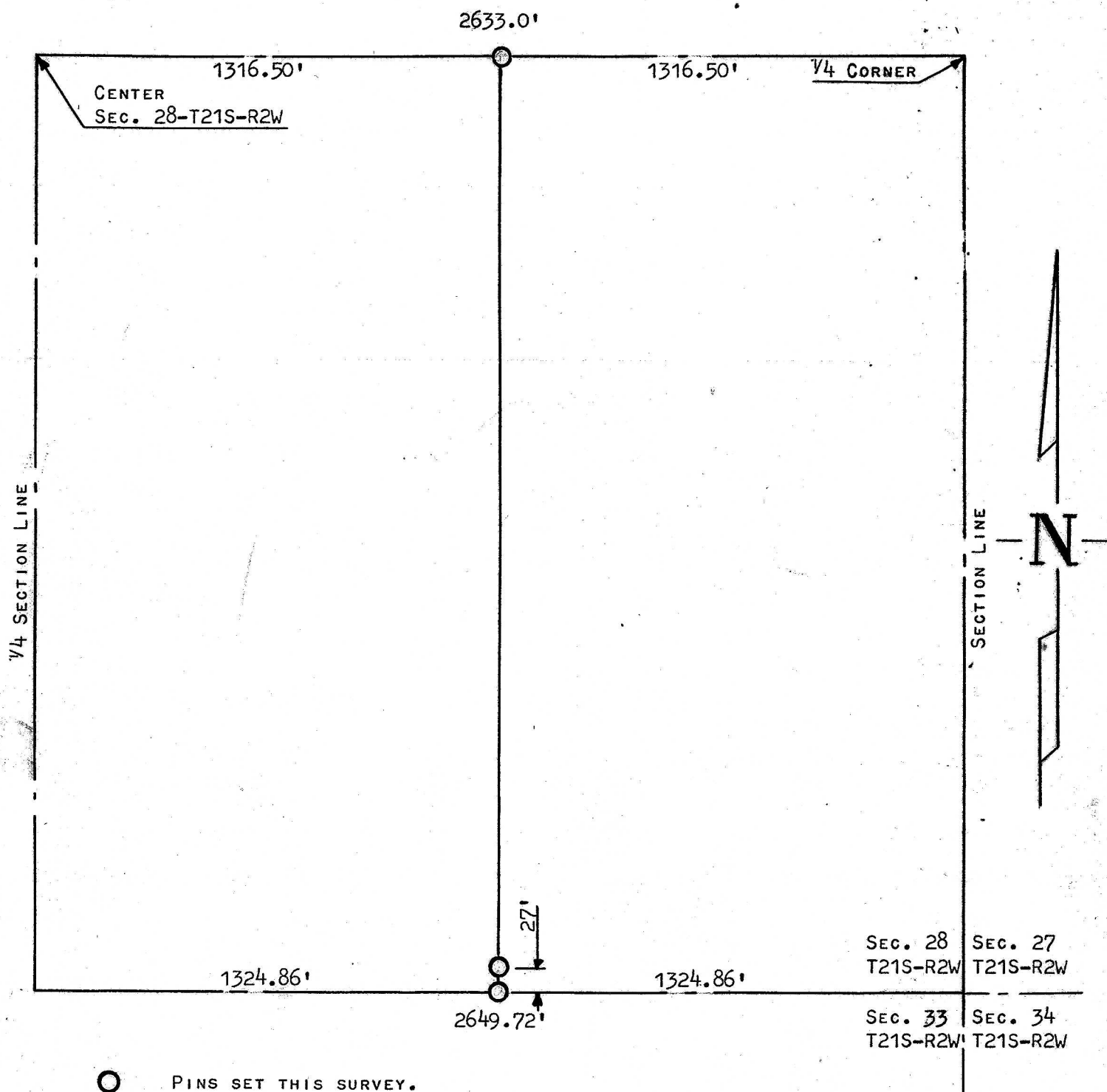


A SURVEY IN THE SE¹/₄
SECTION 28, T21S, R2W



STATE OF KANSAS) SS
COUNTY OF McPHERSON)

I, FRANCIS D. WAGNER, COUNTY ENGINEER OF McPHERSON COUNTY,
KANSAS DO HEREBY CERTIFY THAT I DID CAUSE TO BE DONE ON THE
10TH DAY OF MAY, 1961, A SURVEY TO DETERMINE THE PROPERTY
LINE BETWEEN THE EAST HALF AND THE WEST HALF OF THE SOUTH-
EAST QUARTER OF SECTION 28-T21S-R2W OF THE 6TH P.M., AND
THAT THE ACCOMPANYING PLAT IS A TRUE EXHIBIT OF SAID SURVEY.