

Main Office
2908 North Plum Street
Hutchinson, KS 67502
Office: (620) 665-7032
Fax: (620) 663-7401



Garber Surveying Service, P.A.

Branch Offices
511 North Poplar Street
Newton, KS 67114
Office: (316) 283 - 5053
Fax: (316) 283 - 5073

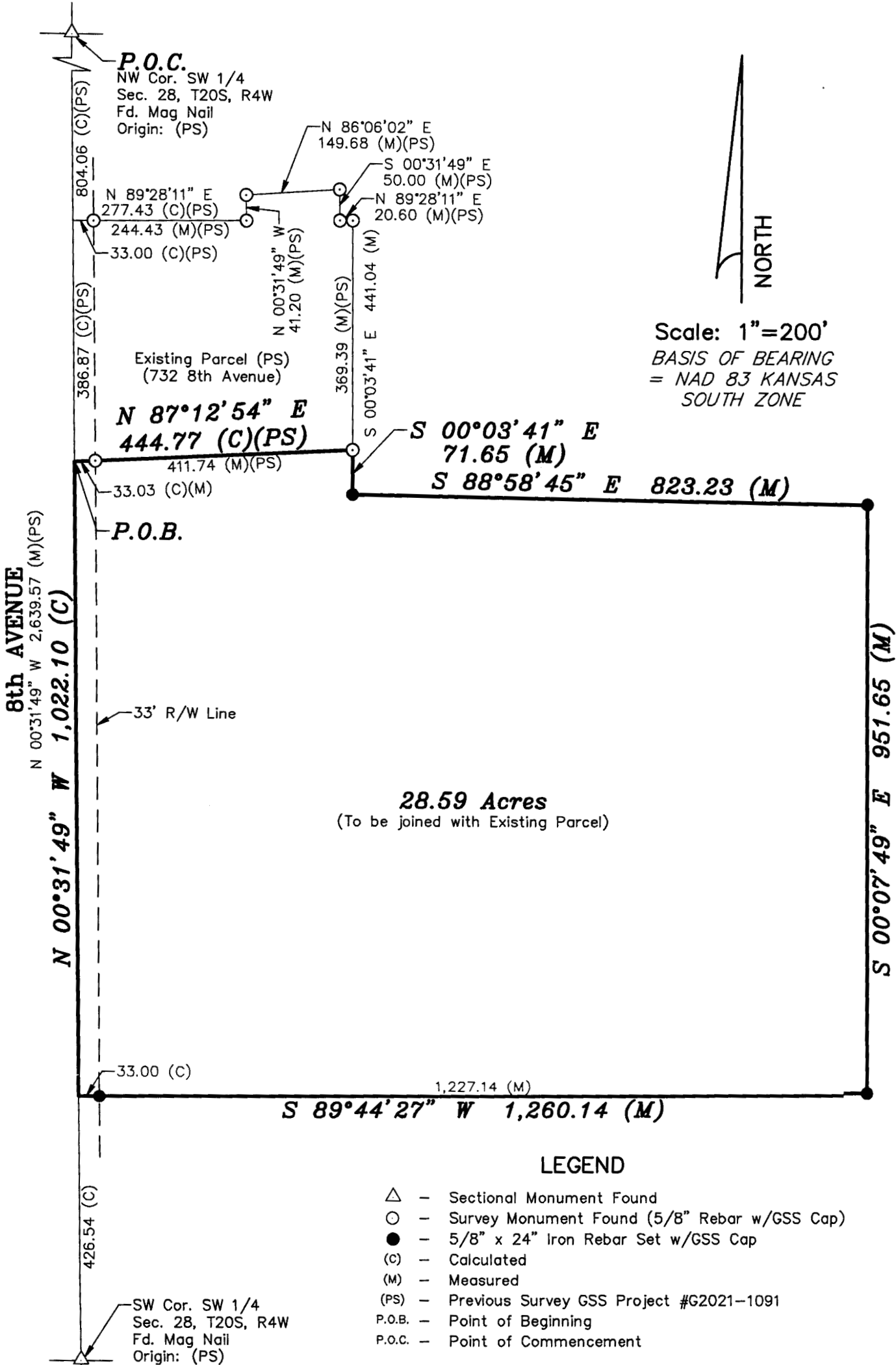
115 East Marlin, Suite 102
McPherson, KS. 67460
Office: (620) 241-4441
Fax: (620) 241-4458

SURVEY FOR: WAYNE REGEHR

Project No. G2024-798

DESCRIPTION: See Sheet 1.

SHEET 2 OF 2



28.59 Acres
(To be joined with Existing Parcel)

LEGEND

- \triangle - Sectional Monument Found
- \circ - Survey Monument Found (5/8" Rebar w/GSS Cap)
- \bullet - 5/8" x 24" Iron Rebar Set w/GSS Cap
- (C) - Calculated
- (M) - Measured
- (PS) - Previous Survey GSS Project #G2021-1091
- P.O.B. - Point of Beginning
- P.O.C. - Point of Commencement