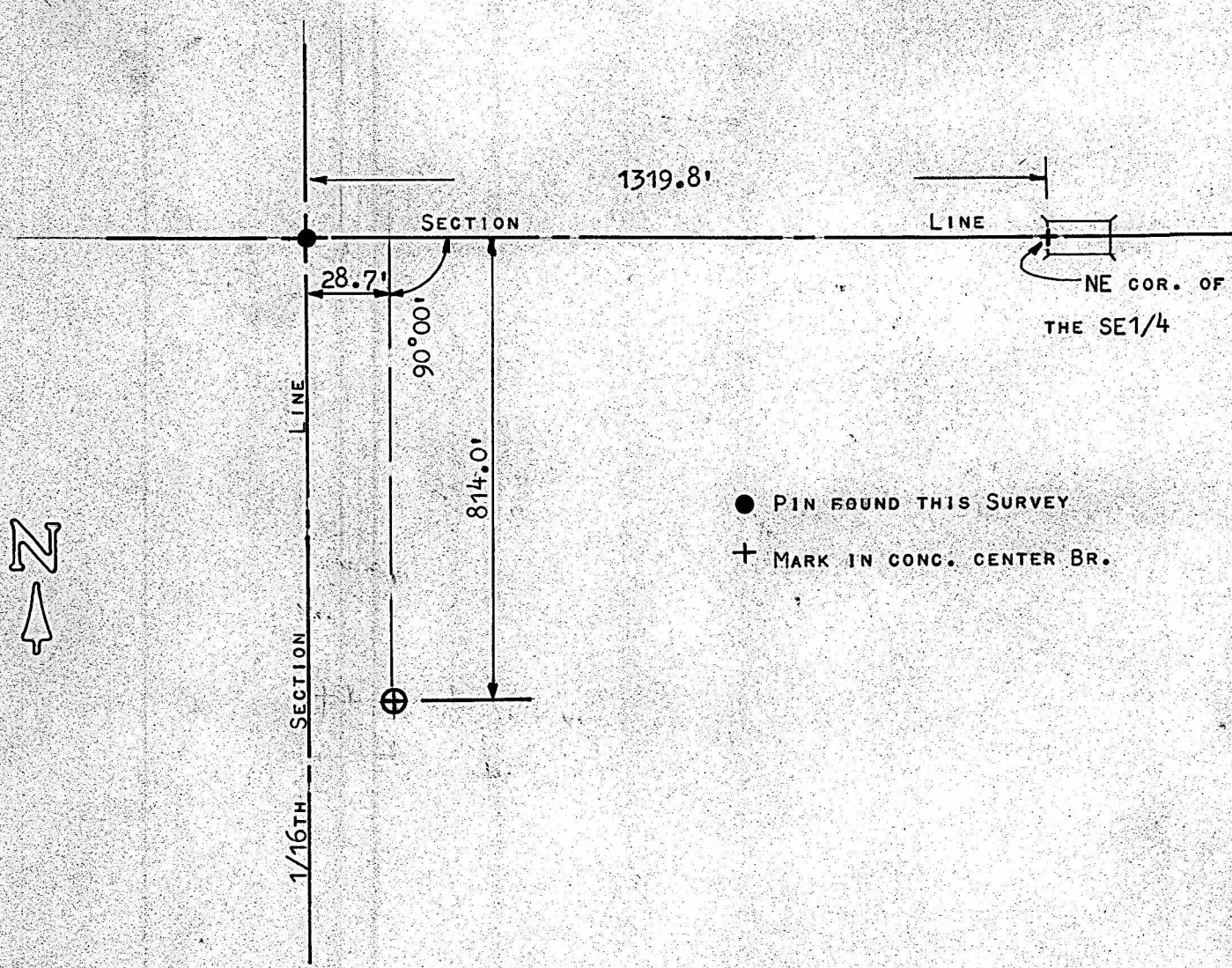


A SURVEY IN THE NE1/4 OF THE SE1/4
SECTION 28, T19S - R4W



STATE OF KANSAS)
COUNTY OF McPHERSON) SS

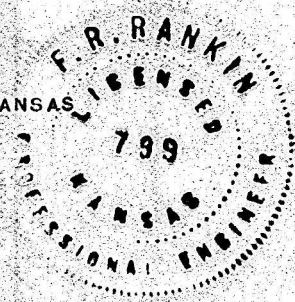
I, FRANCIS RANKIN, COUNTY ENGINEER OF McPHERSON CO., KANSAS, DO
HEREBY CERTIFY THAT UNDER MY SUPERVISION A WELL WAS LOCATED IN
THE NE1/4, SE1/4 OF SECTION 28, T19S - R4W OF THE 6TH P.M. AND
THAT THE ABOVE PLAT IS A TRUE EXHIBIT OF SAID SURVEY AS FAR AS IT
IS KNOWN TO ME.

SURVEY CALLED FOR BY MELLAND

SIGNED ON THIS 15 DAY OF APRIL, 1970.

F. R. Rankin

F. R. RANKIN
COUNTY ENGINEER
McPHERSON Co., KANSAS



MICROFILM 7