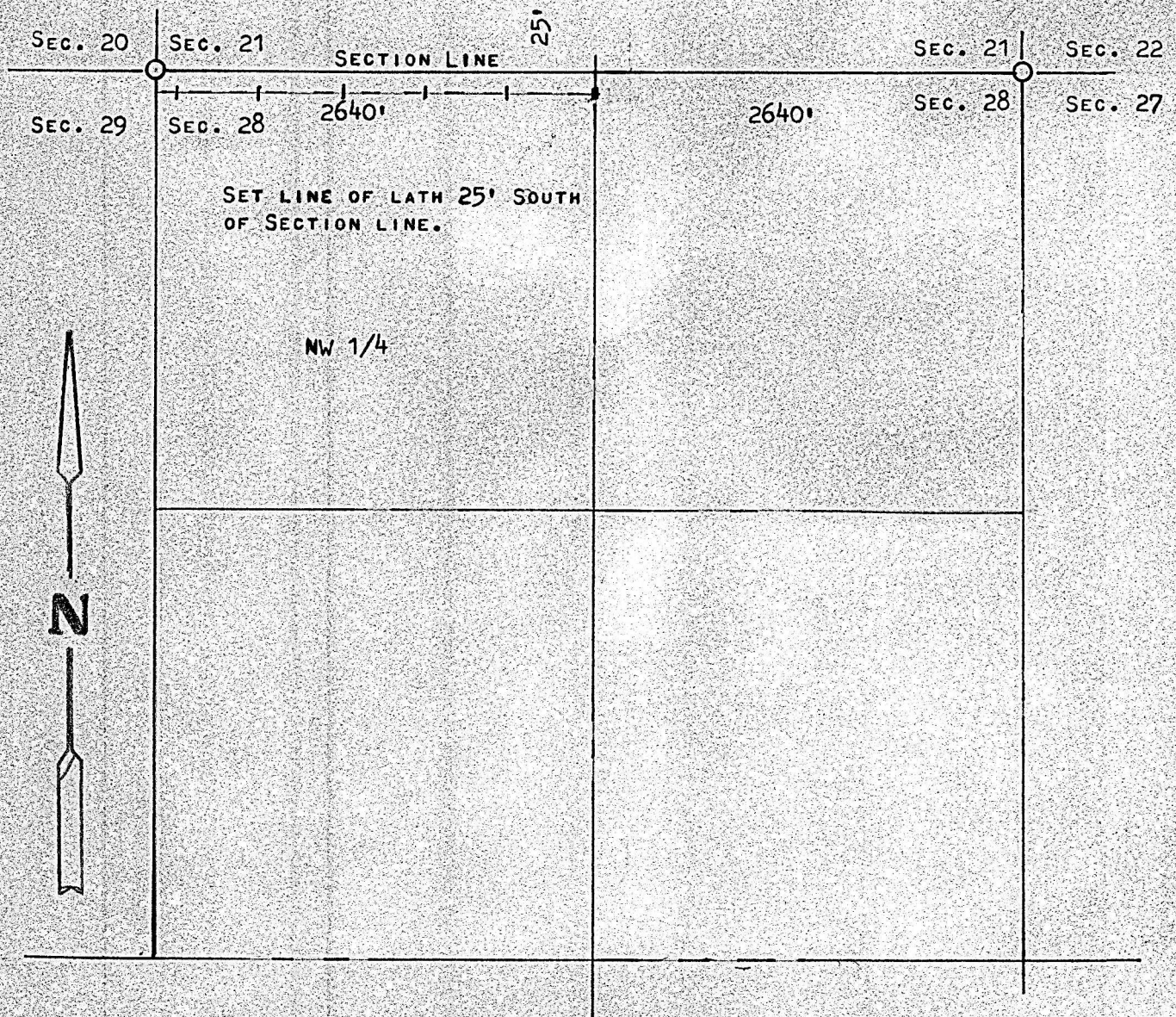


A SURVEY OF THE NORTH LINE NW1/4,  
SECTION 28, T19S, R4W, MCPHERSON,  
COUNTY, KANSAS



○ PINS FOUND THIS SURVEY

STATE OF KANSAS )  
COUNTY OF MCPHERSON ) SS

I, FRANCIS RANKIN, PRPFSSIONAL ENGINEER OF THE STATE OF KANSAS  
DO HEREBY CERTIFY THAT UNDER MY SUPERVISION A SURVEY WAS MADE  
TO DETERMINE THE NORTH LINE OF THE NW1/4, SECTION 28, T19S, R4W,  
OF THE 6TH P.M. AND THAT THE ABOVE PLAT IS A TRUE EXHIBIT OF SAID  
SURVEY AS FAR AS IT IS KNOWN TO ME.

SURVEY CALLED FOR FRANCIS MELLAND

SIGNED THIS 30 DAY OF OCTOBER, 1972

*Francis Rankin*  
FRANCIS RANKIN  
PROFESSIONAL ENGINEER  
MCPHERSON, KANSAS

