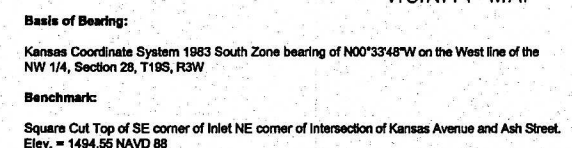


A Portion of the NW 1/4, SEC. 28, T19S, R3W

A - 209 E. Kansas Ave.
B - 110 N. Ash St.
C - 108-108 1/2 N. Ash St.

Subject property appears to be located in shaded Zone "X", "Areas determined to be outside the 0.2% annual chance floodplain", according to graphical plotting on Flood Insurance Rate Map, Community Panel Number 201113C0356E, effective date: January 16, 2009.



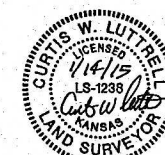
Certification:

To Emprise Bank, DeWayne R. Herrs and Roberta R. Herrs, Co-Trustees of The DeWayne and Roberta Herrs Family Trust dated March 5, 2001 and Kansas Secured Title Insurance Company:

This is to certify that this map or plat and the survey on which it is based were made in accordance with the 2011 Minimum Standard Detail Requirements for ALTA/ACSM Land Title Surveys, jointly established and adopted by ALTA and NSPS, and includes Items 1, 2, 3, 4, 6a, 6b, 7a, 7b1, 8, 9, 11a, 13 and 15 of Table A thereof. The field work was complete January 9, 2015.

Date of Plat or Map: January 14, 2015

Curtis W. Luttrell
Curtis W. Luttrell R.L.S. 1238
411 N. Webb Road
Wichita, KS 67206
316-684-9600



- CARBIDE ID CAP
 MONUMENT BOX

 - - SURVEY MONUMENT
 - - BENCHMARK
 - SN - TREE AND DIAMETER
 - SN - SIGN
 - ROW OF BUSHES
 - FENCE
 - ⑫ - STANDARD PARKING SPOTS
 - ♿ ③ - HANDICAP PARKING SPOTS
 - ⑫ - SCHEDULE "B" ITEM
 - P - PLATTED
 - R - RECORDED
 - M - MEASURED
 - SWB - SOUTH WESTERN BELL
 - ⌚ - GAS METER
 - G - GAS LINE
 - SS - SANITARY SEWER MANHOLE
 - Ⓐ - CLEANOUT
 - SANITARY SEWER LINE
 - TR - TELEPHONE RISER
 - TV - CABLE TV RISER
 - TV - UNDERGROUND CABLE TV LINE
 - ⚡ - POWER POLE WITH LIGHT
 - PP - POWER POLE
 - ☀ - LIGHT POLE
 - ☑ - AIR CONDITIONING UNIT
 - TR - TRAFFIC CONTROL BOX
 - ⊕ - TRAFFIC SIGNAL MANHOLE
 - ⚡ - TRAFFIC SIGNAL LIGHT POLE
 - UGE - UNDERGROUND ELECTRIC LINE
 - OHE - OVERHEAD ELECTRIC LINE
 - ⦿ - FIRE HYDRANT
 - WV - WATER VALVE
 - ⌚ - WATER METER
 - V - WATER LINE
 - - INLET
 - Ⓢ - STORM WATER MANHOLE
 - STORM SEWER PIPE

See survey by LC Teeter
dated 1950 on file at
McPherson County
Public Works