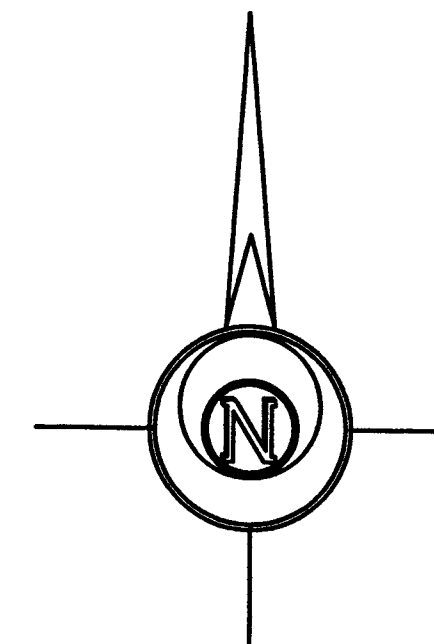


WEST HIGHWAY 56

NE Cor. NE 1/4
Sec. 28, T19S, R2W
Fd. 5/8" Rebar (PS)



-100 0 100 200 300

BASIS OF BEARING = NAD 83 KANSAS SOUTH ZONE

LEGEND

- △ - Sectional Monument Found
- - Survey Monument Found 5/8" Rebar w/GSS CLS 52 Cap unless otherwise noted
- - 5/8" x 24" Iron Rebar Set w/GSS CLS 52 Cap
- U/E - Utility Easement
- (C) - Calculated
- (M) - Measured
- (R) - Record measurement
- (PS) - Previous Survey GSS Project #G2018-797
- P.O.B. - Point of Beginning
- Private Road Easement

DESCRIPTION:

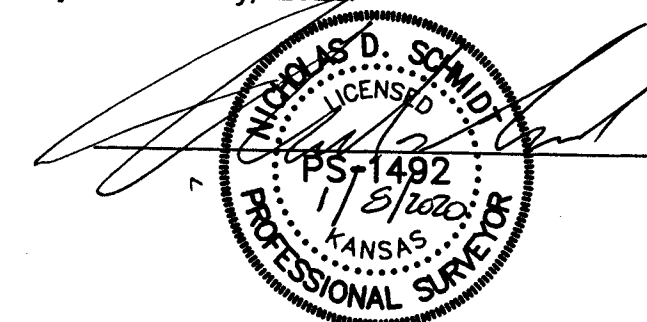
A portion of the Northeast Quarter of the Northeast Quarter of Section 28, Township 19 South, Range 2 West of the 6th Principal Meridian, McPherson County, Kansas described as follows:

Beginning at the Southwest corner of said Northeast Quarter of the Northeast Quarter; thence on a NAD 83 Kansas South Zone bearing of North 00°45'17" West on the West line of said Northeast Quarter of the Northeast Quarter a distance of 478.51 feet to the Southwest corner of Lot 4, Galva Industrial Park, a subdivision in said Northeast Quarter of the Northeast Quarter; thence North 87°23'20" East on the South line of said Lot 4 and the South line of Lot 3 of said Galva Industrial Park a distance of 172.87 feet; thence South 75°03'34" East continuing on the South line of said Lot 3 a distance of 93.92 feet; thence South 67°00'21" East continuing on said South line a distance of 121.64 feet; thence North 89°10'38" East continuing on said South line a distance of 38.40 feet to the Southeast corner of said Lot 3; thence South 00°49'33" East along the extended East line of said Lot 3 a distance of 402.81 feet to the South line of said Northeast Quarter of the Northeast Quarter; thence South 88°16'52" West on said South line a distance of 413.50 feet to the point of beginning.

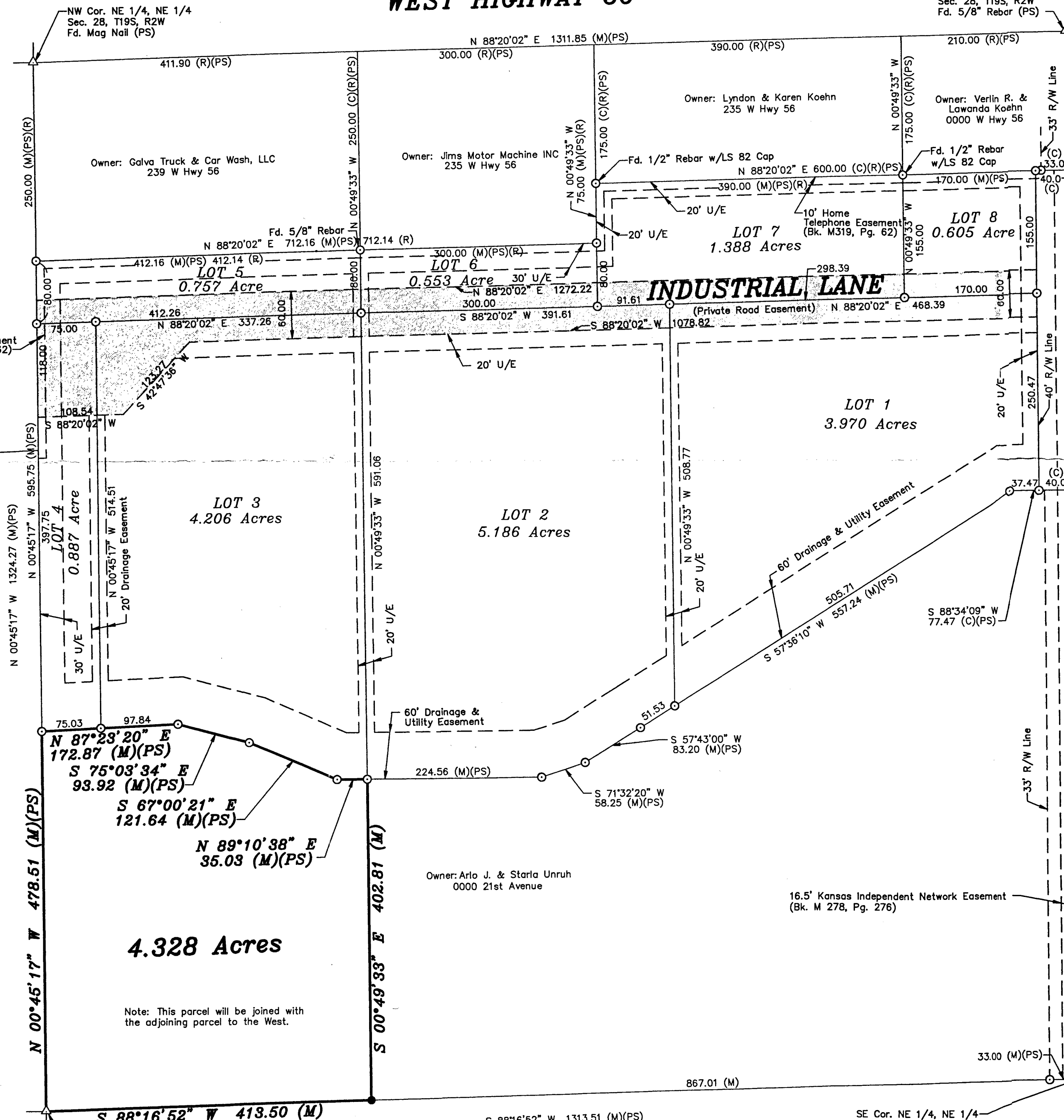
Containing **4.328 Acres** and subject to any easements or restrictions of record.

SURVEYOR'S CERTIFICATE:

I hereby certify this plat to be a true, correct and complete representation of the property described hereon, as surveyed under my supervision, this 8th day of January, 2020.



Prepared For:		Description:	
ARLO UNRUH		A PORTION OF THE NE 1/4, NE 1/4 SECTION 28, T19S, R2W MCPHERSON COUNTY, KANSAS	
Prepared By:		Garber Surveying Service, P.A.	
		HUTCHINSON (Main Office) 2908 North Plum St. 67502 Ph. 620-665-7032 Fax 620-663-7401	
		MCPHERSON (Branch Office) 115 East Marlin 67460 Ph. 620-241-4441 Fax 620-241-4458	
		NEWTON (Branch Office) 511 North Poplar St. 67114 Ph. 316-283-5053 Fax 316-283-5073	
Drawn By:	KDZ	Scale: 1"=100'	Date of Field Work: December 19, 2019
Checked By:	NDS	Date: 01/08/2020	Sheet 1 of 1 Sheet(s)
			Job No: G2019-909



P.O.B.
SW Cor. NE 1/4, NE 1/4
Sec. 28, T19S, R2W
Fd. 5/8" Rebar w/GSS Cap (PS)

SE Cor. NE 1/4, NE 1/4
Sec. 28, T19S, R2W
Fd. 5/8" Rebar w/GSS CLS 52 Cap (PS)