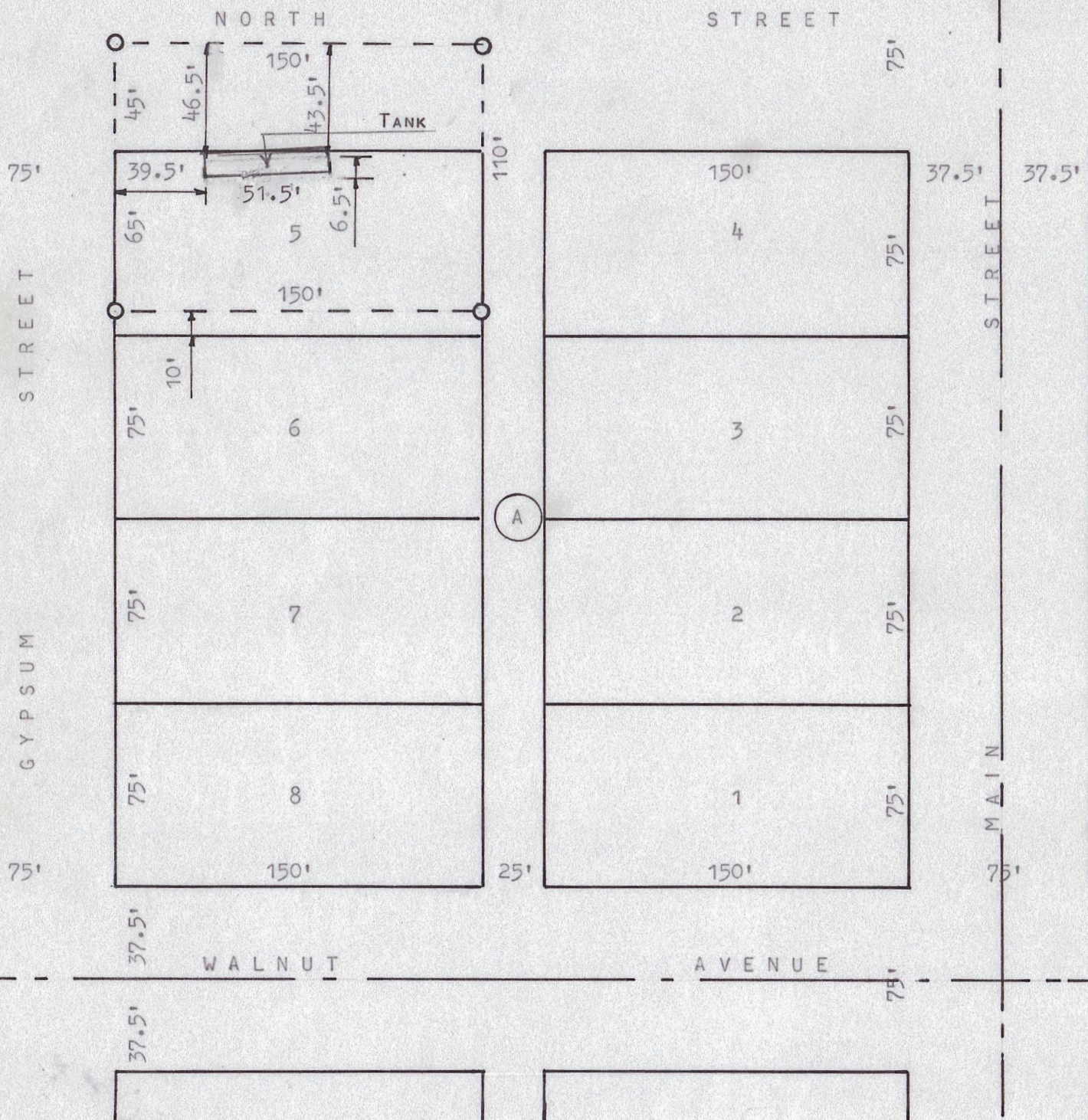


A SURVEY OF A TRACT OF LAND
ROXBURY, KANSAS



○ PINS SET THIS SURVEY

STATE OF KANSAS)
COUNTY OF McPHERSON) ^{SS}

I, FRANCIS RANKIN, COUNTY ENGINEER OF McPHERSON COUNTY, KANSAS DO HEREBY CERTIFY THAT UNDER MY SUPERVISION A SURVEY WAS DONE OF THE NORTH 65 FEET OF LOT 5, BLOCK A ORIGINAL TOWN AND A STRIP OF LAND 45 FEET WIDE AND 150 FEET LONG IN NORTH STREET, NORTH OF SAID LOT 5 IN THE TOWN OF ROXBURY, KANSAS, AND THAT THE ACCOMPANYING PLAT IS A TRUE EXHIBIT OF SAID SURVEY AS FAR AS IT IS KNOWN TO ME.

SURVEY CALLED FOR BY OLIN MATHIESON CHEM. CORP.

SIGNED THIS 30 DAY OF AUGUST, 1969.

F. R. Rankin
F. R. RANKIN
COUNTY ENGINEER
McPHERSON CO., KANSAS



MICROFILM

NOTE: NORTH STREET HAS BEEN DEDICATED TO THE PUBLIC BUT HAS NEVER BEEN OPEN FOR TRAFFIC.