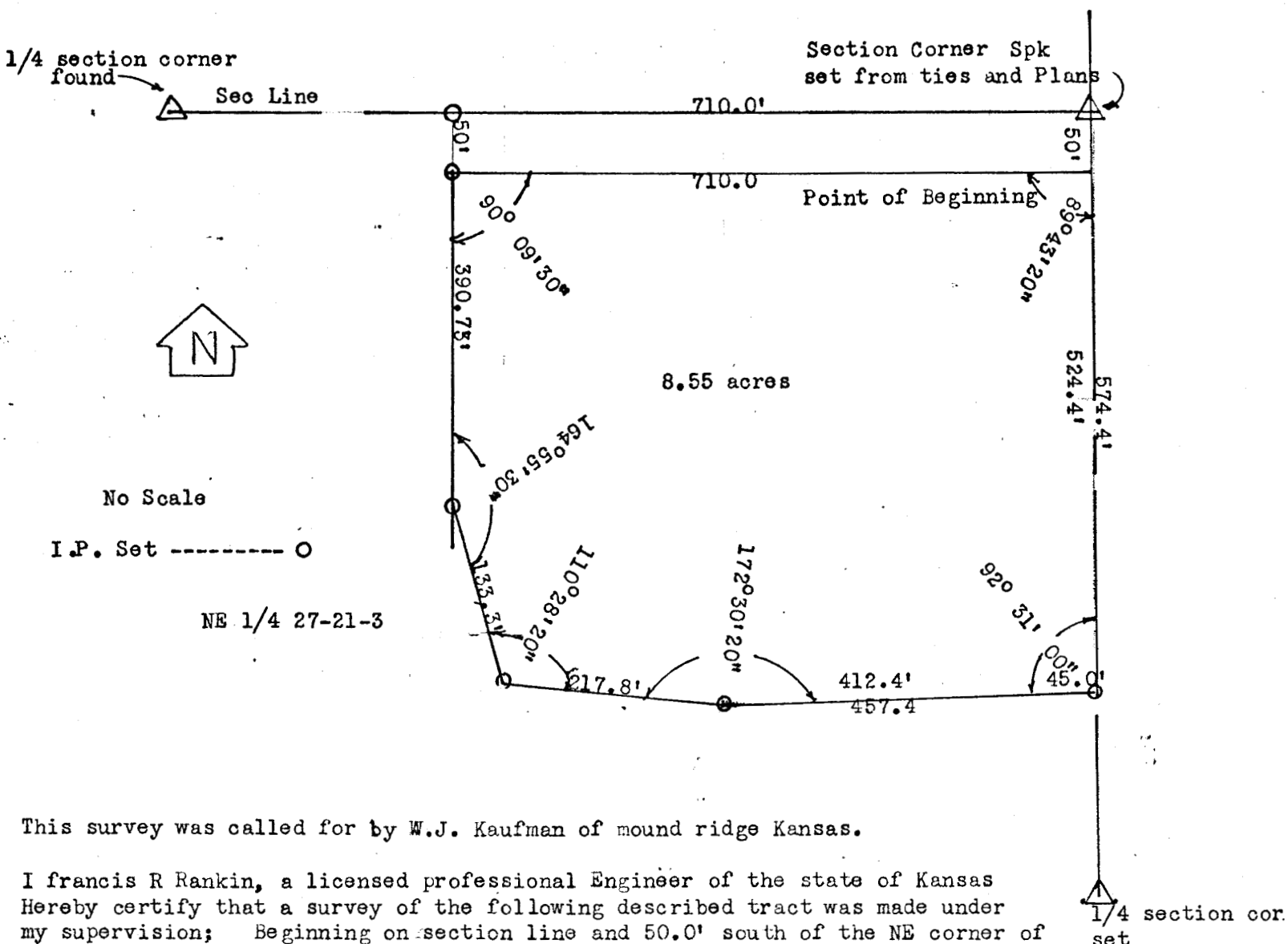


A survey in NE 1/4 27-21-3



This survey was called for by W.J. Kaufman of mound ridge Kansas.

I Francis R Rankin, a licensed professional Engineer of the state of Kansas
 Hereby certify that a survey of the following described tract was made under
 my supervision; Beginning on section line and 50.0' south of the NE corner of
 said section 27;- Thence south on Section line 524.4';-Thence westerly at an
 interior angle of $92^{\circ}31'00''$ a distance of 457.4';-thence at an interior angle
 of $172^{\circ}30'20''$ a distance of 217.8';- Thence at an interior angle of $110^{\circ}28'20''$
 a distance of 133.3';-Thence at an interior angle of $164^{\circ}55'30''$ a distance of
 390.73';-Thence at an interior angle of $90^{\circ}09'30''$ a distance of 710.0' and to
 the point of beginning. Said tract contains 8.55 Acres more or less and
 excludes the 50' right of way along the north line of said section. I further
 certify the above plat to be representative of the survey made under my super-
 vision so far as it is known to me.

Signed this 2 day of SEPTEMBER 1975.

F.R. Rankin
 F.R. Rankin P.E. 799 Kansas
 799
 KANSAS
 PROFESSIONAL ENGINEER

MICROFILM

CORNER STONE TIES:

NE Section corner Spk Nail
 74.0 S.E. to derby Pipe line marker
 80.4 N.N.E to Derby pipe line marker

East 1/4 Corner #4 Re-Bar
 In line with Hege going west
 30.4 west to cor. Pst.
 59.4 N.E. to ctr. P.P.