

Saved 4/5/2018 10:37:48 AM by K200K  
Plot Date & Time Thursday, April 05, 2018 3:34:08 PM Dwg Path C:\Users\pschmidt\Documents\GSS Projects\2018\20180201 KWE PSCS 16-184

NW Cor. NE 1/4  
Sec. 27, T20S, R3W  
Fd. Mag. Nail  
Origin: County Referenced by  
LS 1202 (5/25/2005)

# COMANCHE ROAD

S 89°59'03" E 2652.19 (M)

NE Cor. NE 1/4  
Sec. 27, T20S, R3W  
Fd. 80 D Spike  
Origin: GSS Project #G2016-184

P.O.B.

S 89°59'03" E 701.30 (C)

1950.89 (C)

50.00 (M)

63.94 (C)

50' R/W Line

S 89°59'03" E 701.30 (C)

352.75 (C)

238.81 (C)

S 27°00'03" W 51.73 (M)

N 89°02'12" W 72.07 (M)

S 64°58'04" W 176.21 (M)

S 50°48'04" W 197.95 (M)

S 37°58'33" E 178.52 (M)

S 50°53'53" E 131.63 (M)

S 82°24'08" E 365.34 (M)

N 1/2 NE 1/4

26.014 ACRES

N 00°57'12" W 1318.21 (M)

1268.21 (C)

N 00°57'12" W 2636.42 (M)

SW Cor. N 1/2 NE 1/4  
Sec. 27, T20S, R3W

N 89°56'22" W 1073.68 (M)

N 89°56'22" W 2651.84 (M)

1578.16 (M)

SE Cor. N 1/2 NE 1/4  
Sec. 27, T20S, R3W

S 00°56'13" E 2640.56 (M)

16TH AVENUE

1320.28 (M)

S 00°56'13" E 1320.28 (M)

S 00°56'13" E 2640.00 (PS)

S 00°56'13" E 2640.00 (PS)

S 00°56'13" E 2640.00 (PS)

S 00°56'13" E 2640.00 (PS)

S 00°56'13" E 2640.00 (PS)

S 00°56'13" E 2640.00 (PS)

S 00°56'13" E 2640.00 (PS)

S 00°56'13" E 2640.00 (PS)

S 00°56'13" E 2640.00 (PS)

S 00°56'13" E 2640.00 (PS)

S 00°56'13" E 2640.00 (PS)

S 00°56'13" E 2640.00 (PS)

S 00°56'13" E 2640.00 (PS)

S 00°56'13" E 2640.00 (PS)

S 00°56'13" E 2640.00 (PS)

S 00°56'13" E 2640.00 (PS)

S 00°56'13" E 2640.00 (PS)

S 00°56'13" E 2640.00 (PS)

S 00°56'13" E 2640.00 (PS)

S 00°56'13" E 2640.00 (PS)

S 00°56'13" E 2640.00 (PS)

S 00°56'13" E 2640.00 (PS)

S 00°56'13" E 2640.00 (PS)

S 00°56'13" E 2640.00 (PS)

S 00°56'13" E 2640.00 (PS)

S 00°56'13" E 2640.00 (PS)

S 00°56'13" E 2640.00 (PS)

S 00°56'13" E 2640.00 (PS)

S 00°56'13" E 2640.00 (PS)

S 00°56'13" E 2640.00 (PS)

S 00°56'13" E 2640.00 (PS)

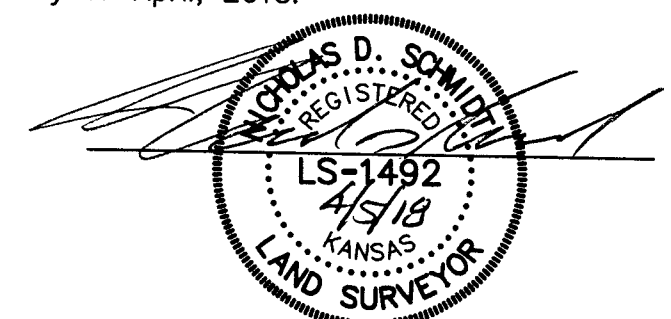
S 00°56'13" E 2640.00 (PS)

## LEGEND

- △ - Sectional Monument Found
- ▲ - Section Monument Set (5/8" x 24" Iron Rebar w/G.S.S. Cap)
- - 5/8" x 24" Iron Rebar Set w/G.S.S. Cap
- (C) - Calculated
- (CM) - Calculated from measurements
- (PS) - Previous Survey by Joshua Leonard (5/26/1876)
- (GLO) - General Land Office
- P.O.B. - Point of Beginning

## SURVEYOR'S CERTIFICATE:

I hereby certify this plat to be a true, correct and complete representation of the property described hereon, as surveyed under my supervision, this 5th day of April, 2018.



## DESCRIPTION:

A portion of the North Half of the Northeast Quarter of Section 27, Township 20 South, Range 3 West of the 6th Principal Meridian, McPherson County, Kansas described as follows:

Beginning at the Northwest corner of said Northeast Quarter; thence on a NAD 83 Kansas South Zone bearing of South 89°59'03" East on the North line of said Northeast Quarter a distance of 701.30 feet; thence South 38°35'26" East a distance of 352.75 feet; thence South 27°00'03" West a distance of 51.73 feet; thence North 89°02'12" West a distance of 72.07 feet; thence South 64°58'04" West a distance of 176.21 feet; thence South 50°48'04" West a distance of 197.95 feet; thence South 37°58'33" East a distance of 178.52 feet; thence South 50°53'53" East a distance of 131.63 feet; thence South 82°24'08" East a distance of 365.34 feet; thence South 00°57'12" East parallel with the West line of said Northeast Quarter a distance of 526.73 feet to the South line of the North Half of said Northeast Quarter; thence North 89°56'22" West on said South line a distance of 1073.68 feet to the Southwest corner of said North Half; thence North 00°57'12" West on said West line a distance of 1318.21 feet to the point of beginning.

Containing 26.014 Acres and subject to a road right of way easement across the North 50.00 feet thereof, and any other easements or restrictions of record.

## SURVEYOR'S NOTES:

- No reference ties of record for this corner. No previous surveys of record since GLO identifying a monument or measurement for this corner. Reset by single proportionate measurement per GLO measurements
- No reference ties of record for this corner. No previous surveys of record since GLO identifying a monument or measurement for this corner. Duncan Durr, LS 697, shows a calculated position at the even split from NE and SE sections corners on a survey dated 10/3/1997, but no monument was set. His calculated positions falls 5.42 feet South of corner set this survey and does not agree with measurements shown on a previous survey by Joshua Leonard dated 5/26/1876. Reset by single proportionate measurement per previous survey measurements by Joshua Leonard.

Prepared For:

MARK GOERING

Description:

A PORTION OF THE NE 1/4  
SECTION 27, T20S, R3W  
MCPHERSON COUNTY, KANSAS

Prepared By:



Garber Surveying Service, P.A.

HUTCHINSON (Main Office) 2908 North Plum St. 67502 Ph. 620-665-7032 Fax 620-663-7401  
McPHERSON (Branch Office) 115 East Marlin 67460 Ph. 620-241-4441 Fax 620-241-4458  
NEWTON (Branch Office) 511 North Poplar St. 67114 Ph. 316-283-5053 Fax 316-283-5073

Drawn By:

KDZ

Scale: 1"=200'

Date of Field Work: April 2, 2018

Job No:

Checked By:

NDS

Date: 04/05/2018

Sheet 1 of 1 Sheet(s)

G2018-201