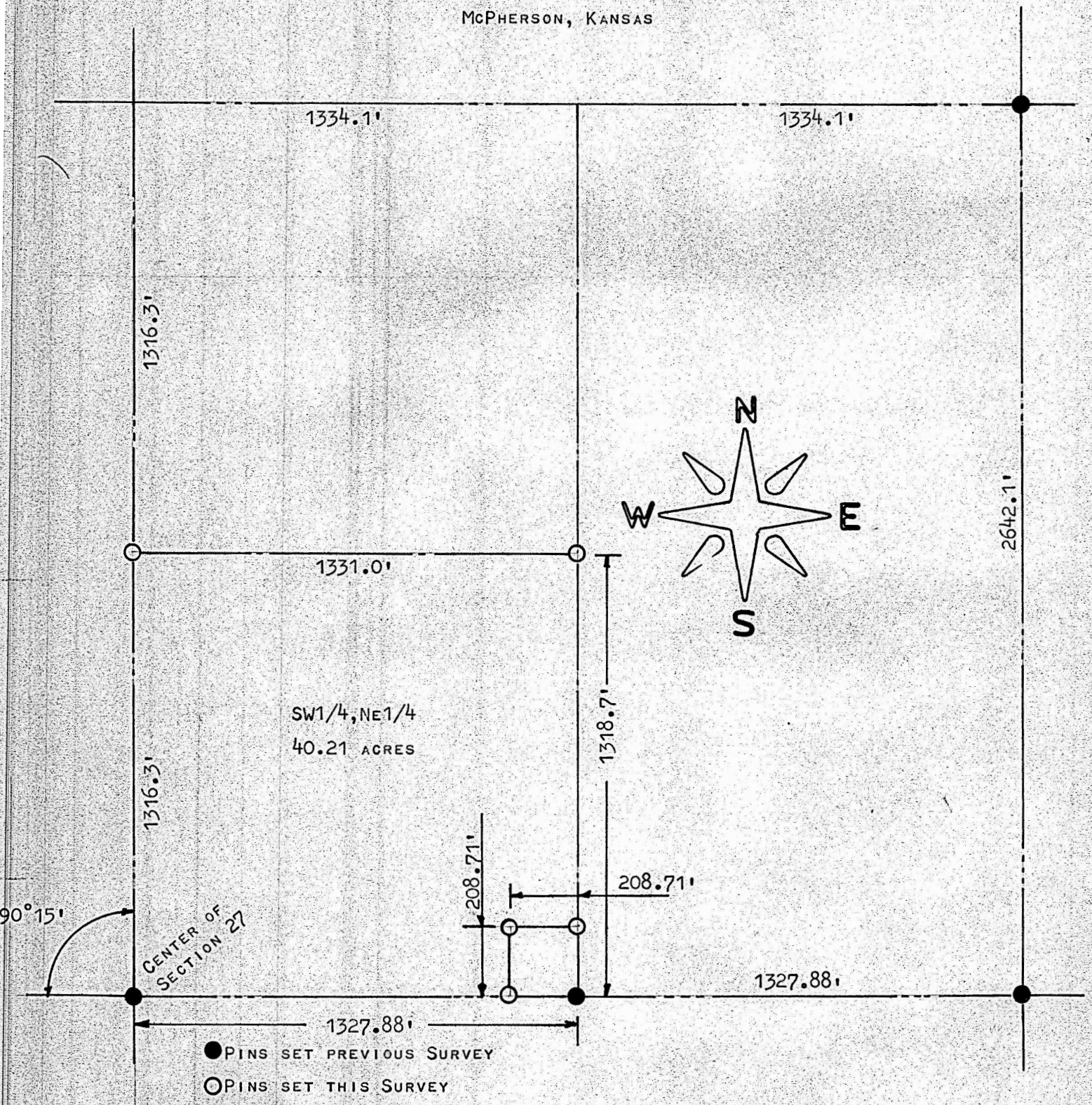


SURVEY SW1/4, NE1/4 SECTION 27, T19S-R4W

McPHERSON, KANSAS



STATE OF KANSAS)
COUNTY OF McPHERSON) ss

I, F.R. RANKIN, COUNTY ENGINEER OF McPHERSON COUNTY DO HEREBY CERTIFY THAT UNDER MY SUPERVISION A SURVEY WAS MADE OF THE SW1/4, NE1/4 OF SECTION 27, T19S-R4W OF THE 6TH P.M. AND THE ABOVE PLAT IS A TRUE EXHIBIT OF SAID SURVEY AS FAR AS IT IS KNOWN TO ME.

SURVEY CALLED FOR BY DARWIN CULVER

SIGNED THIS 5 DAY OF DECEMBER, 1969.

F. R. Rankin
F. R. RANKIN

COUNTY ENGINEER
McPHERSON, KANSAS



MICROFILM