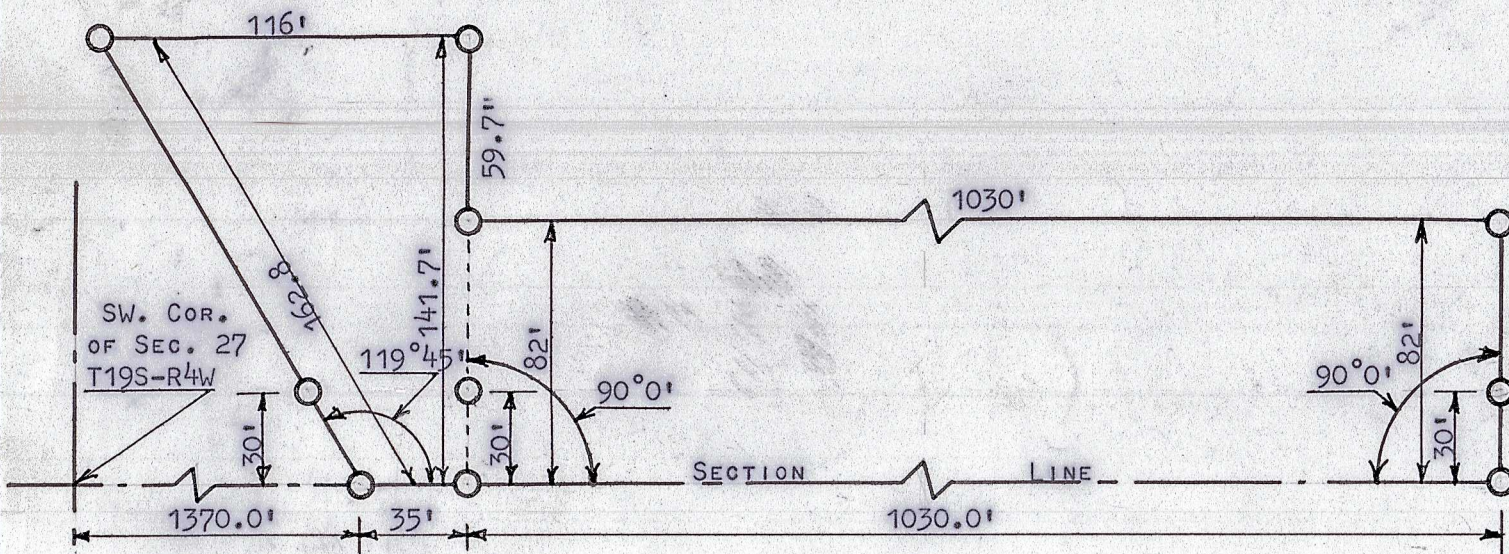


A SURVEY OF A TRACT OF LAND IN THE  
SW.1/4 SECTION 27 T19S-R4W



PIPE SET THIS SURVEY

LAND CONTAIN 2.18<sup>+</sup> ACRES  
LAND FOR TWP. ROAD .73 ACRES

1.45 TOTAL ACRES

STATE OF KANSAS )  
COUNTY OF McPHERSON ) SS

I, FRANCIS R. RANKIN P.E. DO HERBY CERTIFY THAT I DID CAUSE TO BE DONE ON THE 16TH DAY OF MAY 1962, A SURVEY OF A PART OF THE S1/2 SW1/4 SECTION 27, T19S-R4W DESCRIBED AS FOLLOWS:

BEGINNING AT A POINT ON THE SOUTH LINE OF SAID SECTION 1370 FEET EAST OF THE SOUTHWEST CORNER THEREOF: THENCE EAST 1065 FEET ON SECTION LINE:: THENCE NORTH AT AN ANGLE OF 90°0' AND A DISTANCE 82.0 FEET; THENCE WEST AT RIGHT ANGLES 1030.0 FEET THENCE NORTH AT AN ANGLE OF 90°0' AND A DISTANCE 59.7 FEET; THENCE WEST 116.0 FEET TO A POINT; THENCE SOUTHEASTERLY 162.8 FEET TO THE PLACE OF BEGINNING, SAID TRACT CONTAINING 2.18 ACRES MORE OR LESS AND THAT THE ABOVE PLAT IS TRUE AND CORRECT SO FAR AS IT IS KNOWN TO ME.

SURVEY CALLED FOR BY G.H. (SMOKY) BILLUE, McPHERSON, KANSAS

SIGNED THIS 20 DAY OF MAY 1962

*Francis R. Rankin*

FRANCIS R RANKIN  
ENGINEER & SURVEYOR  
McPHERSON, KANSAS

