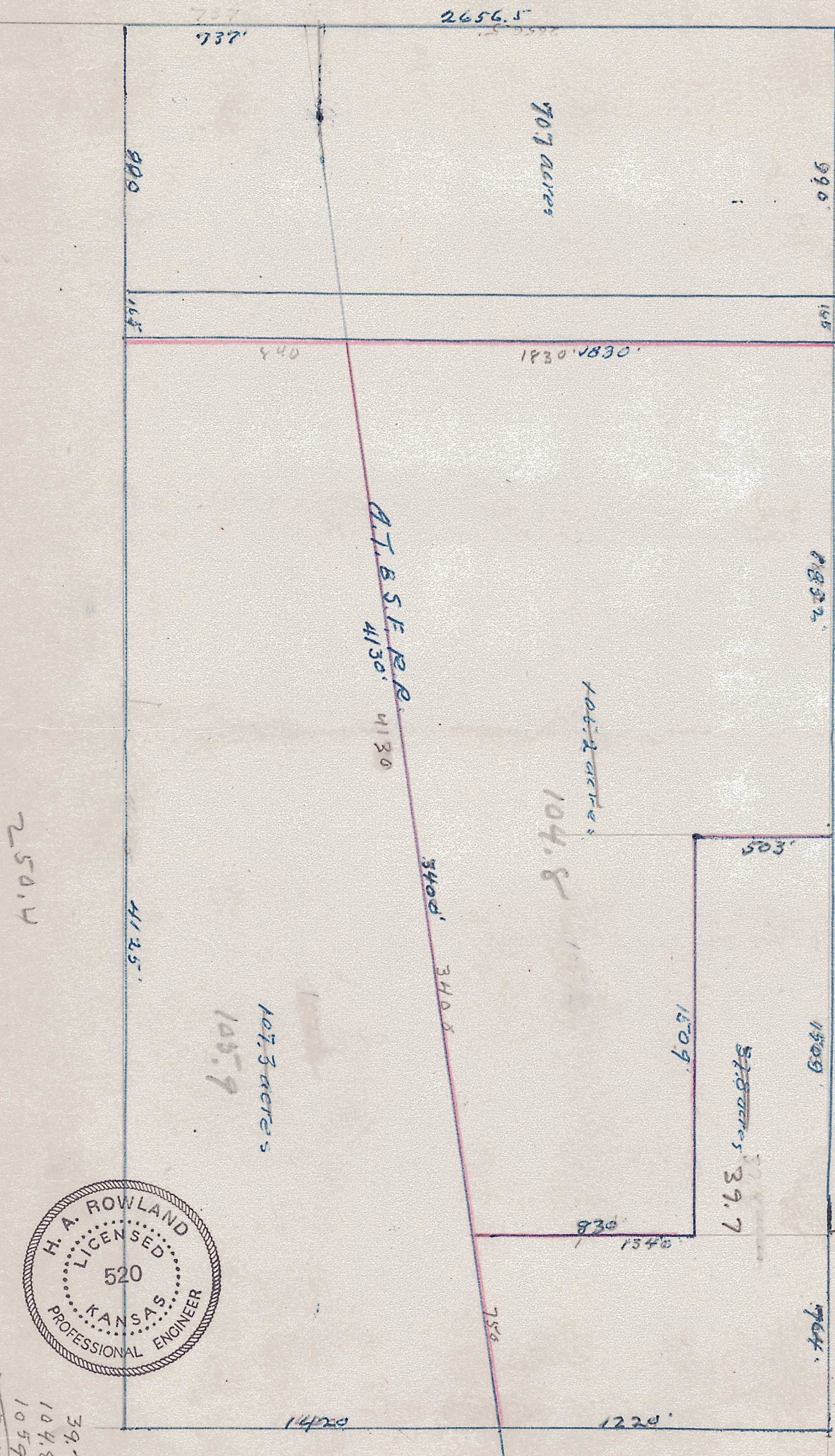


STATE OF KANSAS? McPherson County, ss.,
 THIS IS TO CERTIFY, That the plat made a part of this paper represents a
 tract of land known as the South one-half ($S\frac{1}{2}$) of Section twenty-seven (27)
 in Town Nineteen (19) and of Range Four (4) West of the 6th P. M., and is
 in accordance with a survey made by me.
 McPherson, Kansas, November 25th 1950.

Signed:- H. A. Rowland Professional Engineer.



39.7
 104.8
 105.9
 250.4 acres

Scale 500' = 1"

