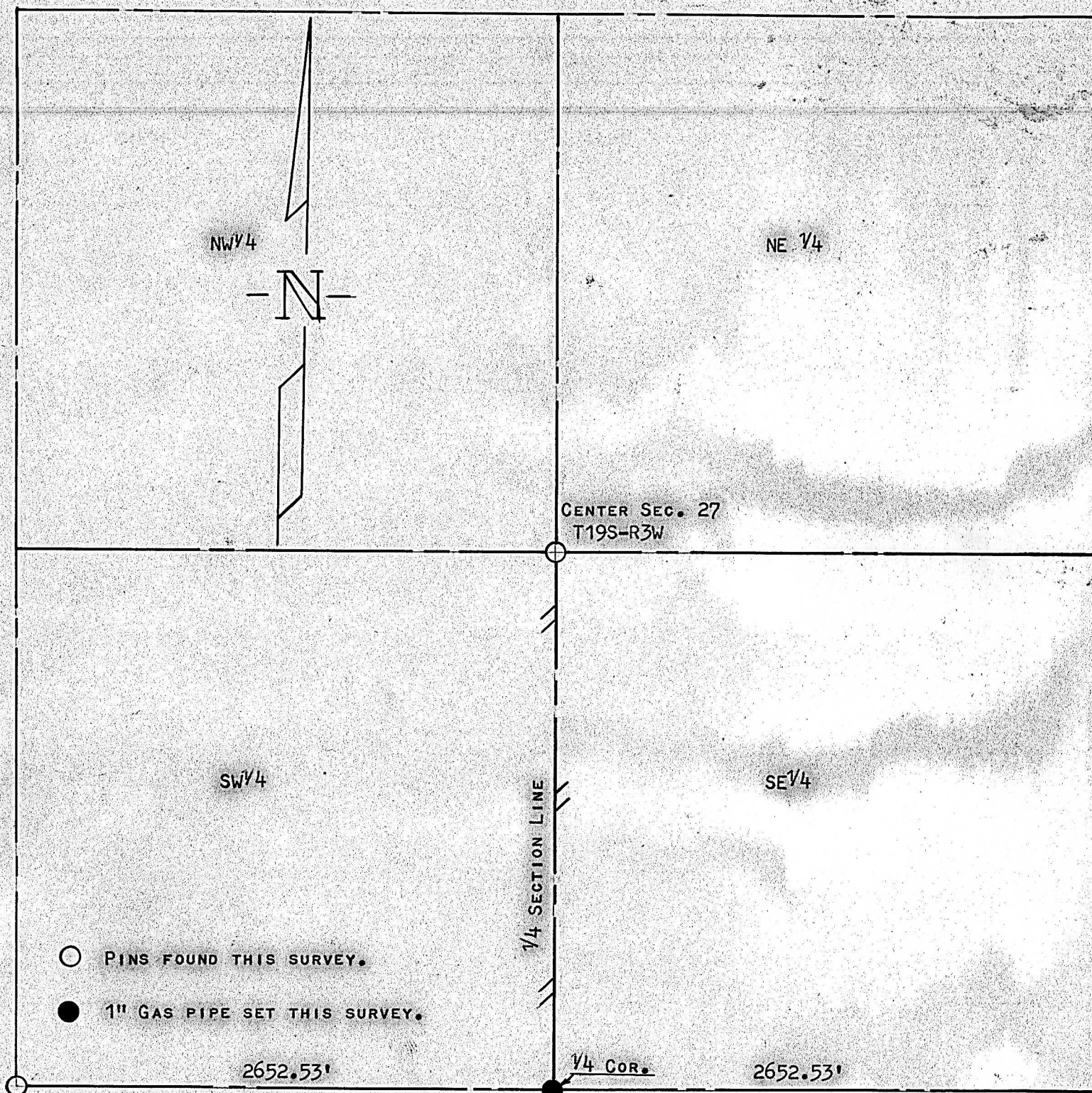


A SURVEY IN THE S¹/₂
OF SECTION 27, T19S-R3W

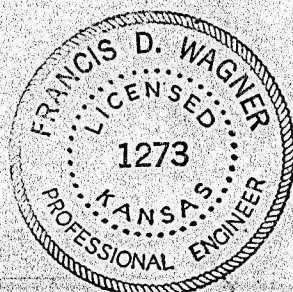


STATE OF KANSAS)
COUNTY OF McPHERSON) SS

I, FRANCIS D. WAGNER, COUNTY ENGINEER OF McPHERSON COUNTY, KANSAS DO
HEREBY CERTIFY THAT I DID CAUSE TO BE DONE ON THE 12TH DAY OF JULY 1961,
A SURVEY TO DETERMINE THE ¹/₄ SECTION LINE BETWEEN THE SW¹/₄ AND SE¹/₄ OF
SECTION 27, T19S, R3W OF THE 6TH P.M. AND THAT THE ACCOMPANYING PLAT IS
A TRUE EXHIBIT OF SAID SURVEY.

Francis D. Wagner

FRANCIS D. WAGNER
COUNTY ENGINEER
McPHERSON COUNTY



MICROFILM