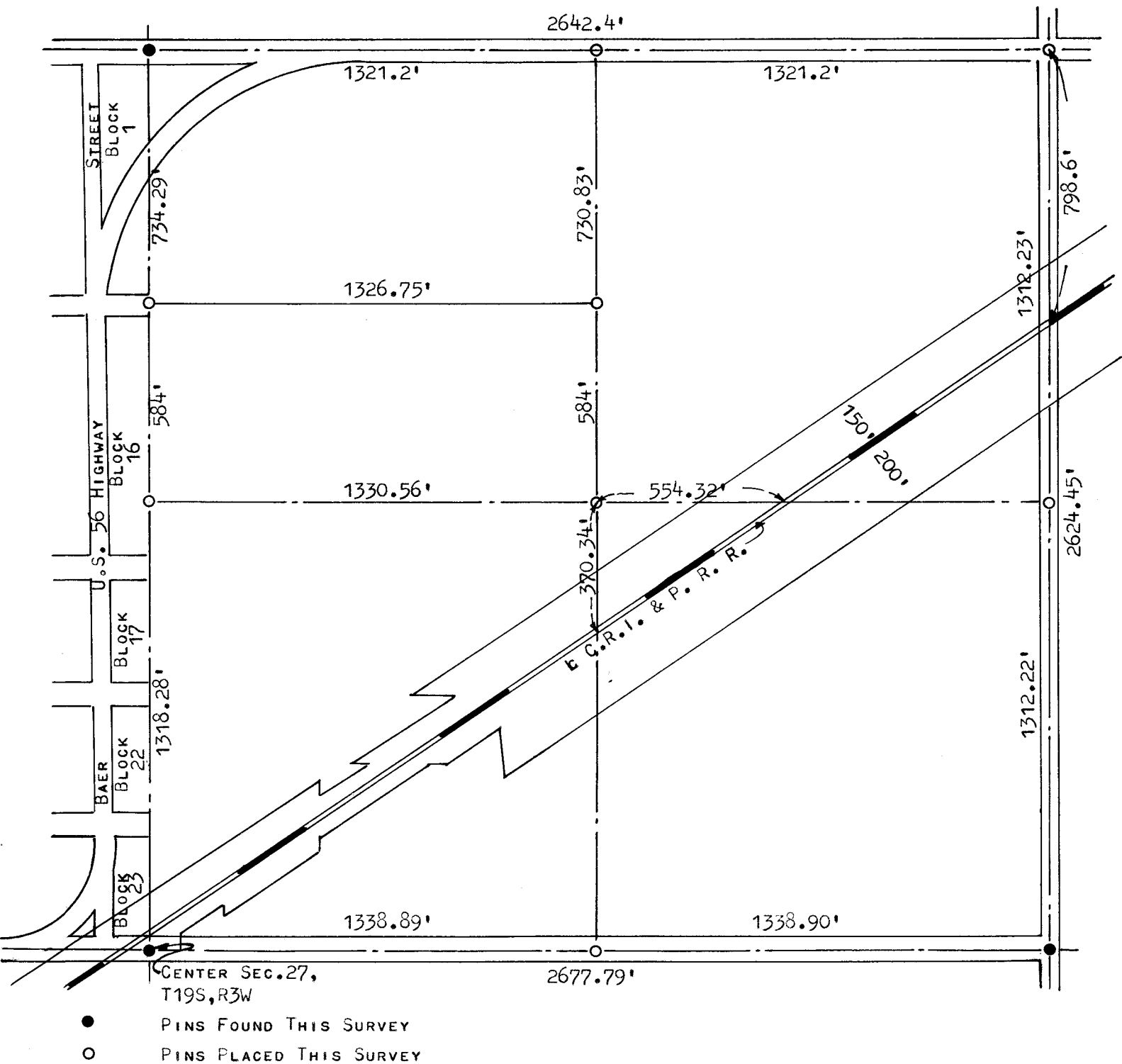


A SURVEY OF THE $\text{NE}\frac{1}{4}$
SECTION 27, T19S, R3W



STATE OF KANSAS) SS
COUNTY OF McPHERSON)

I FRANCIS D. WAGNER, COUNTY ENGINEER McPHERSON COUNTY, KANSAS DO HEREBY
CERTIFY THAT I DID CAUSE TO BE DONE ON THE 8TH DAY OF DECEMBER, 1959 A
SURVEY OF A TRACT OF LAND IN THE $\text{NE}\frac{1}{4}$ OF SECTION 27, T19S, R3W AND
THAT THE ACCOMPANYING PLAT IS A TRUE EXHIBIT OF SAID SURVEY.

Francis D. Wagner

FRANCIS D. WAGNER
COUNTY ENGINEER
McPHERSON COUNTY

10 DECEMBER, 1959