

Main Office
2908 North Plum Street
Hutchinson, KS 67502
Office: (620) 665-7032
Fax: (620) 663-7401



Garber Surveying Service, P.A.

Branch Offices
511 North Poplar Street
Newton, KS 67114
Office: (316) 283 - 5053
Fax: (316) 283 - 5073

115 East Marlin, Suite 102
McPherson, KS. 67460
Office: (620) 241-4441
Fax: (620) 241-4458

EXHIBIT "B"

SURVEY FOR: JKC, LLC
OWNER: JKC, LLC

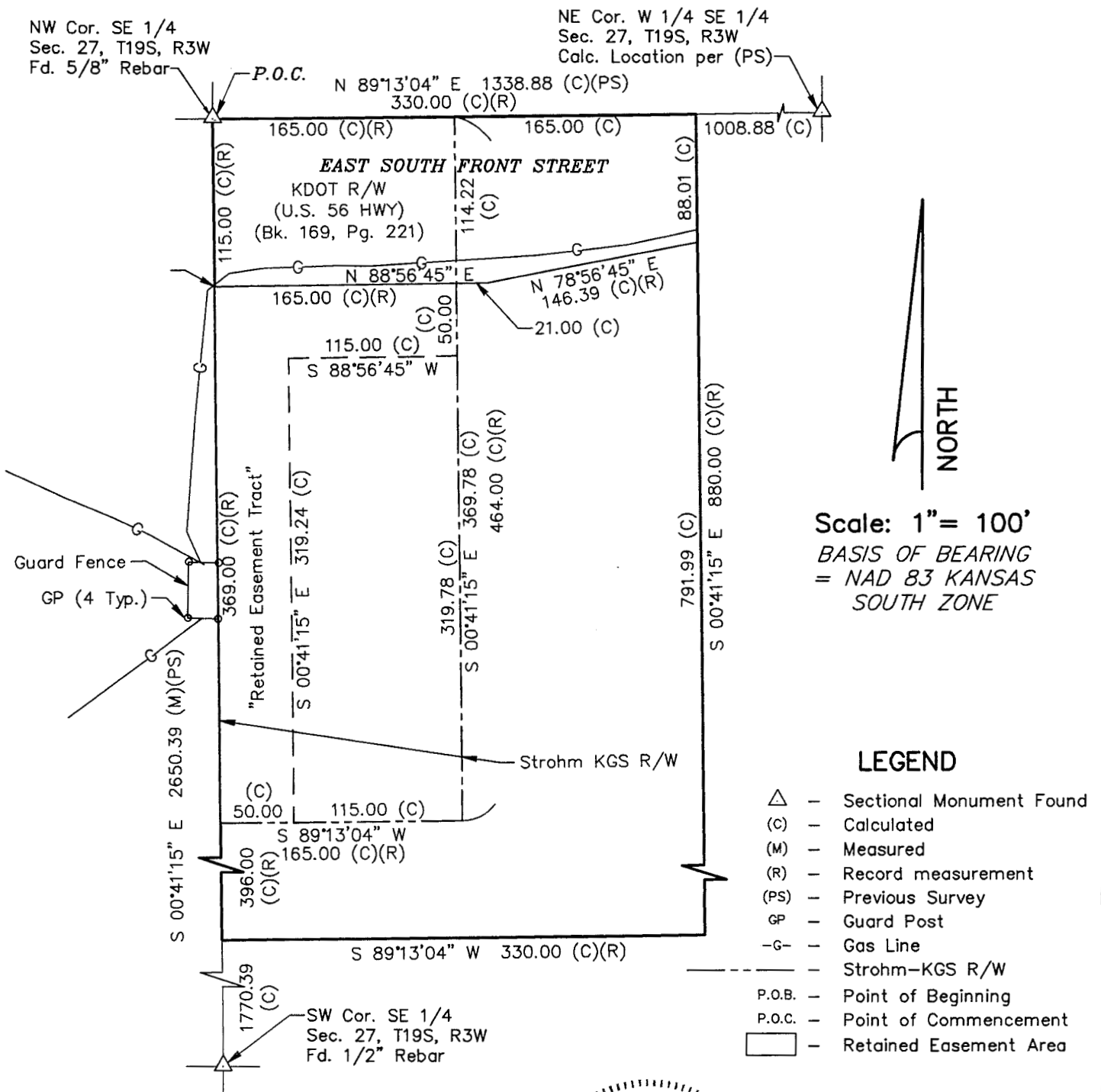
Project No. G2019-493

"RETAINED EASEMENT TRACT" DESCRIPTION:

A portion of the Southeast Quarter of Section 27, Township 19 South, Range 3 West of the 6th Principal Meridian, McPherson County, Kansas described as follows:

Commencing at the Northwest corner of said Southeast Quarter; thence on a NAD 83 Kansas South Zone bearing of South 00°41'15" East on the West line of said Southeast Quarter a distance of 115.00 feet to a point on the South Right of Way line of U.S. 56 Highway as recorded in Book 169, Page 221 at the McPherson County Register of Deeds Office, being the point of beginning; thence North 88°56'45" East on said Right of Way line a distance of 165.00 feet; thence South 00°41'15" East parallel with said West line a distance of 50.00 feet; thence South 88°56'45" West parallel with said Right of Way line a distance of 115.00 feet; thence South 00°41'15" East parallel with said West line a distance of 319.24 feet; thence South 89°13'04" West parallel with the North line of said Southeast Quarter a distance of 50.00 feet to said West line; thence North 00°41'15" West on said West line a distance of 369.00 feet to the point of beginning.

Containing 0.556 Acre and subject to any easements or restrictions of record.



Scale: 1" = 100'
BASIS OF BEARING
= NAD 83 KANSAS
SOUTH ZONE

LEGEND

- △ - Sectional Monument Found
- (C) - Calculated
- (M) - Measured
- (R) - Record measurement
- (PS) - Previous Survey
- GP - Guard Post
- G- - Gas Line
- - Strohm-KGS R/W
- P.O.B. - Point of Beginning
- P.O.C. - Point of Commencement
- - Retained Easement Area

DATE OF FIELD WORK: August 12, 2019

Copyright © 2019 Garber Surveying Service, P.A.

