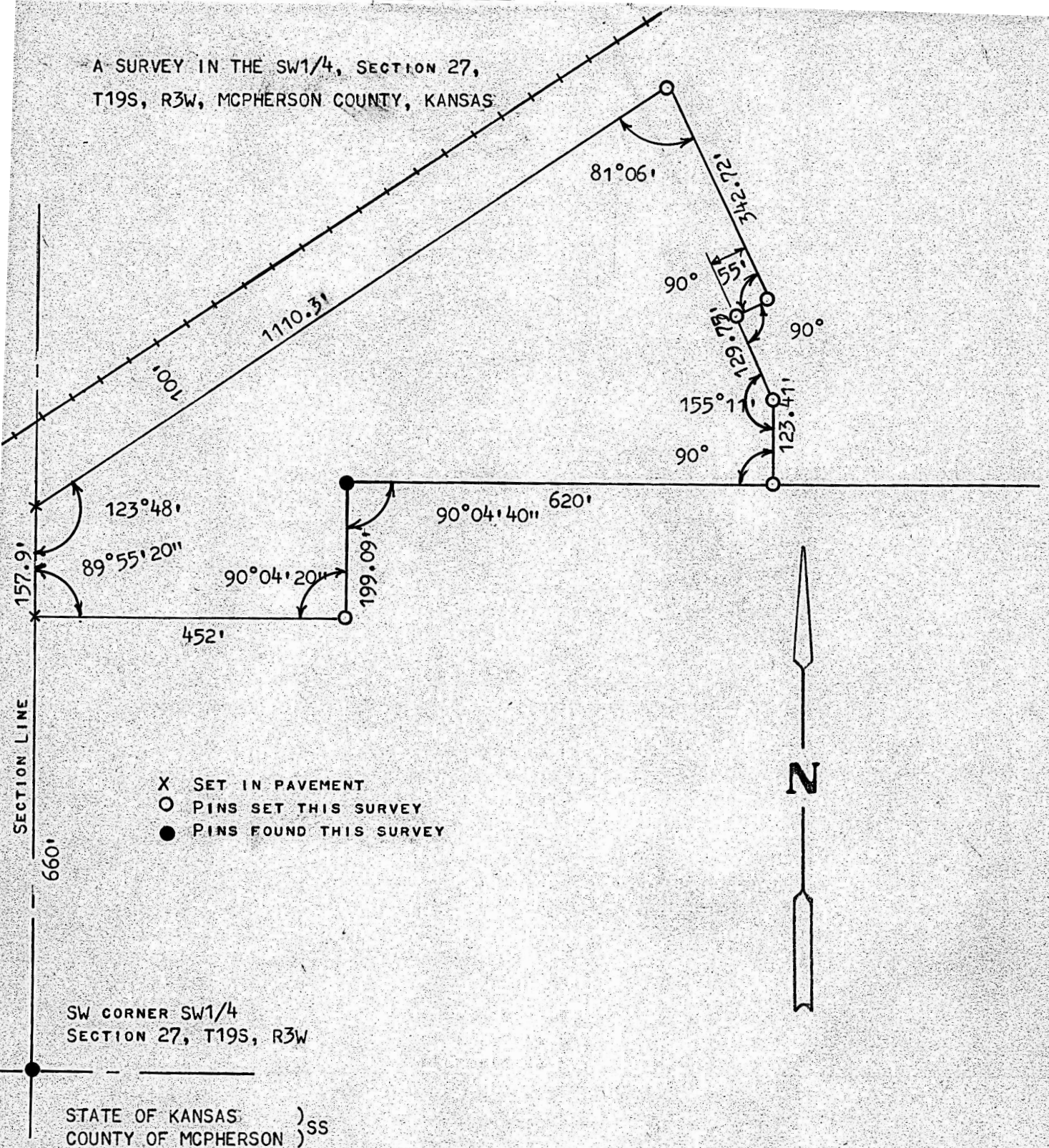


A SURVEY IN THE SW1/4, SECTION 27,  
T19S, R3W, MCPHERSON COUNTY, KANSAS



STATE OF KANSAS )  
COUNTY OF MCPHERSON )SS

I, MELVIN FERGUSON, PROFESSIONAL ENGINEER OF THE STATE OF KANSAS, DO HEREBY CERTIFY THAT UNDER MY SUPERVISION A SURVEY WAS MADE IN THE SW1/4, OF SECTION 27, T19S, R3W OF THE 6TH P.M. AND DESCRIBED AS FOLLOWS

BEGINNING AT A POINT 660 FEET NORTH OF THE SW CORNER OF SAID SW1/4, SECTION 27, T19S R3W; THENCE EAST, AT AN INTERIOR ANGLE OF 89°55'20", A DISTANCE OF 452 FEET, THENCE NORTH, AT AN INTERIOR ANGLE OF 90°04'20", A DISTANCE OF 199.09 FEET, THENCE EAST, AT AN EXTERIOR ANGLE OF 90°04'40" A DISTANCE OF 620 FEET; THENCE NORTH, AT AN INTERIOR ANGLE OF 90°0', A DISTANCE OF 123.41 FEET; THENCE NORTH-WESTERLY, AT AN INTERIOR ANGLE OF 155°11', A DISTANCE OF 129.75 FEET; THENCE NORTHEASTERLY, AT AN EXTERIOR ANGLE OF 90°0' A DISTANCE OF 55.0 FEET; THENCE NORTHWESTERLY, AT AN INTERIOR ANGLE OF 90°0', A DISTANCE OF 342.72 FEET, AND TO THE SOUTHERLY RIGHT OF WAY OF RAILROAD; THENCE SOUTHWESTERLY ALONG RIGHT OF WAY AT AN INTERIOR ANGLE OF 81°06' A DISTANCE OF 1110.3 FEET, AND TO THE SECTION LINE; THENCE SOUTH, AT AN INTERIOR ANGLE OF 123°48', A DISTANCE OF 157.9 FEET AND TO PLACE OF BEGINNING, SAID TRACT OF LAND CONTAINS 9.17 ACRES MORE OR LESS AND THAT THE ABOVE PLAT IS A TRUE EXHIBIT OF SAID SURVEY AS FAR AS IT IS KNOWN TO ME.

SURVEY CALLED FOR BY KENT HALL

SIGNED THIS 11th DAY OF DECEMBER, 1974

Melvin Ferguson  
MELVIN FERGUSON  
PROFESSIONAL ENGINEER  
MCPHERSON, KANSAS

