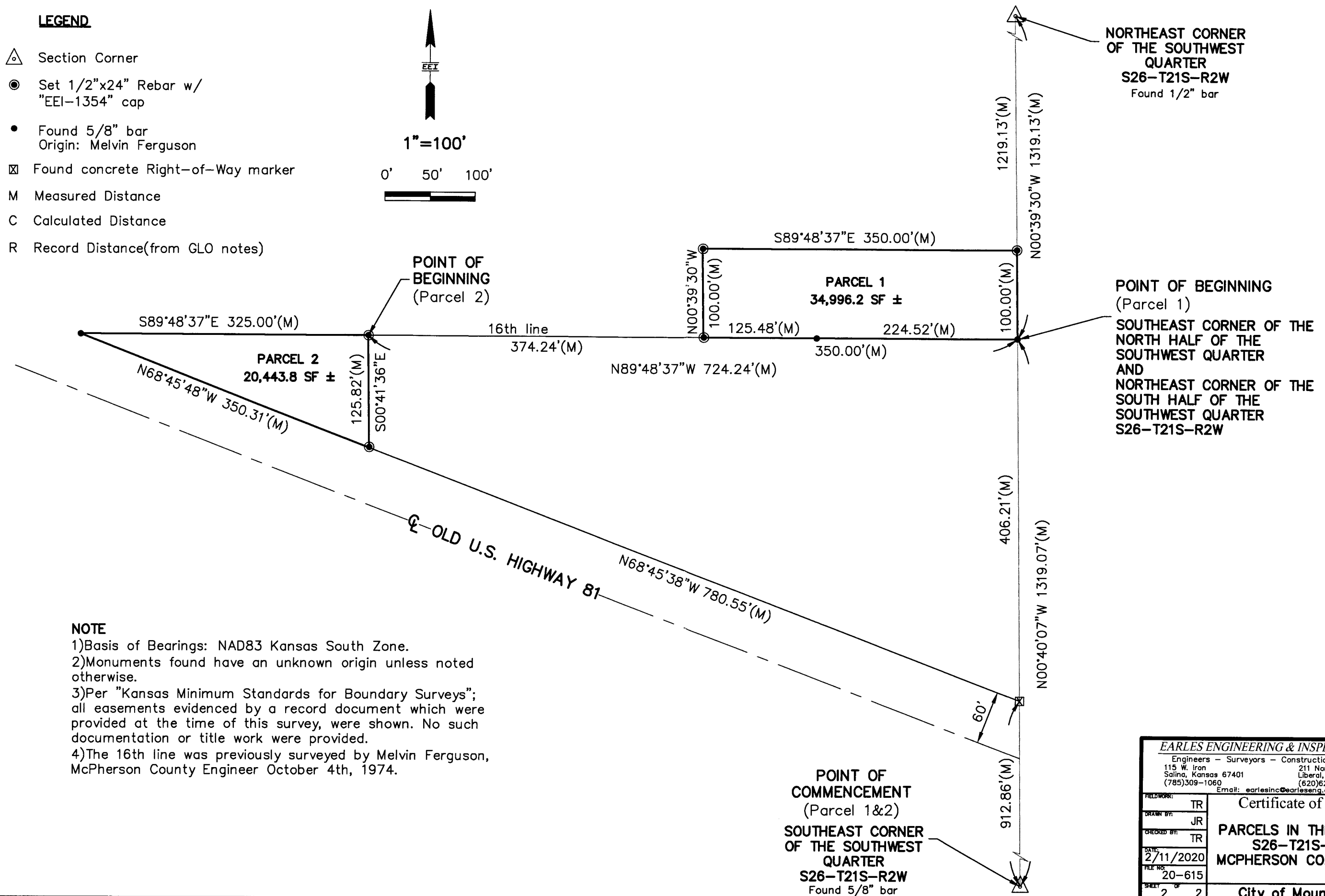
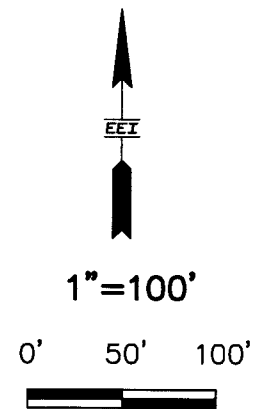


- △ Section Corner
- Set 1/2"x24" Rebar w/"EEI-1354" cap
- Found 5/8" bar
Origin: Melvin Ferguson
- ☒ Found concrete Right-of-Way marker
- M Measured Distance
- C Calculated Distance
- R Record Distance(from GLO notes)



EARLES ENGINEERING & INSPECTION, INC.
Engineers - Surveyors - Construction Inspectors
115 W. Iron 211 North Kansas
Salina, Kansas 67401 Liberal, Kansas 67901
(785)309-1060 (620)626-8912
Email: earlesinc@earleseng.com

FIELD WORK:	TR	Email: earlesinc@earleseng.com Certificate of Survey PARCELS IN THE SW4 OF S26-T21S-R2W MCPHERSON CO., KANSAS
DRAWN BY:	JR	
CHECKED BY:	TR	
DATE:	2/11/2020	
FILE NO:	20-615	
SHEET	2 OF 2	City of Moundridge