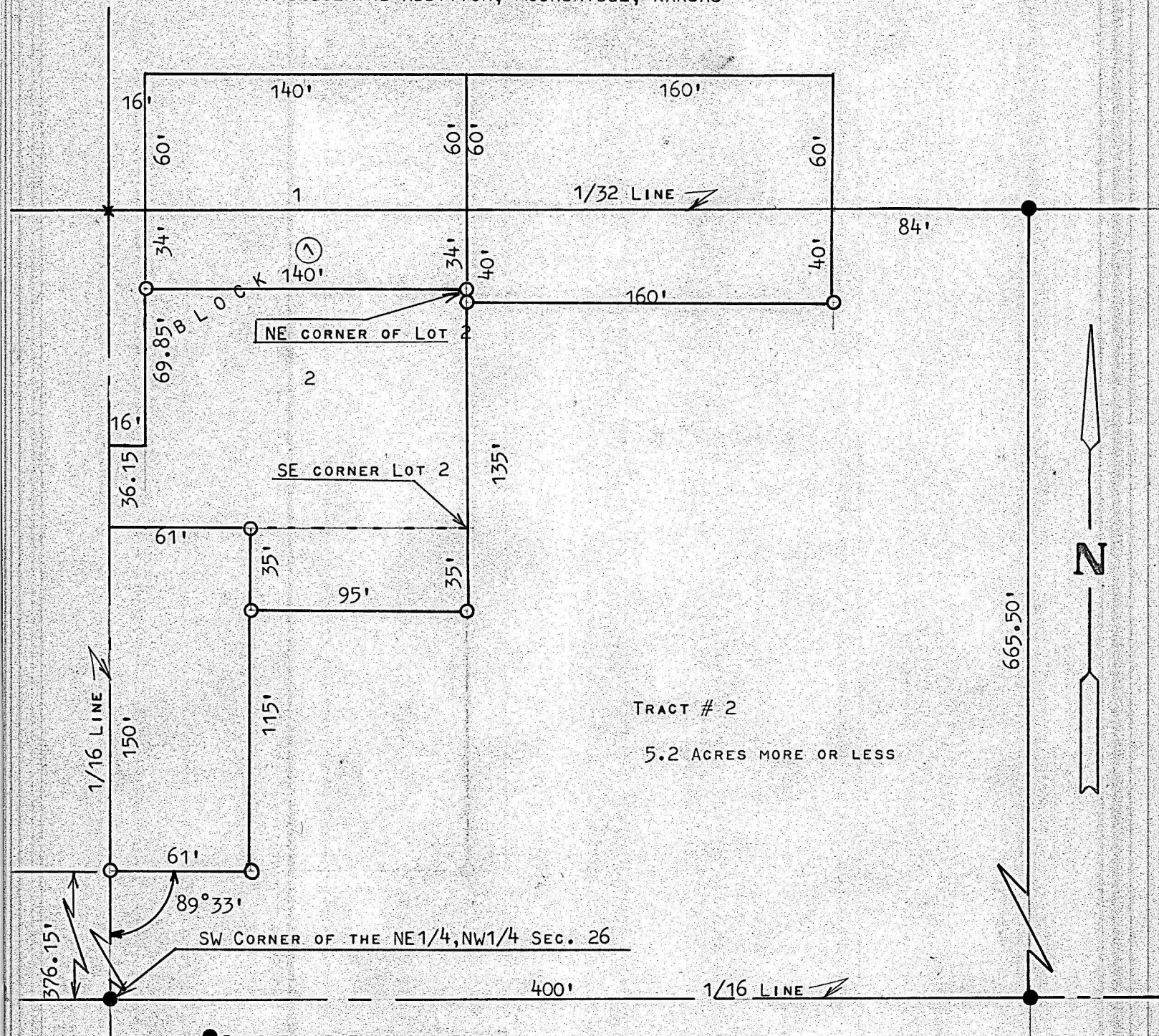


A SURVEY IN THE NE1/4,NW1/4, SECTION 26, T21S-R2W
AND GOERING ADDITION, MOUNDRIDGE, KANSAS



● PINS FOUND THIS SURVEY

○ PINS SET THIS SURVEY

STATE OF KANSAS)
COUNTY OF MCPHERSON) SS

I, FRANCIS RANKIN, PROFESSIONAL ENGINEER OF THE STATE OF KANSAS DO HEREBY CERTIFY THAT UNDER MY SUPERVISION A SURVEY WAS MADE IN THE NW1/4, SECTION 26 T21S R2W OF THE 6TH P.M. AND DESCRIBED AS FOLLOWS; LOT 2, BLOCK 1, GOERING ADDITION TO THE CITY OF MOUNDRIDGE, KANSAS, AND A TRACT OF LAND AS FOLLOWS, BEGINNING AT THE SOUTHEAST CORNER OF LOT 2, BLOCK 1, GOERING ADDITION, MOUNDRIDGE; THENCE WEST ON LOT LINE 95 FEET; THENCE SOUTH 35 FEET; THENCE EAST 95 FEET; THENCE NORTH 35 FEET TO PLACE OF BEGINNING.

TRACT # 2, BEGINNING AT THE SW CORNER OF THE NE1/4,NW1/4, OF SAID SECTION 26, T21S-R2W; THENCE EAST ON 1/16 LINE 400 FEET; THENCE NORTH PARALLEL WITH WEST 1/16 LINE 665.50 FEET TO THE 1/32 LINE; THENCE WEST ON 1/32 LINE 84 FEET; THENCE SOUTH PARALLEL WITH WEST 1/16 LINE 40 FEET; THENCE WEST PARALLEL WITH 1/32 LINE 160 FEET TO A POINT ON THE EAST LOT LINE AND 6 FEET SOUTH OF THE NE CORNER OF LOT 2, BLOCK 1 GOERING ADDITION, MOUNDRIDGE; THENCE SOUTH ON LOT LINE 135 FEET; THENCE WEST PARALLEL WITH SOUTH LOT LINE OF SAID LOT 2, 95 FEET; THENCE SOUTH PARALLEL WITH 1/16 LINE 115 FEET; THENCE WEST PARALLEL WITH SOUTH LOT LINE OF SAID LOT 2, 61 FEET AND TO THE 1/16 LINE; THENCE SOUTH ON 1/16 LINE 376.15 FEET TO PLACE OF BEGINNING, SAID TRACT OF LAND CONTAINS 5.2 ACRES MORE OR LESS, AND THAT THE ACCOMPANYING PLAT IS A TRUE EXHIBIT OF SAID SURVEY AS FAR AS IT IS KNOWN TO ME.

SURVEY CALLED FOR BY ELMER GOERING

SIGNED THIS 17 DAY OF SEPTEMBER, 1968



Francis Rankin
FRANCIS RANKIN
PROFESSIONAL ENGINEER
MCPHERSON, KANSAS

MICROFILM