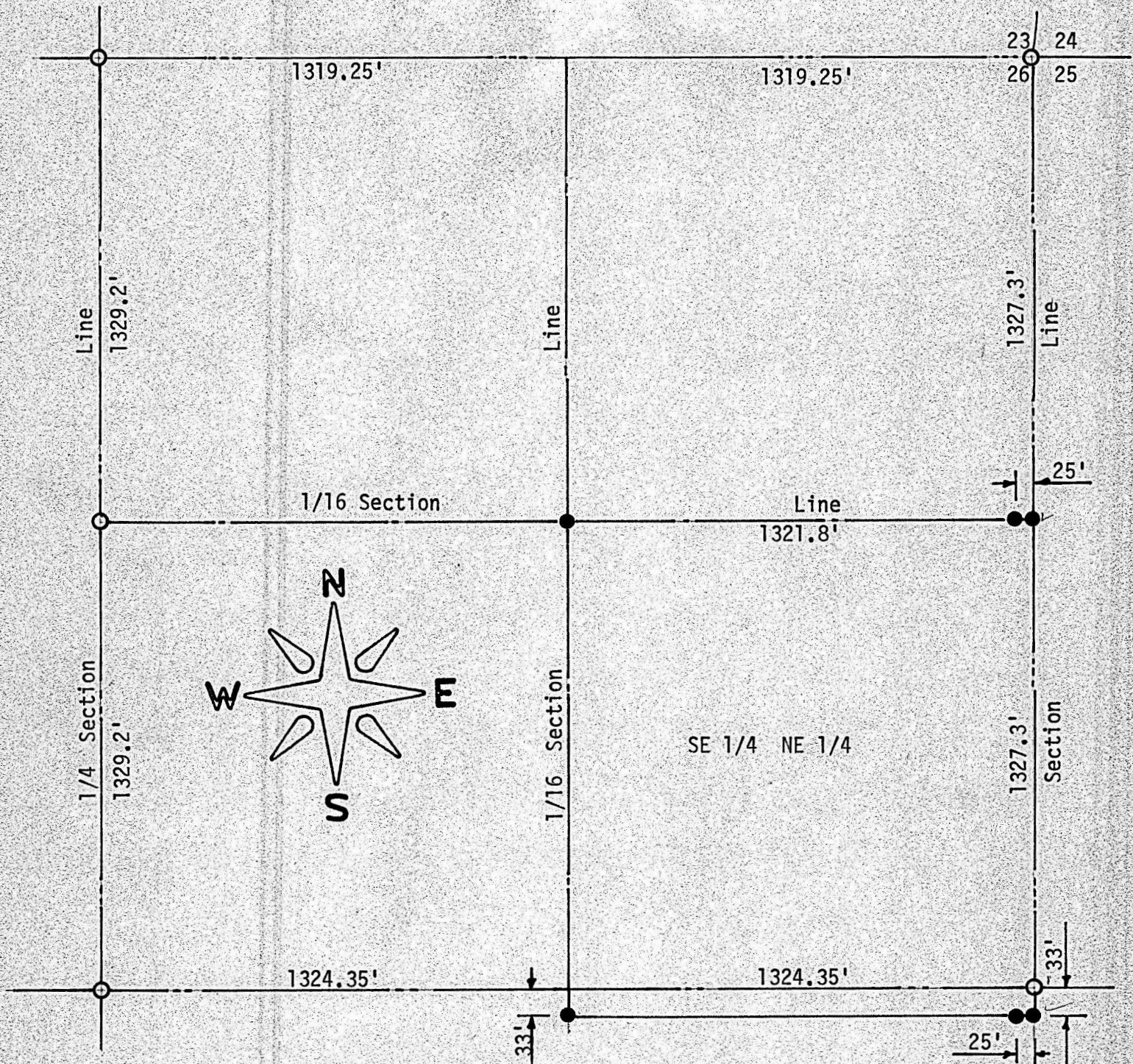


SURVEY OF THE SE 1/4, NE 1/4  
SECTION 26, TWP. 21S, RGE. 2W  
MC PHERSON, KANSAS



- Pins Set Previous Survey
- Pins Set This Survey

State of Kansas )  
County of McPherson ) SS

I, F. R. Rankin, County Engineer of McPherson County, Kansas, do hereby certify that under my supervision a survey was made of the SE 1/4, NW 1/4 and the North 33 feet of the NE 1/4, SE 1/4 Section 26, T21S, R2W of the 6th P.M. and above plat is a true exhibit of said survey as far as it is known to me.

Survey requested by Merlin D. Kaufman

Signed this 16 day October, 1972

*F. R. Rankin*  
F. R. Rankin, P. E.  
County Engineer  
McPherson, Kansas

