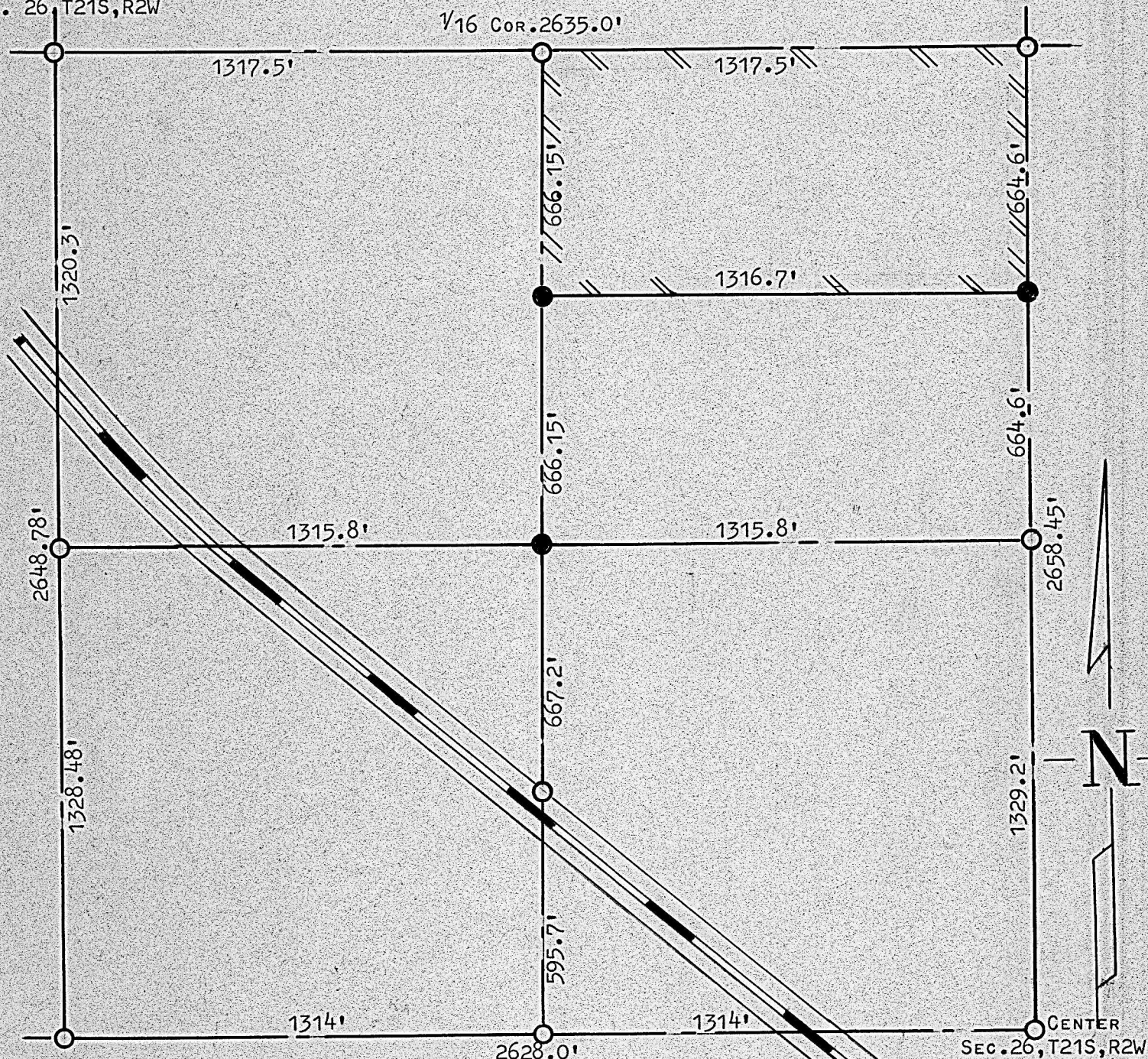


A SURVEY OF THE N<sup>1</sup>/<sub>2</sub> NE<sup>1</sup>/<sub>4</sub> NW<sup>1</sup>/<sub>4</sub>  
SECTION 26, T21S, R2W

W CORNER  
SEC. 26, T21S, R2W

1/16 COR. 2635.0'



- PINS PLACED THIS SURVEY
- PINS FOUND THIS SURVEY

STATE OF KANSAS ) SS  
COUNTY OF McPHERSON)

I, FRANCIS D. WAGNER, COUNTY ENGINEER, of McPHERSON COUNTY, KANSAS  
DO HERBY CERTIFY THAT I DID CAUSE TO BE DONE ON THE 2ND DAY OF  
JANUARY, 1961, A SURVEY OF THE FOLLOWING DESCRIBED TRACT OF LAND.

ALL THAT PART OF THE N<sup>1</sup>/<sub>2</sub>, NE<sup>1</sup>/<sub>4</sub>, NW<sup>1</sup>/<sub>4</sub> SECTION 26, T21S, R2W OF THE  
SIXTH P.M. AND THAT THE ACCOMPANYING PLAT IS A TRUE EXHIBIT OF  
SAID SURVEY.

*Francis D. Wagner*

FRANCIS D. WAGNER  
COUNTY ENGINEER  
McPHERSON COUNTY

JANUARY 3, 1961



MICROFILM