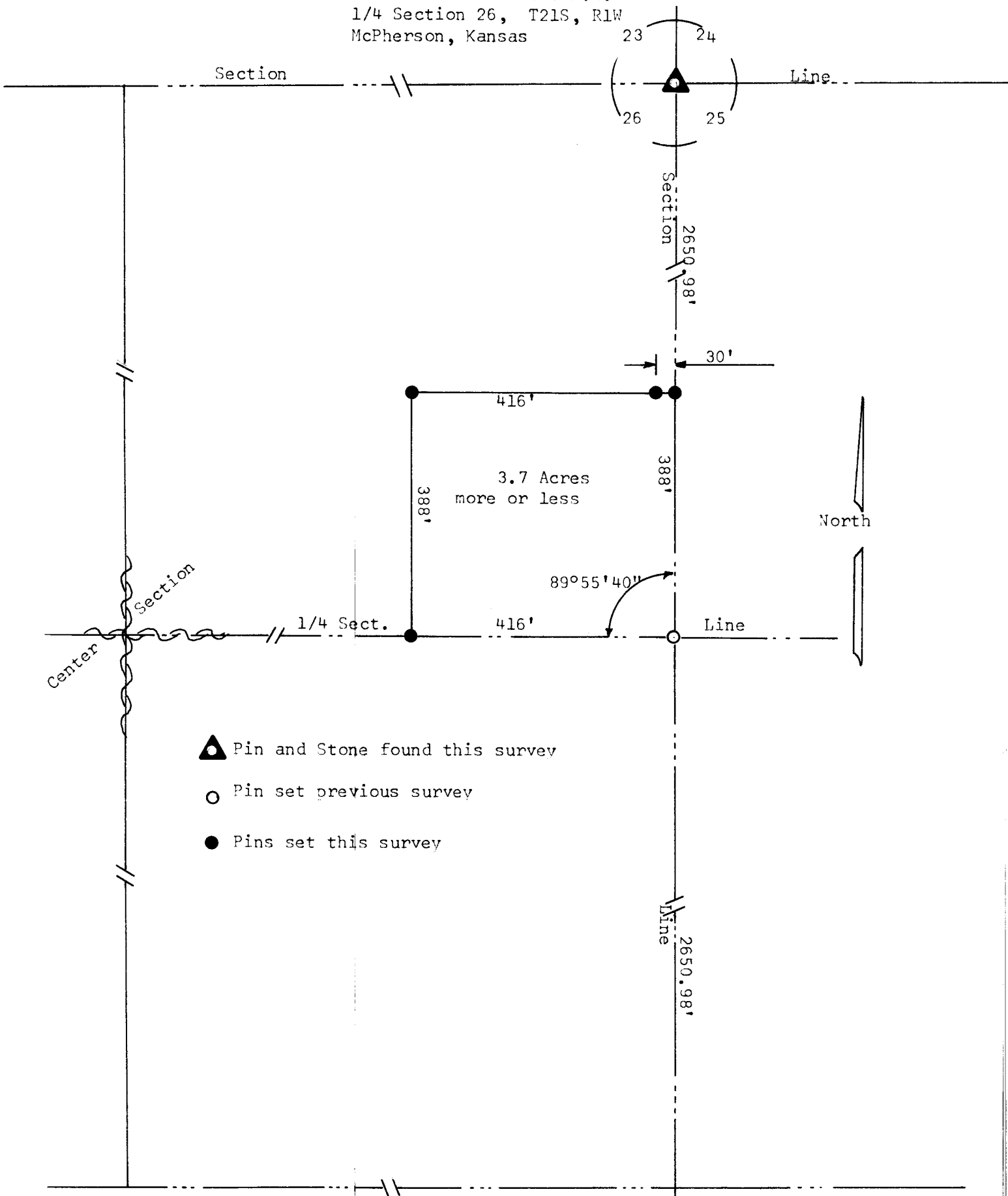


Tract of land in the N.E.  
1/4 Section 26, T21S, R1W  
McPherson, Kansas



- ▲ Pin and Stone found this survey
- Pin set previous survey
- Pins set this survey

State of Kansas )  
County of McPherson ) S.S.

I, Francis Rankin, Professional Engineer of the State of Kansas do hereby certify that under my supervision a survey was made in the NE. 1/4 Section 26, T21S, R1W of the 6th. P.M. and described as follows

Beginning at the 1/4 corner between said said sections 25 and 26, thence North 388' feet, thence West 416' feet, thence South 388' feet, thence East 416' feet on the 1/4 section line to the point of beginning. The land herein described contains 3.7 acres more or less, and the above plat is a true exhibit of said survey as far as it is known to me.

Signed this 6 day of November 1967

Survey called for by Menno Dirksen



Francis Rankin  
Professional Engineer  
McPherson, Kansas

MICROFILM