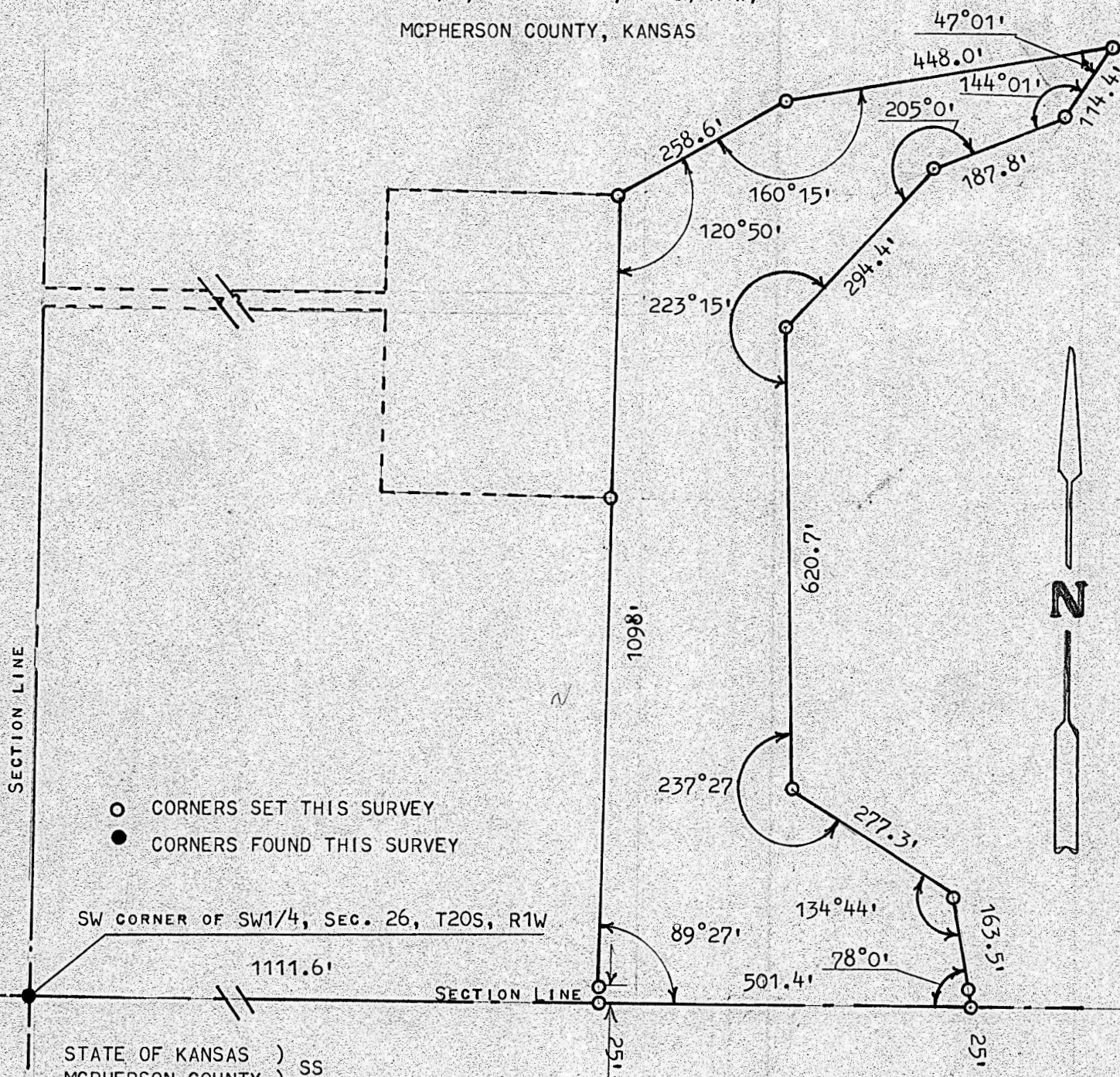


A SURVEY OF A TRACT OF LAND IN THE
SW1/4, SECTION 26, T20S, R1W,
MCIPHERSON COUNTY, KANSAS



I, MELVIN FERGUSON, PROFESSIONAL ENGINEER OF THE STATE OF KANSAS DO HEREBY CERTIFY THAT UNDER MY SUPERVISION A SURVEY WAS MADE OF A TRACT OF LAND IN THE SW1/4, SECTION 26, T20S, R1W OF THE 6TH P.M. AND DESCRIBED AS FOLLOWS:

BEGINNING 1111.6 FEET EAST OF THE SW CORNER OF SAID SW1/4, SECTION 26, T20S, R1W; THENCE INTERIOR ANGLE NORTH ~~OF~~ 89°27' AND A DISTANCE OF 1098 FEET; THENCE NORTHEASTERLY INTERIOR ANGLE OF 120°50' AND A DISTANCE OF 258.6 FEET; THENCE EAST NORTHEAST INTERIOR ANGLE OF 160°15' AND A DISTANCE OF 448 FEET; THENCE SOUTHWESTERLY INTERIOR ANGLE OF 47°01' AND A DISTANCE OF 114.4 FEET; THENCE WEST SOUTHWESTERLY INTERIOR ANGLE OF 144°01' AND A DISTANCE OF 187.8 FEET; THENCE SOUTHWESTERLY INTERIOR ANGLE OF 205°0' AND A DISTANCE OF 294.4 FEET; THENCE SOUTHERLY INTERIOR ANGLE OF 223°15' AND A DISTANCE OF 620.7 FEET; THENCE SOUTHEASTERLY INTERIOR ANGLE OF 237°27' AND A DISTANCE OF 277.3 FEET; THENCE SOUTHERLY INTERIOR ANGLE OF 134°44' AND A DISTANCE OF 163.5 FEET AND TO SECTION LINE; THENCE WEST ON SECTION LINE INTERIOR ANGLE OF 78°0' AND A DISTANCE OF 501.4' FEET AND TO PLACE OF BEGINNING SAID TRACT OF LAND CONTAINS 8.9 ACRES MORE OR LESS, AND THAT THE ABOVE PLAT IS A TRUE EXHIBIT OF SAID SURVEY AS FAR AS IT IS KNOWN TO ME.

SURVEY CALLED FOR BY HARVEY SCHMIDT

SIGNED THIS 24th DAY OF MAY, 1977

Melvin Ferguson
MELVIN FERGUSON
PROFESSIONAL ENGINEER
MCIPHERSON, KANSAS



MICROFILM