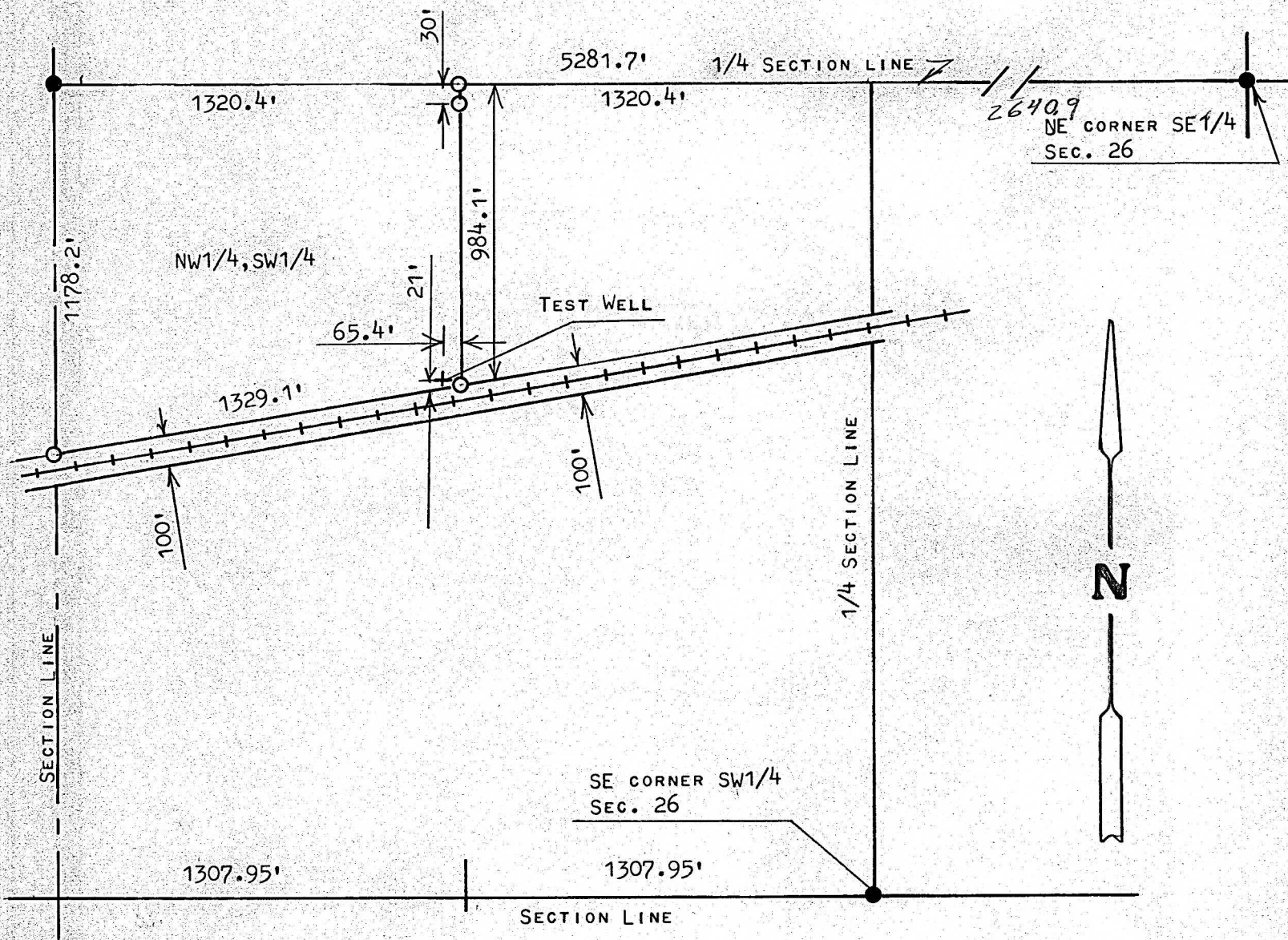


A SURVEY IN THE NW1/4, SW1/4, SECTION 26,  
T19S, R4W, MCPHERSON COUNTY, KANSAS



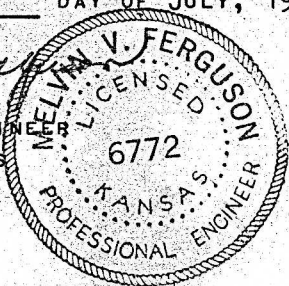
- PINS SET THIS SURVEY
- PINS FOUND THIS SURVEY

I, MELVIN FERGUSON, PROFESSIONAL ENGINEER OF THE STATE OF KANSAS DO HEREBY CERTIFY THAT UNDER MY SUPERVISION A SURVEY WAS MADE OF A TRACT OF LAND LYING NORTH OF THE RAILROAD RIGHT OF WAY IN THE NW1/4, SW1/4, SECTION 26, T19S, R4W OF THE 6TH P.M. SAID TRACT OF LAND CONTAINS 32.7 ACRES MORE OR LESS, AND THAT THE ABOVE PLAT IS A TRUE EXHIBIT OF SAID SURVEY AS FAR AS IT IS KNOWN TO ME.

SURVEY CALLED FOR BY LARRY HILL ( N.C.R.A. )

SIGNED THIS 28<sup>th</sup> DAY OF JULY, 1975

*Melvin Ferguson*  
MELVIN FERGUSON  
PROFESSIONAL ENGINEER  
MCPHERSON, KANSAS



**MICROFILM**