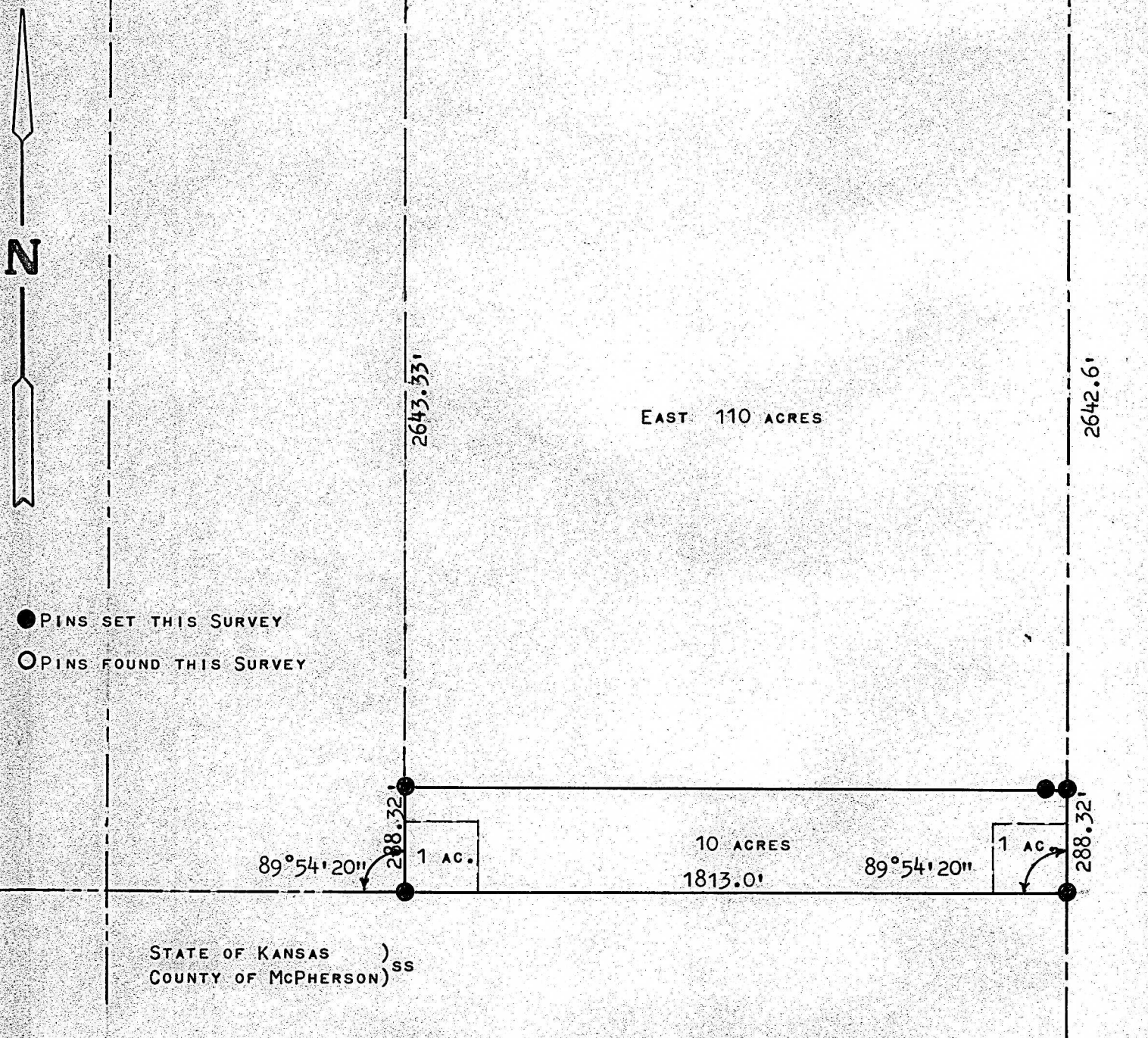


A SURVEY IN THE NE1/4 SECTION 26,
T19S, R4W
2635.77'



STATE OF KANSAS)
COUNTY OF McPHERSON) SS

I, MELVIN FERGUSON, COUNTY ENGINEER OF McPHERSON COUNTY, KANSAS, DO HEREBY CERTIFY THAT UNDER MY SUPERVISION A SURVEY WAS MADE OF THE SOUTH 12 ACRES OF THE EAST 110 ACRES OF THE NE1/4 OF SECTION 26, T19S-R4W OF THE 6TH P.M., EXCEPT 1 ACRE IN THE SOUTHEAST CORNER AND 1 ACRE IN THE SOUTHWEST CORNER AND THAT THE ABOVE PLAT IS A TRUE EXHIBIT OF SAID SURVEY AS FAR AS IT IS KNOWN TO ME.

SURVEY CALLED FOR BY CHARLES WILLIAMS.

SIGNED ON THIS 1st DAY OF APRIL, 1974.

Melvin Ferguson
MELVIN FERGUSON
COUNTY ENGINEER
McPHERSON CO., KANSAS

