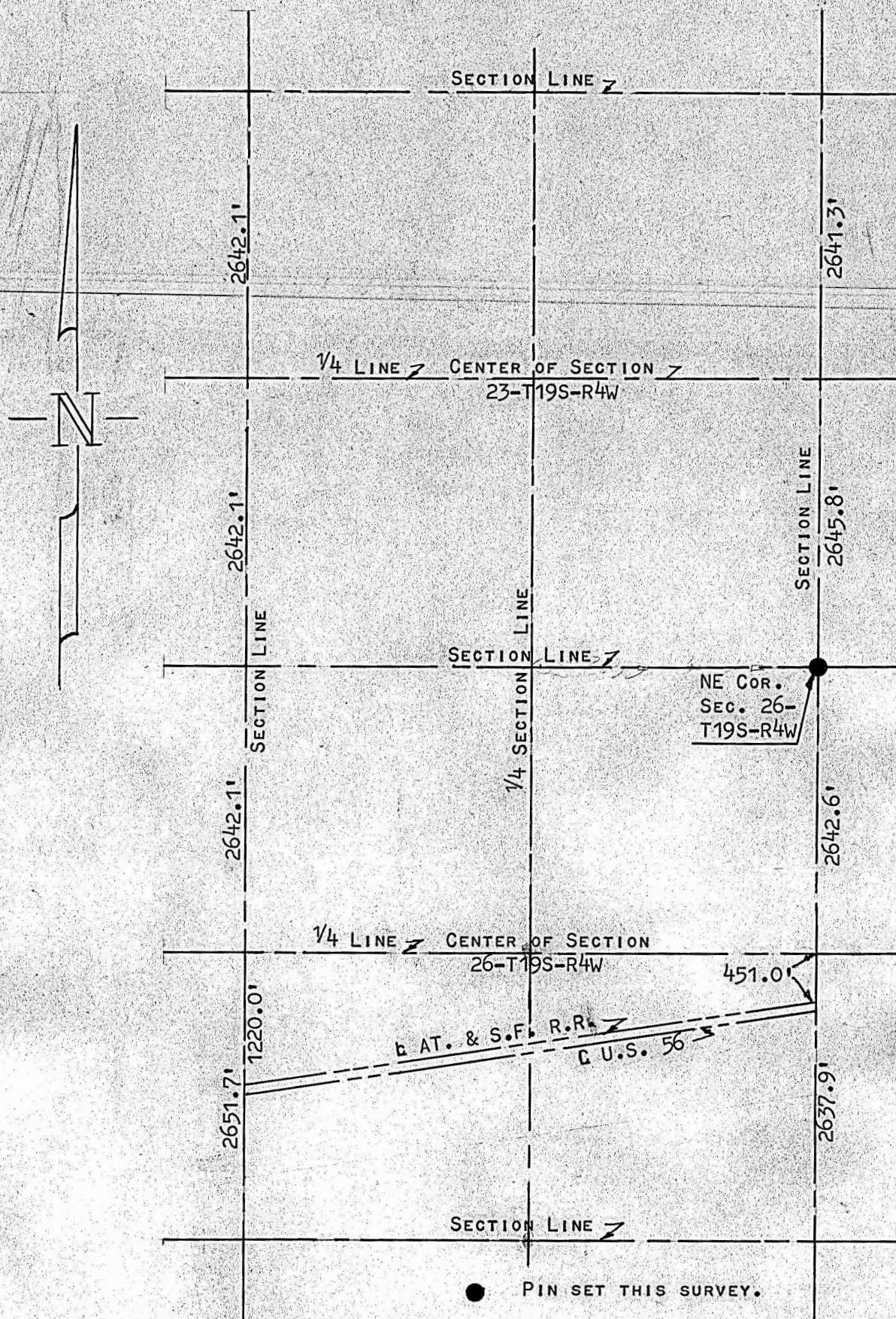


A SURVEY OF THE NORTH LINE OF THE  
NE<sup>1</sup>/<sub>4</sub> OF SEC. 26, T19S, R4W



STATE OF KANSAS ) SS  
COUNTY OF McPHERSON)

I, FRANCIS D. WAGNER, COUNTY ENGINEER OF  
McPHERSON COUNTY, KANSAS DO HEREBY CERTIFY THAT I  
DID CAUSE TO BE DONE ON THE 31ST DAY OF AUGUST,  
1961 A SURVEY OF THE NORTH LINE OF THE NE<sup>1</sup>/<sub>4</sub> OF  
SECTION 26, T19S, R4W OF THE 6TH P.M. AND THAT THE  
ACCOMPANYING PLAT IS A TRUE EXHIBIT OF SAID SURVEY.



*Francis D. Wagner*  
FRANCIS D. WAGNER  
COUNTY ENGINEER  
McPHERSON COUNTY

5 SEPTEMBER, 1961

Eck

MICROFILM

MICROFILM